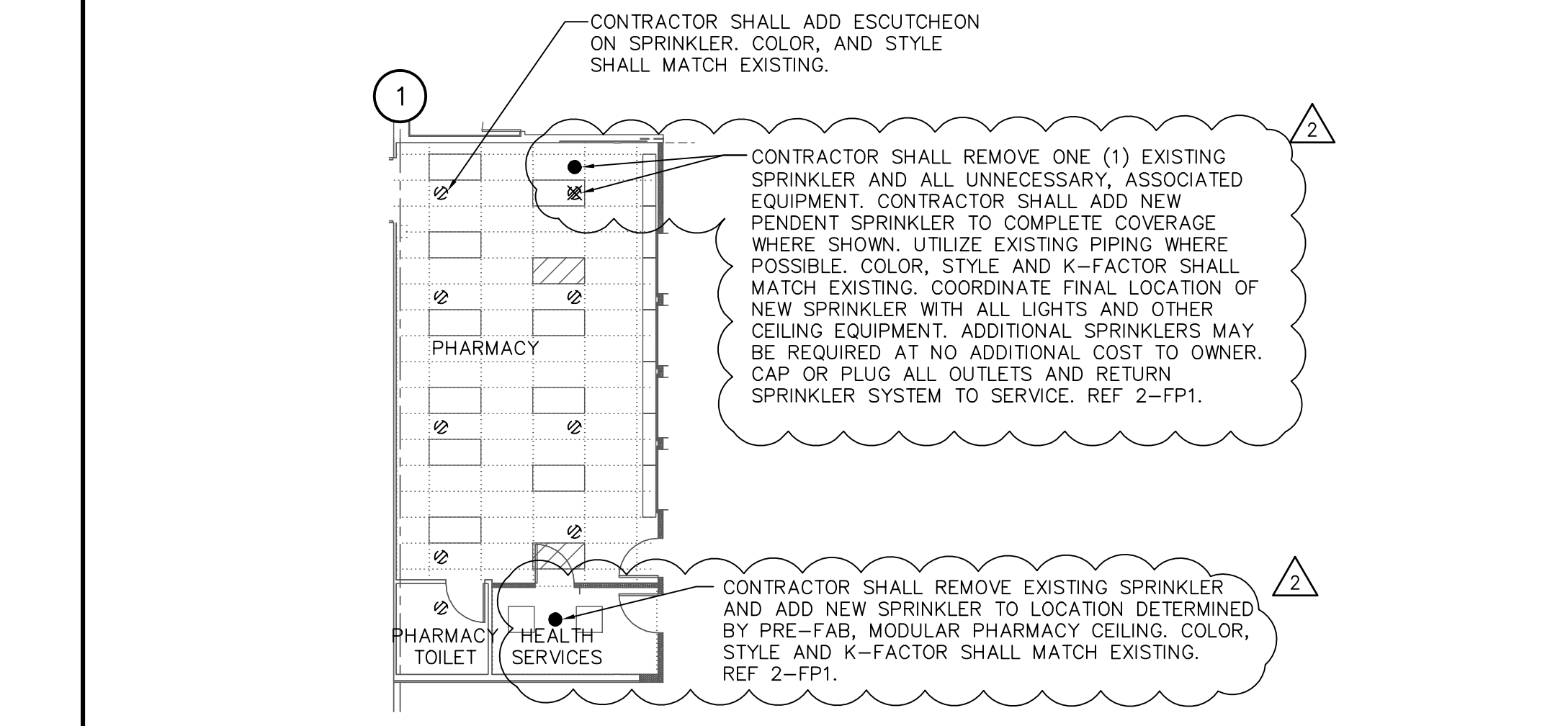
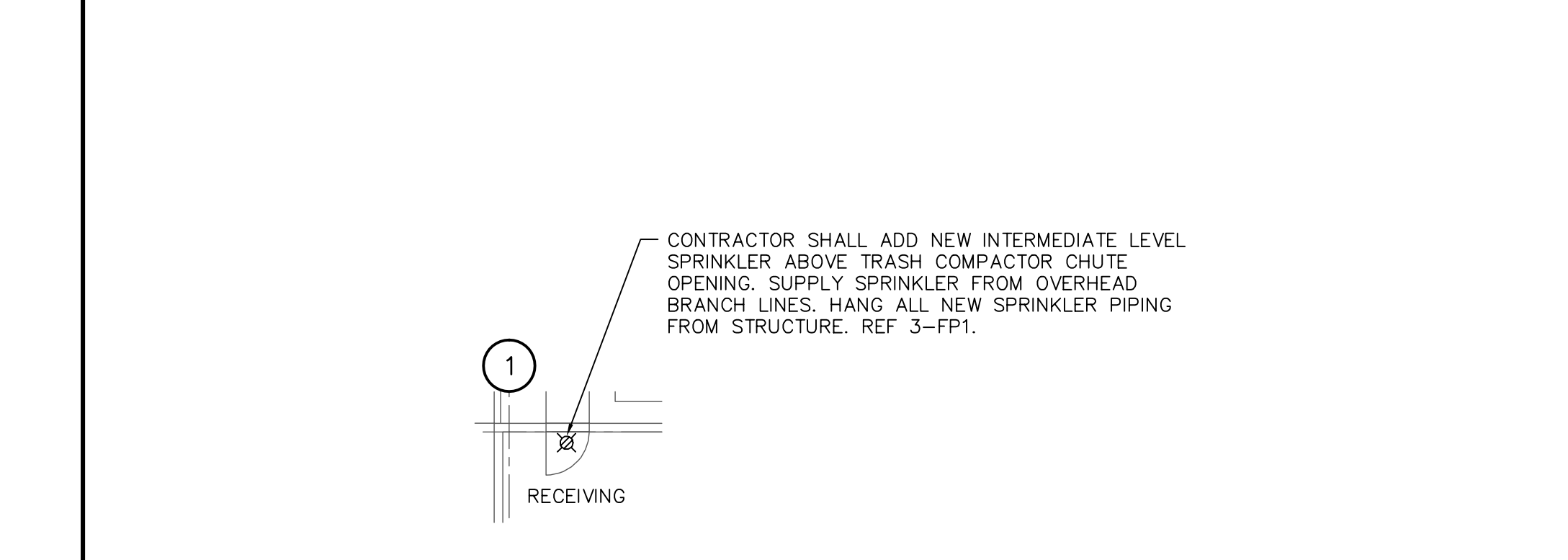


7 SITE TO STORE FIRE PROTECTION PLAN
3/32" = 1'-0"



6 PHARMACY FIRE PROTECTION PLAN
3/32" = 1'-0"

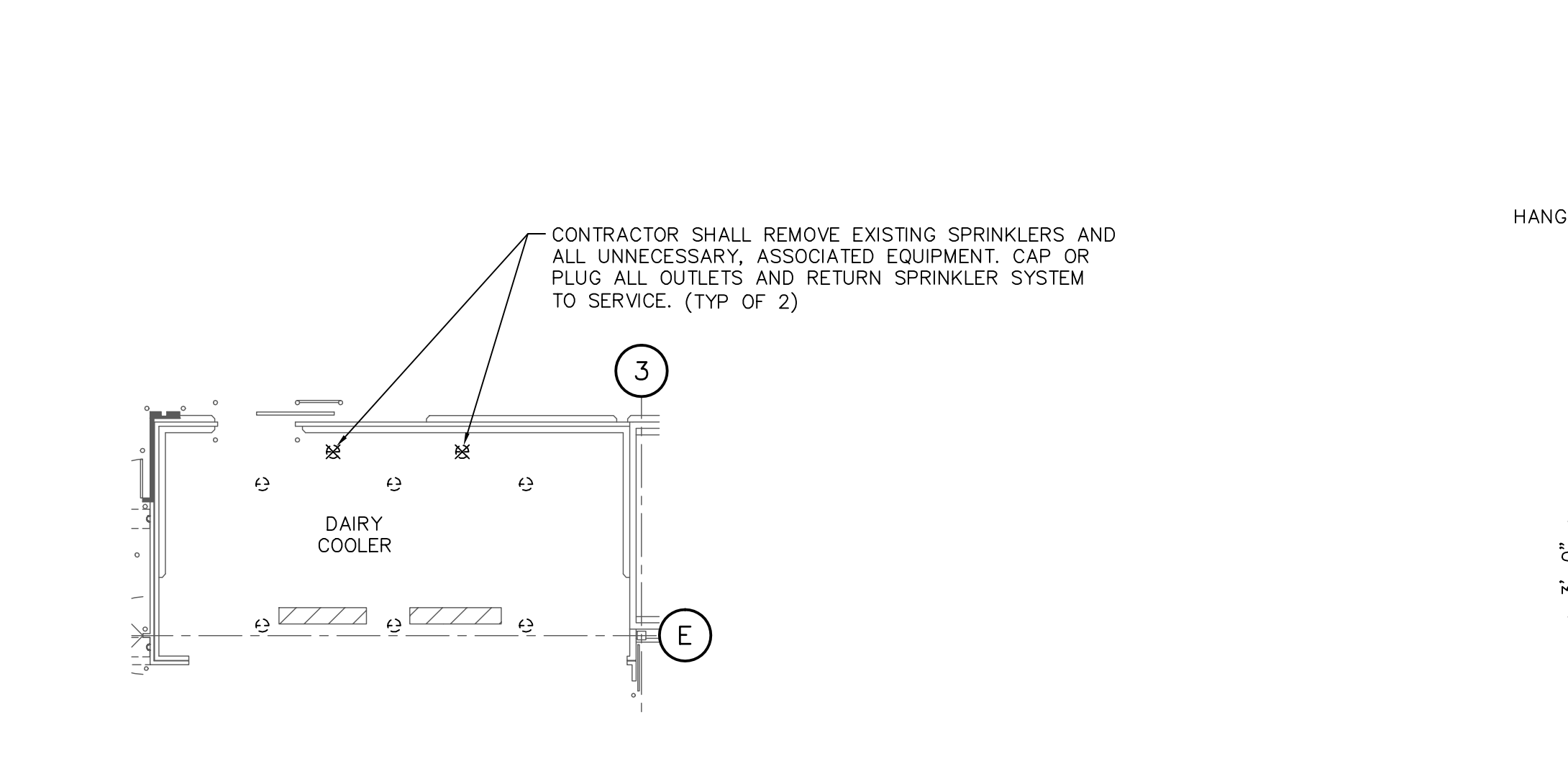


5 RECEIVING FIRE PROTECTION PLAN
3/32" = 1'-0"

EXISTING PROTECTION CRITERIA				
OCCUPANCY CLASSIFICATION	DENSITY	HOSE ALLOWANCE (GPM)	MAXIMUM SPRINKLER SPACING (SQ FT)	DESIGN BASIS
SALES FLOOR (MISCELLANEOUS STORAGE)	0.20/1500 SQ FT	250	130	EXISTING DESIGN DENSITY
COOLERS/FREEZERS (MISCELLANEOUS STORAGE)	MINIMUM 0.20/1500 SQ FT OR ENTIRE AREA	250	130	EXISTING DESIGN DENSITY

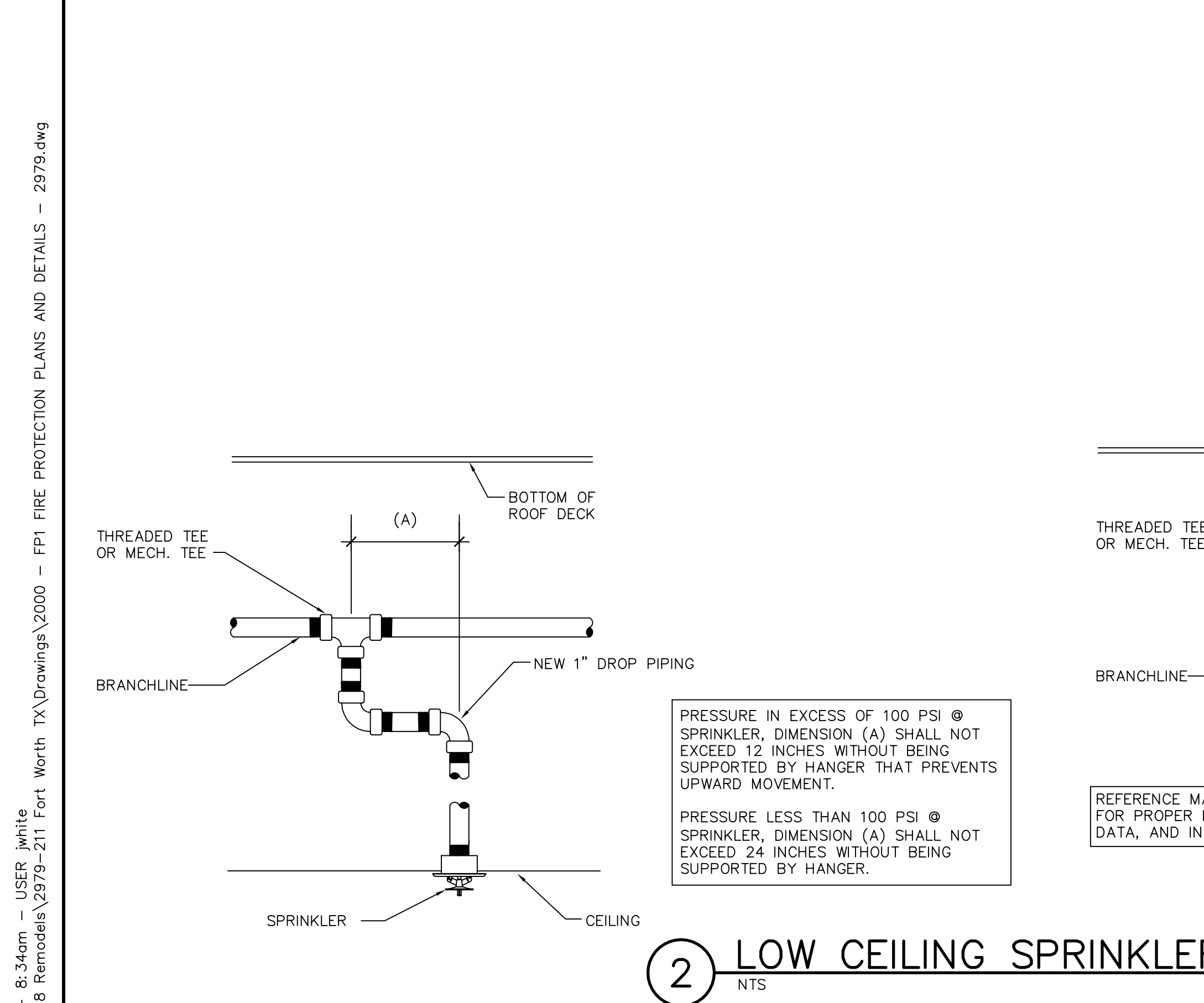
FIRE SPRINKLER SYMBOL LEGEND											
TOTAL NEW SPRINKLERS REQUIRED					CONTRACTOR-PROVIDED FIRE SPRINKLERS					TOTAL	
SYMBOL	DESCRIPTION	SYMBOL	SIZE	MFR	MAKE	S.I.N.	FINISH	STYLE	TEMP	K-FACTOR	(ENTIRE BUILDING)
---	EXISTING BRANCH LINE	⊗	1/2"	TYCO	TY-B	TY3251	BRASS	INTER. PENDENT	200	5.6	1
---	EXISTING SPRINKLER MAIN	⊗	1/2"	TYCO	TY-FRB	TY3231	WHITE	PENDENT 401 ESC	155	5.6	3
---	NEW SPRINKLER BRANCH LINE	⊗	1/2"	TYCO	TY-FRB	TY3231	WHITE	RECESSED STYLE 13	155	5.6	2
---	NEW SPRINKLER MAIN	⊗	1/2"	TYCO	TY-FRB	TY3231	WHITE	RECESSED STYLE 13	155	5.6	2
⊗	HYDRAULIC REFERENCE POINT: REFER TO DESIGN DRAWINGS FOR EXACT LOCATIONS	---	---	---	---	---	---	---	---	---	---
⊗	EXISTING SPRINKLER RISER	⊗	1"	---	---	---	CHROME	CONCEAL	200	5.6	---
⊗	EXISTING CAP	⊗	1/2"	---	---	---	WHITE	RECESSED STYLE 10	155	5.6	---
⊗	NEW CAP	⊗	1/2"	---	---	---	WHITE	PENDENT 401 ESC	155	5.6	---
⊗	NEW TEE	⊗	1/2"	---	---	---	---	---	---	---	---
⊗	NEW ELL	⊗	1/2"	---	---	---	---	---	---	---	---
⊗	NEW INSPECTOR'S TEST/AUXILIARY DRAIN	⊗	1"	---	---	---	CHROME	CONCEAL	200	5.6	---
⊗	NEW BRANCH LINE TO BE INSTALLED	⊗	1/2"	---	---	---	WHITE	PENDENT	155	5.6	---
⊗	NEW OUTLET WITH ARM-OVER	⊗	1/2"	---	---	---	WHITE	RECESSED STYLE 10	155	5.6	---
⊗	NEW PIPE "UP" OR "DN"	⊗	1/2"	---	---	---	---	---	---	---	---
⊗	LONGITUDINAL SEISMIC BRACING	⊗	---	---	---	---	---	---	---	---	---
⊗	LATERAL SEISMIC BRACING	⊗	---	---	---	---	---	---	---	---	---
⊗	4-WAY SEISMIC BRACING	⊗	---	---	---	---	---	---	---	---	---
⊗	HANGER	⊗	---	---	---	---	---	---	---	---	---

ABBREVIATIONS			
TYP	TYPICAL	ELL	ELBOW
REF	REFER	OMU	CONCRETE MASONRY UNITS
EVA	EVAPORATOR	GPM	GALLONS PER MINUTE
AHU	AIR HANDLING UNIT	PSI	POUNDS PER SQUARE INCH
RTU	ROOF TOP UNIT	MIN	MINIMUM
RC	REDUCING COUPLING	MAX	MAXIMUM
BOR	BASE OF RISER	MECH	MECHANICAL
FLG	FLANGE OR FLANGED	HP	HORSE POWER
GRV	GROOVED	CONT'D	CONTINUED

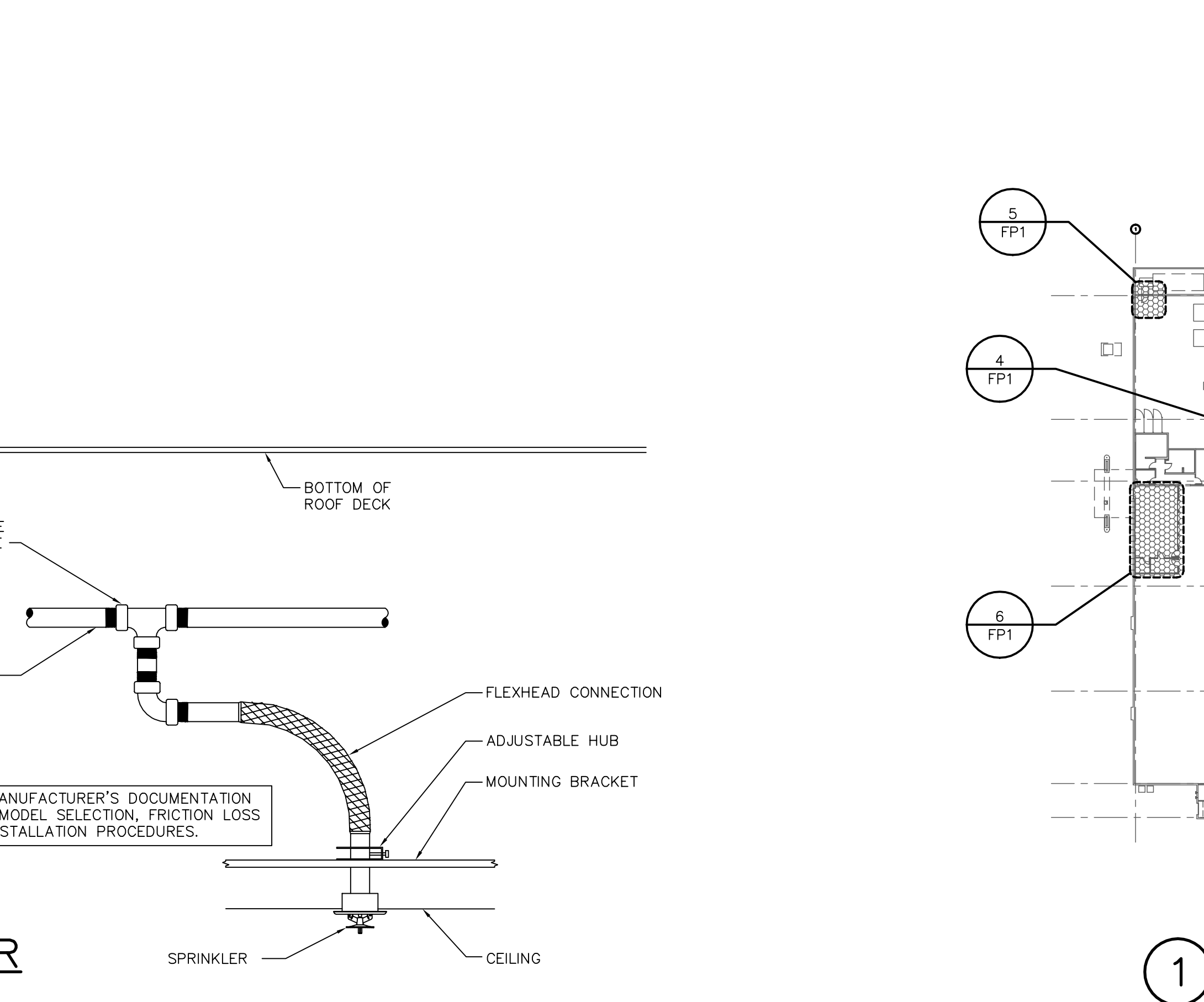


4 DAIRY COOLER FIRE PROTECTION PLAN
3/32" = 1'-0"

3 COMPACTOR SPRINKLER
N1S 10.30.07 F33-1



2 LOW CEILING SPRINKLER
N1S



1 FIRE PROTECTION PLAN
1" = 50'-0"

CONTACT INFORMATION	GENERAL PIPING AND DEMOLITION NOTES	GENERAL NOTES	GENERAL NOTES CONT.
DOCUMENTS INCLUDE JURISDICTIONAL REQUIREMENTS PROVIDED BY THE FOLLOWING CONTACTS: FIRE SPRINKLER REVIEWING AUTHORITY: CHP PARSON, FIRE MARSHAL (817) 392-6848	1. UNLESS NOTED OTHERWISE, DISCONNECT AND REMOVE ALL EXISTING FIRE PROTECTION COMPONENTS NOT INTENDED TO BE REUSED. 2. REMOVE ALL DEMOLITION MATERIALS AND DEBRIS TO AN APPROVED DUMPING SITE AND CLEAN ALL FIRE PROTECTION WORK PRIOR TO PROJECT COMPLETION. 3. PERFORM ALL WORK ACCORDING TO THE PROJECT PHASING SCHEDULE INFORMATION FOR THIS PROJECT. PROVIDE ALL NECESSARY FIRE PROTECTION WORK, TEMPORARY AND/OR OTHERWISE, AND USE WHATEVER MEANS NECESSARY, TO CONFORM TO THE REQUIRED CONSTRUCTION PHASING OF THE PROJECT. 4. CONTRACTOR IS RESPONSIBLE FOR REPAIRING OR REPLACING ITEMS DAMAGED DURING DEMOLITION AND CONSTRUCTION. 5. CONTRACTOR SHALL PATCH ALL HOLES TO MATCH ADJACENT SURFACES LEFT UNUSED AFTER EXISTING SPRINKLER PIPING OR HANGER ASSEMBLIES, ALARMS, DRAINS, TEST POINTS, ETC. WITH ARCHITECTURAL, STRUCTURAL, MECHANICAL, AND ELECTRICAL COMPONENTS. OBSTRUCTIONS TO ELECTRICAL DISCHARGE MUST BE CONSIDERED DURING SHOP DRAWING PRODUCTION AND INSTALLATION; ADDITIONAL SPRINKLERS OR DIFFERENT PIPE ROUTING MAY BE REQUIRED AT NO ADDITIONAL COST TO OWNER. REFER TO SPECIFICATIONS FOR ADDITIONAL REQUIREMENTS. 6. CONTRACTOR SHALL PATCH ALL HOLES TO MATCH ADJACENT SURFACES LEFT UNUSED AFTER EXISTING SPRINKLER PIPING OR HANGER ASSEMBLIES, ALARMS, DRAINS, TEST POINTS, ETC. WITH ARCHITECTURAL, STRUCTURAL, MECHANICAL, AND ELECTRICAL COMPONENTS. OBSTRUCTIONS TO ELECTRICAL DISCHARGE MUST BE CONSIDERED DURING SHOP DRAWING PRODUCTION AND INSTALLATION; ADDITIONAL SPRINKLERS OR DIFFERENT PIPE ROUTING MAY BE REQUIRED AT NO ADDITIONAL COST TO OWNER. REFER TO SPECIFICATIONS FOR ADDITIONAL REQUIREMENTS. 7. CONTRACTOR IS RESPONSIBLE FOR PROVIDING AND MAINTAINING FIRE DEPARTMENT ACCESS ROADS THROUGHOUT THE PROJECT. 8. SPRINKLER SYSTEMS NOT ASSOCIATED WITH THE DEMOLITION SHALL BE LEFT IN SERVICE. 9. ALL WORK SHALL BE PERFORMED SO AS TO NOT INTERRUPT SERVICE. THE CONTRACTOR SHALL PROPERLY NOTIFY THE LANDLORD, THE LESSOR AND THE ADJACENT TENANTS A MINIMUM OF 48 HOURS IN ADVANCE BEFORE PROCEEDING WITH THIS WORK. ALL WORK SHALL BE SCHEDULED IN ADVANCE. 10. ONLY THE PORTIONS OF THE BUILDING AFFECTED BY THE SCOPE OF WORK FOR THIS PROJECT HAVE BEEN SHOWN. INFORMATION SHOWN AS EXISTING TO REMAIN IS NOT BEING MODIFIED AS A PART OF THIS PROJECT. SPRINKLER CONTRACTOR SHALL SUBMIT AND RECEIVE APPROVAL OF ALL FIRE SPRINKLER SHOP DRAWINGS, HYDRAULIC CALCULATION AND MATERIAL DATA SUBMITTALS BY CYNERGY PRIOR TO ANY FABRICATION OR INSTALLATION	1. THE DESIGN SHOWN ON THESE CONTRACT DOCUMENTS IS TO PROVIDE GUIDANCE FOR BIDDING AND TO OBTAIN APPROVAL FROM THE AUTHORITY HAVING JURISDICTION. THE SPRINKLER CONTRACTOR SHALL SUBMIT COMPLETE FIRE SPRINKLER SHOP DRAWINGS AS REQUIRED BY CONTRACT DOCUMENTS TO THE OWNERS DESIGNATED REVIEWER. BASE DESIGN UPON THESE DRAWINGS AND AS REQUIRED BY THE SPECIFICATIONS. SHOP DRAWINGS SHALL INCLUDE ELEVATIONS, HANGER LOCATIONS, PIPE LENGTHS, DIMENSIONS, FABRICATIONS METHODS, MATERIAL DATA SUBMITTALS, AND ADDITIONAL INFORMATION NECESSARY TO CLARIFY THE INTENT OF INSTALLATION. CONTRACTOR SHALL PROVIDE PIPE SIZE, SPRINKLER SPACING, AND SYSTEM CONFIGURATION AS SHOWN. ALTERNATES MUST BE APPROVED BY WRITING VIA THE RFI PROCESS BY THE FIRE PROTECTION ENGINEER OF RECORD DOCUMENTS PRIOR TO BID. 2. COORDINATE LOCATIONS OF FIRE PROTECTION HANGER ASSEMBLIES, ALARMS, DRAINS, TEST POINTS, ETC. WITH ARCHITECTURAL, STRUCTURAL, MECHANICAL, AND ELECTRICAL COMPONENTS. OBSTRUCTIONS TO ELECTRICAL DISCHARGE MUST BE CONSIDERED DURING SHOP DRAWING PRODUCTION AND INSTALLATION; ADDITIONAL SPRINKLERS OR DIFFERENT PIPE ROUTING MAY BE REQUIRED AT NO ADDITIONAL COST TO OWNER. REFER TO SPECIFICATIONS FOR ADDITIONAL REQUIREMENTS. 3. THE SPRINKLER CONTRACTOR MUST VISIT THE BUILDING SITE TO DETERMINE THE FULL EXTENT OF THE EXISTING FIRE PROTECTION WORK AND EXISTING CONDITIONS. BECOME TOTALLY FAMILIAR WITH THE DISCONNECTS, REMOVALS, RELOCATIONS AND/OR APPROVALS. SPRINKLER CONTRACTOR SHALL BE RESPONSIBLE FOR OBTAINING THE NECESSARY APPROVALS, THE SPRINKLER CONTRACTOR MUST MAKE NOTE OF ANY FIELD OR COORDINATION CHANGES ON THE INSTALLATION DRAWINGS, AND THEN MUST PROVIDE A SET OF "RED-LINED" AS-BUILT DRAWINGS TO THE FIRE PROTECTION ENGINEER OF RECORD ONCE COMPLETE. 4. SUBMIT A REQUEST FOR INFORMATION FOR ANY QUESTIONS REGARDING THE FIRE PROTECTION DOCUMENTS TO THE ARCHITECT AND ENGINEER OF RECORD. 5. NEUTRALIZATION WALLS, IF PROVIDED, ARE SHOWN ON THE ARCHITECTURAL DRAWINGS. REFER TO MECHANICAL DRAWINGS FOR NEUTRALIZATION WALL PENETRATION DETAIL. 6. PENETRATIONS OF "RATED ASSEMBLIES" SHALL BE FIRE STOPPED WITH AN APPROVED MATERIAL PER METHODS REQUIRED ALLOWED BY THE FIRE PROTECTION ENGINEER OF RECORD AND THE AUTHORITY HAVING JURISDICTION. 7. THE FIRE PROTECTION ENGINEER OF RECORD SHALL NOT BE RESPONSIBLE FOR THE CONTRACTOR'S FAILURE TO CARRY OUT THE CONSTRUCTION WORK IN ACCORDANCE WITH THE CONTRACT DOCUMENTS, NOR SHALL THEY BE REQUIRED TO SUPERVISE THE CONDUCT OF THE WORK. THE CONSTRUCTION PROCEDURES FOLLOWED BY THE CONTRACTOR, SUBCONTRACTORS, THEIR RESPECTIVE EMPLOYEES OR ANY OTHER PERSON AT THE JOB SITE OTHER THAN THAT OF THE ENGINEERING FIRM'S EMPLOYEES. 8. THE SPRINKLER CONTRACTOR MUST REVIEW ALL CONSTRUCTION DOCUMENTS PRIOR TO BID. SHOULD MODIFICATIONS TO THESE PLANS BECOME NECESSARY TO PROPERLY COORDINATE THE SYSTEM WITH ALL OTHER TRADES, IT WILL BE THE CONTRACTOR'S RESPONSIBILITY TO OBTAIN APPROVAL OF THE CHANGES FROM BOTH THE AUTHORITY HAVING JURISDICTION AND THE FIRE PROTECTION ENGINEER OF RECORD. IN ADDITION TO OBTAINING THE NECESSARY APPROVALS, THE SPRINKLER CONTRACTOR MUST MAKE NOTE OF ANY FIELD OR COORDINATION CHANGES ON THE INSTALLATION DRAWINGS, AND THEN MUST PROVIDE A SET OF "RED-LINED" AS-BUILT DRAWINGS TO THE FIRE PROTECTION ENGINEER OF RECORD ONCE COMPLETE. 9. THE SPRINKLER CONTRACTOR MUST VERIFY ALL DROP DOWN LOCATIONS AT EXTERIOR WALLS WITH THE GENERAL CONTRACTOR AND/OR THE WALMART CONSTRUCTION MANAGER PRIOR TO INSTALLATION. 10. ALL PIPING MUST BE COORDINATED AROUND FRAMING MEMBERS AND PROPERLY INSTALLED ABOVE THE BOTTOM CHORD OF THE BAR JOIST. 11. ALL NEW SPRINKLER PIPING ADDED TO ANY PORTION OF THE EXISTING SPRINKLER SYSTEMS THAT IS VISIBLE TO THE PUBLIC MUST BE PAINTED THE SAME COLOR AS THE ADJACENT PIPING IN THAT AREA.	12. THE SPRINKLER CONTRACTOR SHALL ROUTE PIPING AROUND ALL OBSTRUCTIONS AND PROVIDE SPRINKLER CLEARANCES FROM OBSTRUCTIONS, AS DETAILED IN THE AHJ APPROVED EDITION OF NFPA 13 AS PART OF THE FIELD COORDINATION AT NO ADDITIONAL COST TO OWNER. REFER TO ALL FIRE PROTECTION DETAILS AND CONSTRUCTION DOCUMENTS FOR ALL INFORMATION. 13. ALL SPRINKLER DEFLECTOR DISTANCE REQUIREMENTS SHALL BE IN ACCORDANCE AS DETAILED IN THE AHJ APPROVED EDITION OF NFPA 13 14. ALL PIPING PASSING THROUGH CMU WALLS SHALL BE INSTALLED WITH ONE INCH CLEARANCE ON ALL SIDES. (CORE DIAMETER EQUAL TO PIPE + 2"). ALL CORES SHALL BE COORDINATED WITH STRUCTURAL REINFORCING. THE SPRINKLER CONTRACTOR IS RESPONSIBLE FOR PROVIDING ALL CORING WITH PROPER CLEARANCE AT ALL CMU WALLS. GENERAL CONTRACTOR SHALL BE RESPONSIBLE FOR PROVIDING A TWO INCH CLEARANCE AROUND ALL PIPING PASSING THROUGH CONCRETE SLABS. THE SPRINKLER CONTRACTOR SHALL FILL ALL CLEARANCES WITH APPROVED MASTIC. 15. PENETRATIONS OF ANY FIRE RATED ASSEMBLIES SHALL BE FIRE STOPPED WITH APPROVED MATERIALS PER METHODS DESCRIBED BY THE UL FIRE RESISTANCE DIRECTORY. 16. PROVIDE FLUSHING CONNECTIONS IN ACCORDANCE WITH THE STANDARDS OUTLINED IN NFPA 13. 17. PROVIDE ALL NECESSARY OFFSETS, RISE OR DROPS IN PIPING AND AUXILIARY DRAINS AS REQUIRED BY BUILDING CONDITIONS. 18. EXAMINE THE JOB CONDITIONS AND VERIFY ALL MEASUREMENTS, DISTANCES, ELEVATIONS, CLEARANCES, ETC. 19. ARCHITECTURAL AND ELECTRICAL BACKGROUND INFORMATION IS SHOWN FOR COORDINATION PURPOSES ONLY. REFER TO THE CONTRACT DOCUMENTS FOR LOCATIONS, SIZES AND QUANTITIES OF OTHER TRADE WORK. 20. ALL SPRINKLER SPACING SHALL ADHERE TO THE CONTRACT DOCUMENTS AS WELL AS THE ADOPTED EDITION OF NFPA 13. 21. INTERFACE SPRINKLER SYSTEM WITH FIRE PROTECTION SUPERVISOR SYSTEM. 22. ALL MATERIALS SHALL BE UL LISTED AND FM APPROVED. SPRINKLER PIPE SHALL BE MANUFACTURED TO STANDARDS RECOGNIZED BY NFPA 13. THREADED PIPE SHALL HAVE A CORROSION RESISTANCE RATING OF 1.0 OR GREATER. CRIMP-TYPE COUPLINGS SHALL NOT BE USED. THREADABLE THINWALL PIPE WITH CORROSION RESISTANCE RATING OF LESS THAN 1.0 SHALL BE USED ONLY WITH ROLL GROOVE FITTINGS. 23. IF REQUIRED, PROVIDE 24 VOLT AC, ELECTRIC BELL, MODEL NO. PBA248, ELECTRIC BELL BY POTTER ELECTRIC SIGNAL OF ST. LOUIS, MISSOURI, LOCATE AS REQUIRED BY AUTHORITIES HAVING JURISDICTION. PROVIDE NEW DOUBLE POLE VANE TYPE FLOW DETECTOR, MODEL NO. VSR-F, BY POTTER ELECTRIC SIGNAL OF ST. LOUIS, MISSOURI, SET ADJUSTABLE DELAYED SIGNAL AT 30 SECONDS. MOUNT WATER FLOW INDICATORS NO HIGHER THAN 6 FEET ABOVE FINISH FLOOR. 24. ALL SPRINKLER SYSTEMS TO BE MODIFIED SHALL BE HYDROSTATICALLY TESTED PER NFPA 13 PRIOR TO SPRINKLER SYSTEM MODIFICATION AND SHALL BE RE-HYDROSTATICALLY TESTED AFTER COMPLETION OF WORK. 25. DO NOT HANG OR SUPPORT ANY LOADS OR MAKE ANY ATTACHMENTS TO THE METAL ROOF DECK OR JOIST BRIDGING. 26. SAMMY SCREWS ARE NOT PERMITTED. 27. CEILING FLANGES ARE NOT PERMITTED. 28. PROVIDE RETAINING STRAPS ON HANGERS WHERE REQUIRED. 29. HANG ALL NEW SPRINKLER BRANCH LINE PIPING IN ACCORDANCE WITH THE ADOPTED EDITION OF NFPA 13. 30. ALL NEW SPRINKLER PIPING, FITTINGS, AND HANGER ASSEMBLIES THAT ARE INSTALLED IN VIEW OF THE PUBLIC SHALL BE REQUIRED TO BE PAINTED, EITHER BY THE SPRINKLER CONTRACTOR OR THE GENERAL CONTRACTOR.

APPLICABLE CODES	
NFPA STANDARDS	EDITION
NFPA 13	2013

REFER TO SHEET C1 FOR APPLICABLE BUILDING CODES

STIPULATION FOR REUSE
THIS DRAWING WAS PREPARED FOR USE ON A SPECIFIC SITE AT THE TIME OF ITS CREATION. IT IS NOT SUITABLE FOR REUSE ON A DIFFERENT PROJECT OR FOR ANY OTHER PURPOSE. THE USER OF THIS DRAWING FOR REFERENCE OR EXAMPLE OF ANOTHER PROJECT REQUIRES THE SERVICES OF PROFESSIONAL ARCHITECTS AND ENGINEERS. REPRODUCTION OF THIS DRAWING FOR ANY PURPOSE IS NOT AUTHORIZED AND MAY BE CONTRARY TO THE LAW.

ISSUE BLOCK	
02/12/18	PERMIT/ BID
03/02/18	ADD #1
30 x 42	SHEET SET

CHECKED BY:	JAW
DRAWN BY:	JPT
PROTO:	52
PROT CYCLE:	12/29/17
DOCUMENT DATE:	02/12/18

DOCUMENTS WITHOUT SIGNATURE AND REQUIRED SEAL OF AOR/EOR ARE NOT FOR CONSTRUCTION

FIRE PROTECTION PLANS AND DETAILS

SHEET: **FP1**