



CTA ARCHITECTS ENGINEERS
 506 W. BIAL ROAD, SUITE 104
 MISSOULA, MT 59802
 Phone: (406)728-5522
 Fax: (406)728-8287

REFRIGERATION SCHEDULE RACK B

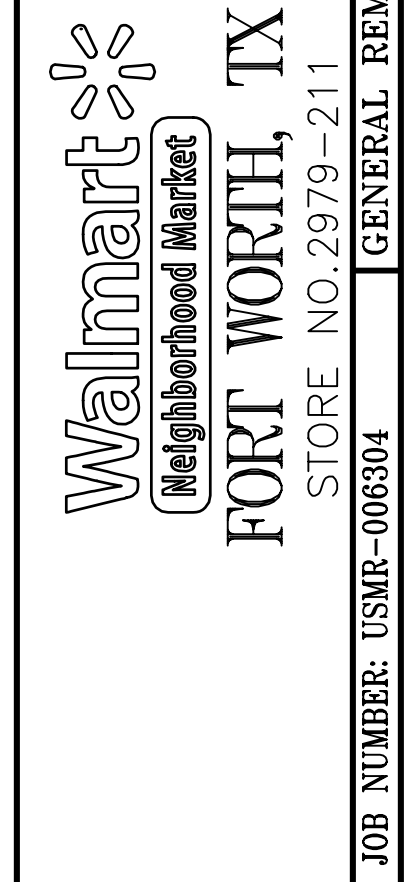
Format:	Neighborhood Mkt	Store#:	2979	System Type:	Machine Room / Central DX	Primary Refrigerant:	R427A	System Elec:	480V 3Ph 60Hz	Sat. Cond. Temp °F:	130	HR Media:	--	Subcooler Liquid Temps	SG1 Comp RGT °F:	50	DESIGN DB °F :	115	EXTERIOR DRY BULB (DB) °F :	115									
Proto Size:	Renovation	City/State:	Fort Worth, TX	Consultant:	CTA	Estimated Refrigerant Charge	--	Defrost Elec:	208V 60Hz 1 OR 3 Ph	Cond Design TD °F:	15	HR Water GPM:	--	SG2 Liquid Temp	N/A	SG2 Comp RGT °F:	N/A	DESIGN WB °F :	103.7	EXTERIOR WET BULB (WB) °F :	103.7								
ProtoCycle Date:	12/29/2017	Date Prepared:	2/12/2018	Prepared by:	Steve Pietropoli	Rack and Condenser (lbs)	--	Sys Pilot Elec:	208V 1Ph	Summer HR Avail:	--	HR Glycol Type:	--	SG3 Liquid Temp	N/A	SG3 Comp RGT °F:	N/A	DESIGN INTERIOR DRY BULB °F :	75	ELEVATION ft:	705								
Fixture and Field Piping (lbs)	--	Cond. Elec:	480V 3Ph 60Hz	Winter HR Avail:	--	HR Glycol %:	--	FIXTURE ELECTRICAL INFORMATION																					
CIRCUIT INFORMATION								FIXTURE ELECTRICAL INFORMATION								MISC INFORMATION													
Case Fixture Length / Quantity	Walk-In Box Size			Case Model	Case/Coil Manuf.	Application	Evaporator Model #	LSHX Y or N? & Model #	Evaporator Coil TXV / Distributor Nozzle	Sub-Circuit Load (MBH)	Circuit Load (MBH)	Evap SST	Case/Walk-In Air Temp	Circuit Control Valves EPR / LLSV	Defrost Type	Defrost Heaters Amps / Voltage	Fans Amps / Voltage	Lights Amps (120v)	Anti-Sweat Amps (120v)	Amps	Comments		EQUIP NUMBER						
FT/# of Doors	2 Dr/4'	3 Dr/6'	4 Dr/8'																		5 Dr/12'	L		W	H	Defrost	Amps	Voltage	Amps
MAIN CIRCUIT-SUBCIRCUITS ARE BELOW																						CIRCUIT LOAD & ELECTRICAL ARE TOTALS OF THE SUBCIRCUITS							
B1.1						BOHN	ADT260A	EGVE2C	L 1	23.55	22			SORT120	ME9	OC													
B1.2						BOHN	ADT260A	EGVE2C	L 1	23.55	22																		
B2	24 FT				DX6XN	KYSOR WARREN	M.D. Dairy				28.2	28		SORT115	ME6	OC	0.8	115/1											
B3	36 FT				DX6XN	KYSOR WARREN	M.D. Dairy				39.2	28		SORT120	ME9	OC	1.2	115/1											
B4						BOHN		WKE170B	EGVE2C	C1 1/2	28.3	22		SORT115	ME6	EL	22.6	208/1	4.4	208/1									
B5						BOHN		WK180A	EGVE3C	E 1	25.2	36		SORT112	ME6	OC	6.3	115/1											
B6						BOHN		WKE130B	EGVE1C	E 3/4	11.7	22		SORT112	ME6	EL	17.4	208/1	2.2	208/1									
B7	28 FT				DX6XN	KYSOR WARREN	M.D. Produce				32.6	28		SORT120	ME6	OC	1.0	115/1											
B8	36 FT				DX6XN	KYSOR WARREN	M.D. Produce				42.0	28		SORT120	ME9	OC	1.2	115/1											
B9	20 FT			1	1	DX6XN	KYSOR WARREN	M.D. Dairy			21.8	28	33	**SORIT12	**E5	OC	0.8	115/1			MODIFY LINE UP, REMOVE (2) 12" CASES FROM SYSTEM								
B10	32 FT				HQDL	KYSOR WARREN	M.D. Beer				42.1	30		SORT120	ME9	OC	4.8	115/1											
B11	36 FT w/ENDS			2	2	HUSSMANN	**IM	M.D. Island			44.0	25	32	**CDST-8-11	**E6	OC	2.4	115/1	3.5		NEW CASES WITH LOCAL CASE CONTROLLER AND CONTROL VALVES		RD1023.552, RD1024.552 8/25/2015						
B12	22 FT				ONSJUMEM	HILL PHOENIX	M.T. Coffin Island				45.3	22		SORT120	ME9	OC	1.4	115/1											
Suction Group #1 Required Capacity (MBH)												403.5	20	*(F) Saturated Suction Temperature															
General Notes:																													
1.) Project coordinated with Hill Phoenix.																													
2.) Circuit control valves (EPR or EEP) located at rack unless otherwise noted.																													
MODIFIED CIRCUIT/NEW CASE, VALVE, OR EVAPORATOR																													

REFRIGERATION SCHEDULE RACK C

Format:	Neighborhood Mkt	Store#:	2979	System Type:	Machine Room / Central DX	Primary Refrigerant:	R427A	System Elec:	480V 3Ph 60Hz	Sat. Cond. Temp °F:	130	HR Media:	--	Subcooler Liquid Temps	SG1 Comp RGT °F:	50	DESIGN DB °F :	115	EXTERIOR DRY BULB (DB) °F :	115									
Proto Size:	Renovation	City/State:	Fort Worth, TX	Consultant:	CTA	Estimated Refrigerant Charge	--	Defrost Elec:	208V 60Hz 1 OR 3 Ph	Cond Design TD °F:	15	HR Water GPM:	--	SG2 Liquid Temp	N/A	SG2 Comp RGT °F:	N/A	DESIGN WB °F :	103.7	EXTERIOR WET BULB (WB) °F :	103.7								
ProtoCycle Date:	12/29/2017	Date Prepared:	2/12/2018	Prepared by:	Steve Pietropoli	Rack and Condenser (lbs)	--	Sys Pilot Elec:	208V 1Ph	Summer HR Avail:	--	HR Glycol Type:	--	SG3 Liquid Temp	N/A	SG3 Comp RGT °F:	N/A	DESIGN INTERIOR RH % :	55%	ELEVATION ft:	705								
Fixture and Field Piping (lbs)	--	Cond. Elec:	480V 3Ph 60Hz	Winter HR Avail:	--	HR Glycol %:	--	FIXTURE ELECTRICAL INFORMATION																					
CIRCUIT INFORMATION								FIXTURE ELECTRICAL INFORMATION								MISC INFORMATION													
Case Fixture Length / Quantity	Walk-In Box Size			Case Model	Case/Coil Manuf.	Application	Evaporator Model #	LSHX Y or N? & Model #	Evaporator Coil TXV / Distributor Nozzle	Sub-Circuit Load (MBH)	Circuit Load (MBH)	Evap SST	Case/Walk-In Air Temp	Circuit Control Valves EPR / LLSV	Defrost Type	Defrost Heaters Amps / Voltage	Fans Amps / Voltage	Lights Amps (120v)	Anti-Sweat Amps (120v)	Amps	Comments		EQUIP NUMBER						
FT/# of Doors	2 Dr/4'	3 Dr/6'	4 Dr/8'																		5 Dr/12'	L		W	H	Defrost	Amps	Voltage	Amps
*C1	24 FT				DX6XN	KYSOR WARREN	M.D. Dairy				8.0	28	33	**SORIT12	ME6	OC	0.8	115/1			RELOCATE CASES AS SHOWN ON R1								
*C2	24 FT				DX6XN	KYSOR WARREN	M.D. Dairy				8.0	28	33	**SORIT12	ME6	OC	0.8	115/1			RELOCATE CASES AS SHOWN ON R1								
C3	8 FT				PONJM	HUSSMANN	Service Deli				3.3	20		SORT112	E3	OC	1.0	115/1											
C4	8 FT				SVHSS	HUSSMANN	M.D. Seafood				3.4	22		SORT112	ME6	OC	0.5	115/1											
C5						BOHN		WK180A	EGVE1 1/2C	E 3/4	16.0	27		SORT112	ME6	OC	6.3	115/1											
C6						BOHN		WK100A	EGVE34C	L 1/2	10.1	27		SORT112	ME6	OC	4.2	115/1											
*C7	36 FT w/ENDS			2	2	**IM	HUSSMANN	M.D. Island			44.0	25	32	**CDST-8-11	**E6	OC	2.4	115/1	3.5		NEW CASES WITH LOCAL CASE CONTROLLER AND CONTROL VALVES		RD1023.552, RD1024.552 8/25/2015						
*C8	36 FT w/ENDS			2	2	**IM	HUSSMANN	M.D. Island			44.0	25	32	**CDST-8-11	**E6	OC	2.4	115/1	3.5		NEW CASES WITH LOCAL CASE CONTROLLER AND CONTROL VALVES		RD1023.552, RD1024.552 8/25/2015						
*C9	38 FT			1	2	DX6XN	KYSOR WARREN	M.D. Dairy			18.8	28		**SORIT12	**E6	OC	1.0	115/1			RELOCATE CASES AS SHOWN ON R1								
C10						BOHN		WKE130B	EGVE1C	E 3/4	12.2	22		SORT112	ME6	EL	17.4	208/1	2.2	208/1									
*C11	48 FT				MX	HUSSMANN	M.D. Meat				60.4	28		**SORIT15	**E9	OC	9.2	115/1	13.8		RELOCATE CASES AS SHOWN ON R1								
C12	6 FT				CZX-LOGEP	HUSSMANN	M.D. Deli				3.7	28		SORT112	ME6	OC	0.2	115/1											
C13	12 FT				EZY	HUSSMANN	M.D. Self Service				10.8	21		SORT112	E3	OC	0.7	120/1											
Suction Group #1 Required Capacity (MBH)												233.9	18	*(F) Saturated Suction Temperature															
General Notes:																													
1.) Project coordinated with Hill Phoenix.																													
2.) Circuit control valves (EPR or EEP) located at rack unless otherwise noted.																													
MODIFIED CIRCUIT/NEW CASE, VALVE, OR EVAPORATOR																													

STIPULATION FOR REUSE

THIS DRAWING WAS PREPARED FOR USE ON A SPECIFIC SITE AT FORT WORTH, TX. IT IS NOT SUITABLE FOR REUSE ON A DIFFERENT PROJECT SITE OR AT A LATER TIME. THE USER OF THIS DRAWING FOR REFERENCE OR REUSE ON ANOTHER PROJECT REQUIRES THE SERVICES OF PROFESSIONAL ARCHITECTS AND ENGINEERS. THE REPRODUCTION OF THIS DRAWING FOR REUSE ON ANOTHER PROJECT IS NOT AUTHORIZED AND MAY BE CONTRARY TO THE LAW.



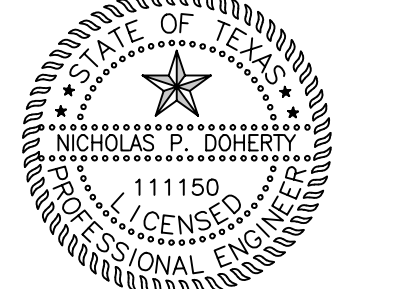
ISSUE BLOCK

DATE	DESCRIPTION	BY
02/12/18	PERMIT/ BID	JR

CHECKED BY: JR
 DRAWN BY: SP
 PROTO: 52
 PROTO CYCLE: 12/29/17
 DOCUMENT DATE: 02/12/18

DOCUMENTS WITHOUT SEAL OF AOR/EOR ARE NOT FOR CONSTRUCTION

REGISTERED TO CONDUCT BUSINESS: 800250643
 REGISTERED AS ENGINEERING FIRM: F-2217
 REGISTERED AS: CTA INC.
 DBA: CTA ARCHITECTS ENGINEERS



February 07, 2018
 License #111150

REFRIGERATION SCHEDULES

SHEET: R2

PROJECT COORDINATED WITH REFRIGERATION VENDOR (OEM) AS INDICATED ON REFRIGERATION SCHEDULE(S).

EXISTING CONDITIONS WERE TAKEN FROM ORIGINAL DRAWINGS AND MAY NOT REFLECT EXACT "AS-BUILT" CONDITIONS. CONTRACTOR SHALL VERIFY ALL EXISTING CONDITIONS PRIOR TO SUBMITTING FINAL BIDS. CONTRACTOR SHALL CAREFULLY COORDINATE NEW WORK AND DEMOLITION WITH ALL OTHER DISCIPLINES AND EXISTING CONDITIONS.

EACH SUBCONTRACTOR IS RESPONSIBLE FOR HAVING A THOROUGH KNOWLEDGE OF ALL DRAWINGS AND SPECIFICATIONS IN THEIR RELATED FIELD. THE FAILURE TO ACQUAINT THEMSELVES WITH THIS KNOWLEDGE DOES NOT RELIEVE THE RESPONSIBILITY OF PERFORMING THE WORK PROPERLY. NO ADDITIONAL COMPENSATION SHALL BE ALLOWED BECAUSE OF CONDITIONS THAT OCCUR DUE TO FAILURE TO FAMILIARIZE WORKERS WITH THIS KNOWLEDGE.