

STIPULATION FOR REUSE
THIS DRAWING WAS PREPARED FOR USE ON A SPECIFIC SITE AT FORT WORTH, TX. CONTINGUOUSLY WITH ITS ISSUE DATE ON 02/12/18, AND IS NOT SUITABLE FOR USE ON A LATER DATE. THE USER OF THIS DRAWING FOR REFERENCE OR EXAMPLE ON ANOTHER PROJECT REQUIRES THE SERVICES OF PROPERLY LICENSED ARCHITECTS AND ENGINEERS. RESPONSIBILITY OF THIS PROJECT IS NOT AUTHORIZED AND MAY BE CONTRARY TO THE LAW.

Wal-Mart
Neighborhood Market
FORT WORTH, TX
STORE NO. 2979-211
JOB NUMBER: USMR-006304 GENERAL REMODEL

ISSUE BLOCK

02/12/18	PERM17 BID
03/02/18	ADD #1

30 X 42 SHEET SET

CHECKED BY: BLW
DRAWN BY: NSW
PROTO: 52
PROTO CYCLE: 12/29/17
DOCUMENT DATE: 02/12/18

DOCUMENTS WITHOUT SIGNATURE AND REQUIRED SEAL OF AOR/EOR ARE NOT FOR CONSTRUCTION

ERIC KEESTERSON, P.E.
ENGINEER OF RECORD
CA # T-2220

ENLARGED POWER PLANS
SHEET: E2

ELECTRICAL KEYNOTES

- 16.032 CONNECT CIRCUIT TO POWER POLE WHIP WIRED TO ORANGE TWIST-LOCK RECEPTABLES.
- 16.299 CONNECT EMS CONTROL TRANSFORMER(S) AND/OR ELDP(S) TO NEAREST 120V RECEPTACLE CIRCUIT WITH (2)#12, (1)#10G. COORDINATE INSTALLATION AND PROCUREMENT WITH EMS CONTRACTOR. REFER TO EMS PLAN INDICATED.
- 16.410A COUNTER MOUNTED DEVICES: ROUTE BRANCH CIRCUITRY AND VOICE/DATA CABLING THROUGH OWNER FURNISHED BLANK POWER POLE. ROUTE FLEXIBLE METAL CONDUITS ALONG BACK WALL OF CABINET MOUNT DEVICES WITHIN CABINET AT +8". EACH DATA BOX IS TO HAVE A SEPARATE CONDUIT ROUTED TO POWER POLE. VERIFY ALL DEVICE LOCATIONS WITH STORE PLANNING SETUP SUPERVISOR PRIOR TO ROUGH-IN.
- 16.451 PROVIDE EMT WITH PROPERLY INSTALLED COMPRESSION OR SET-SCREW TYPE FITTINGS AND AN INSULATED GROUND CONDUCTOR FOR ALL RACEWAYS SERVING THIS ROOM TO COMPLY WITH NEC, HEALTH CARE FACILITIES.
- 16.470 FURNISH AND INSTALL NEW 20 AMP, 120 VOLT CIRCUIT(S). FEED FROM PANELBOARD AS INDICATED. PROVIDE 20A-1P CIRCUIT BREAKER IF NEEDED. EC SHALL MATCH TYPE AND AIC RATINGS OF EXISTING CIRCUIT BREAKERS. EC SHALL VERIFY PRIOR TO ROUGH-IN THAT EXISTING PANELBOARD HAS SPARE CAPACITY TO ACCOMMODATE ADDITIONAL LOAD.
- 16.471 FURNISH AND INSTALL NEW 20 AMP, 120 VOLT ISOLATED GROUND CIRCUIT(S). FEED FROM PANELBOARD AS INDICATED. PROVIDE 20A-1P CIRCUIT BREAKER IF NEEDED. EC SHALL MATCH TYPE AND AIC RATINGS OF EXISTING CIRCUIT BREAKERS. PROVIDE ORANGE COVER PLATES ON ALL ISOLATED GROUND DEVICES WITH CIRCUIT NUMBER ENGRAVED UNLESS NOTED OTHERWISE. EC SHALL VERIFY PRIOR TO ROUGH-IN THAT EXISTING PANELBOARD HAS SPARE CAPACITY TO ACCOMMODATE ADDITIONAL LOAD.
- 16.492 EC SHALL COORDINATE WITH GENERAL CONTRACTOR AND ARCHITECTURAL DEMOLITION PLANS THE EXTENT OF ELECTRICAL DEMOLITION. REMOVE CONDUITS AND WIRES ALL THE WAY BACK TO ORIGINATING JUNCTION BOXES OR PANELBOARDS. DEMOLITION SHALL NOT AFFECT ACTIVE CIRCUITS. LABEL DEMOLISHED CIRCUIT(S) IN PANELBOARDS AS "SPARE". COORDINATE EXACT REQUIREMENTS AND EXISTING CONDITIONS PRIOR TO BID.
- 16.508 INSECT CONTROL: PROVIDE BROWN DEVICE AND MATCHING COVER PLATE AT +54".
- 16.603 PROVIDE RECESSED ALARM JUNCTION BOX (WITH VERTICAL RACEWAY) AT +84" (UNLESS NOTED OTHERWISE).
- 16.606 PROVIDE THREE RECESSED ALARM JUNCTION BOXES (WITH ONE VERTICAL RACEWAY), INSTALL BOXES +52" TO BOTTOM OF BOX AT 10" OC WITH 3/4" CONDUIT NIPPLES BETWEEN BOXES.
- 16.606B PROVIDE THREE RECESSED 4"x4" ALARM JUNCTION BOXES WITH ONE 3/4" CONDUIT RACEWAY TO BAR JOIST AND ACCESSIBLE FROM SALES FLOOR. INSTALL (2) BOXES AT +54" AT 9" OC, (1) BOX AT 48" WITH 3/4" CONDUIT NIPPLES BETWEEN BOXES.
- 16.770 EC SHALL DISCONNECT, EXTEND, AND RECONNECT ALL ELECTRICAL CIRCUITRY. LABEL ALL ASSOCIATED PANELBOARD SCHEDULES TO REFLECT SYSTEM NUMBERS AND LOAD DESCRIPTION. VERIFY CONDITION OF BRANCH CIRCUIT, CONDUIT, AND WIRE PRIOR TO USE TO ENSURE THAT THEY MEET ALL U.L. RATINGS AND REPLACE AS REQUIRED. COORDINATE THIS PROCESS WITH CONSTRUCTION MANAGER TO MINIMIZE DOWNTIME.
- 16.957 CONNECT CIRCUIT(S) TO EXISTING BRANCH CIRCUITRY. MINIMUM WIRE SIZE AND PANELBOARD CIRCUIT ARE NOTED. VERIFY SIZE, RATING AND CONDITION OF EXISTING BRANCH CIRCUIT CONDUIT AND WIRE PRIOR TO USE TO ENSURE THAT THEY MEET REQUIRED SIZE, AND ALL U.L. RATINGS AND REPLACE AS REQUIRED.
- 16.W71 VOICE/DATA: FURNISH AND INSTALL AN OUTLET WITH COVER AT EACH LOCATION SHOWN, AND 3/4" CONDUIT WITH PULL WIRE. FROM EACH BOX TO BAR JOISTS. PROVIDE BUSHING ON END OF CONDUIT AT BAR JOISTS. DO NOT COMBINE CONDUIT INTO ONE DROP WITH CONDUIT ROUTED FROM BOX-TO-BOX. INSTALL INDIVIDUAL CONDUIT TO EACH BOX.

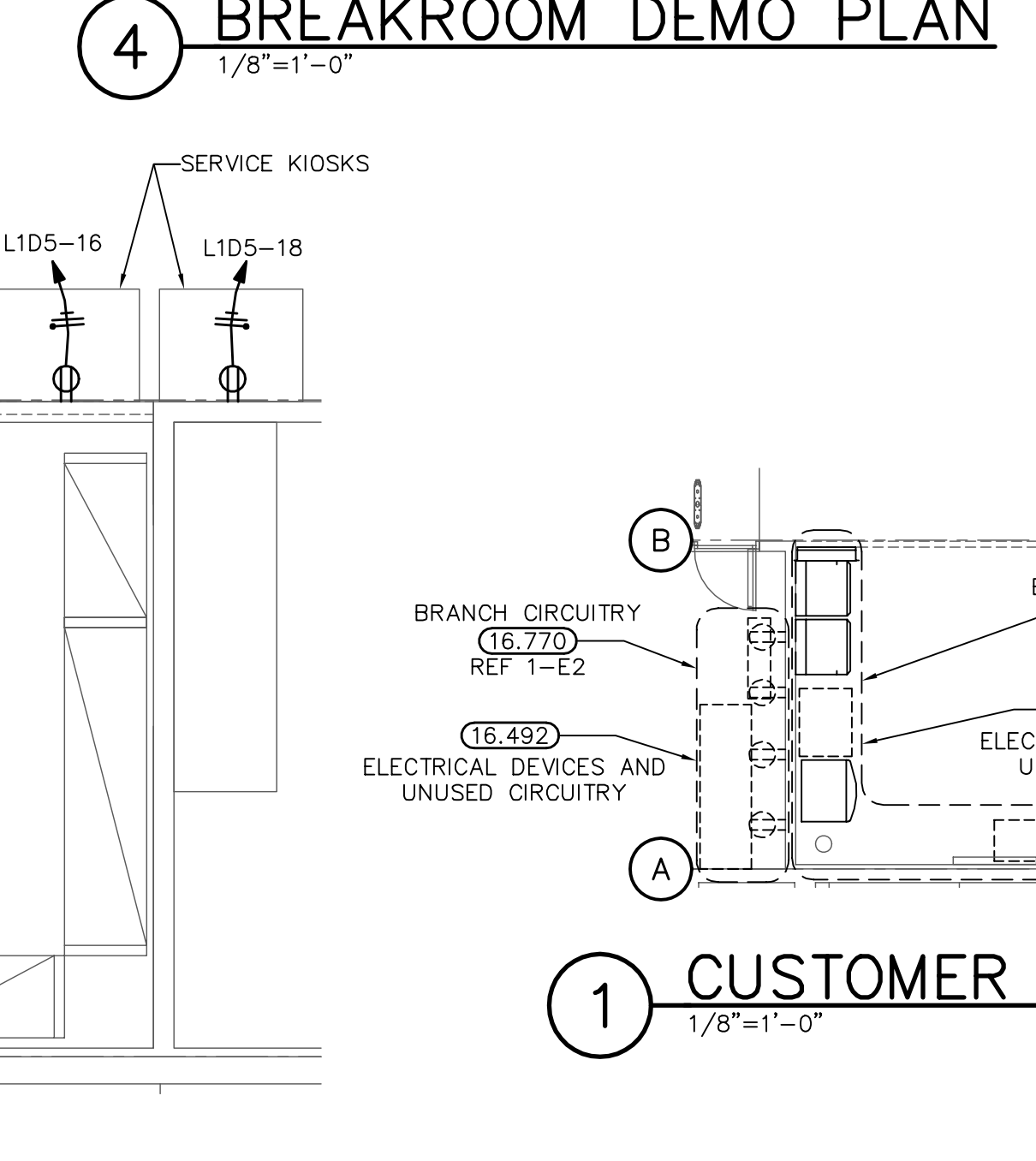
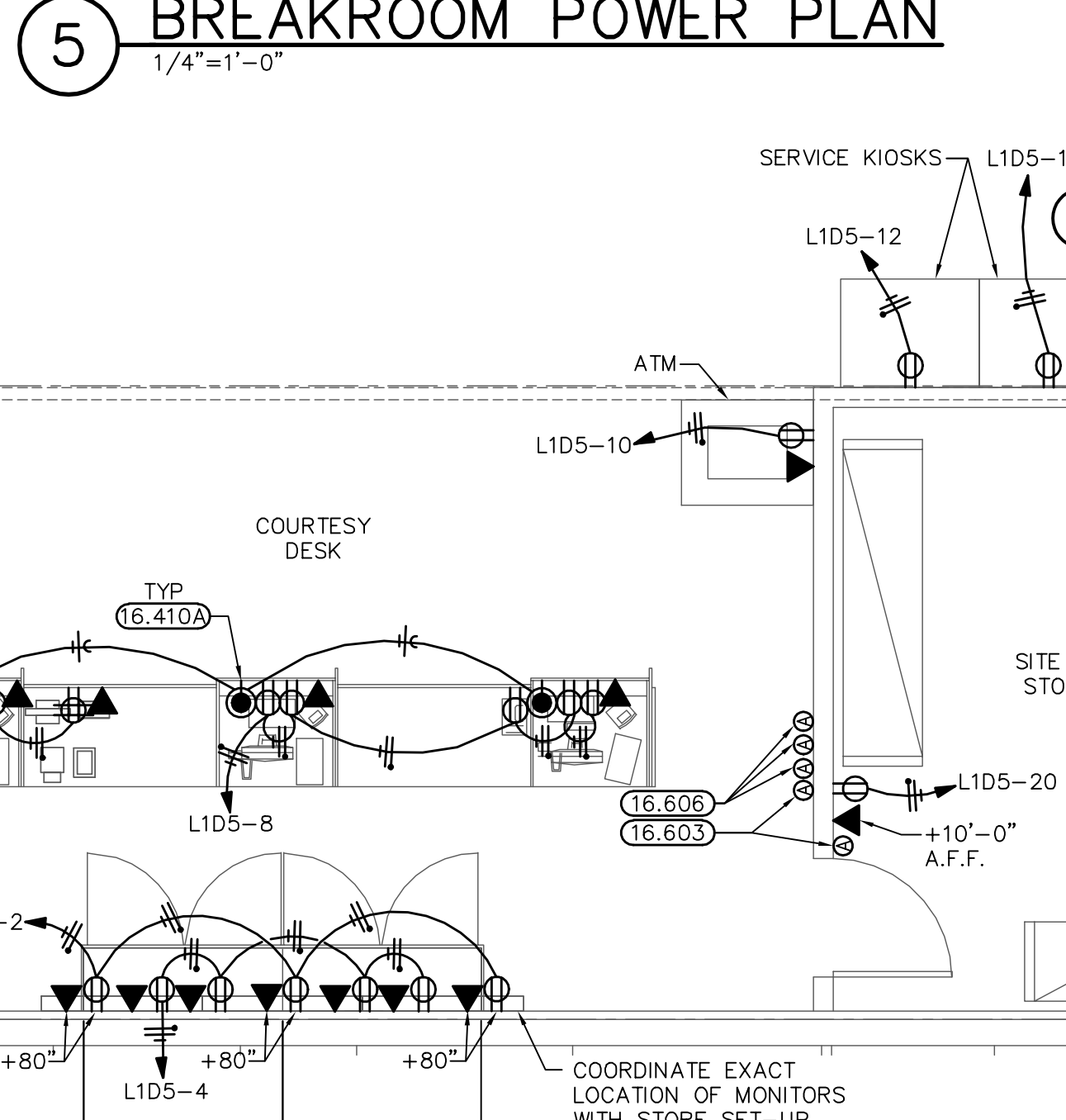
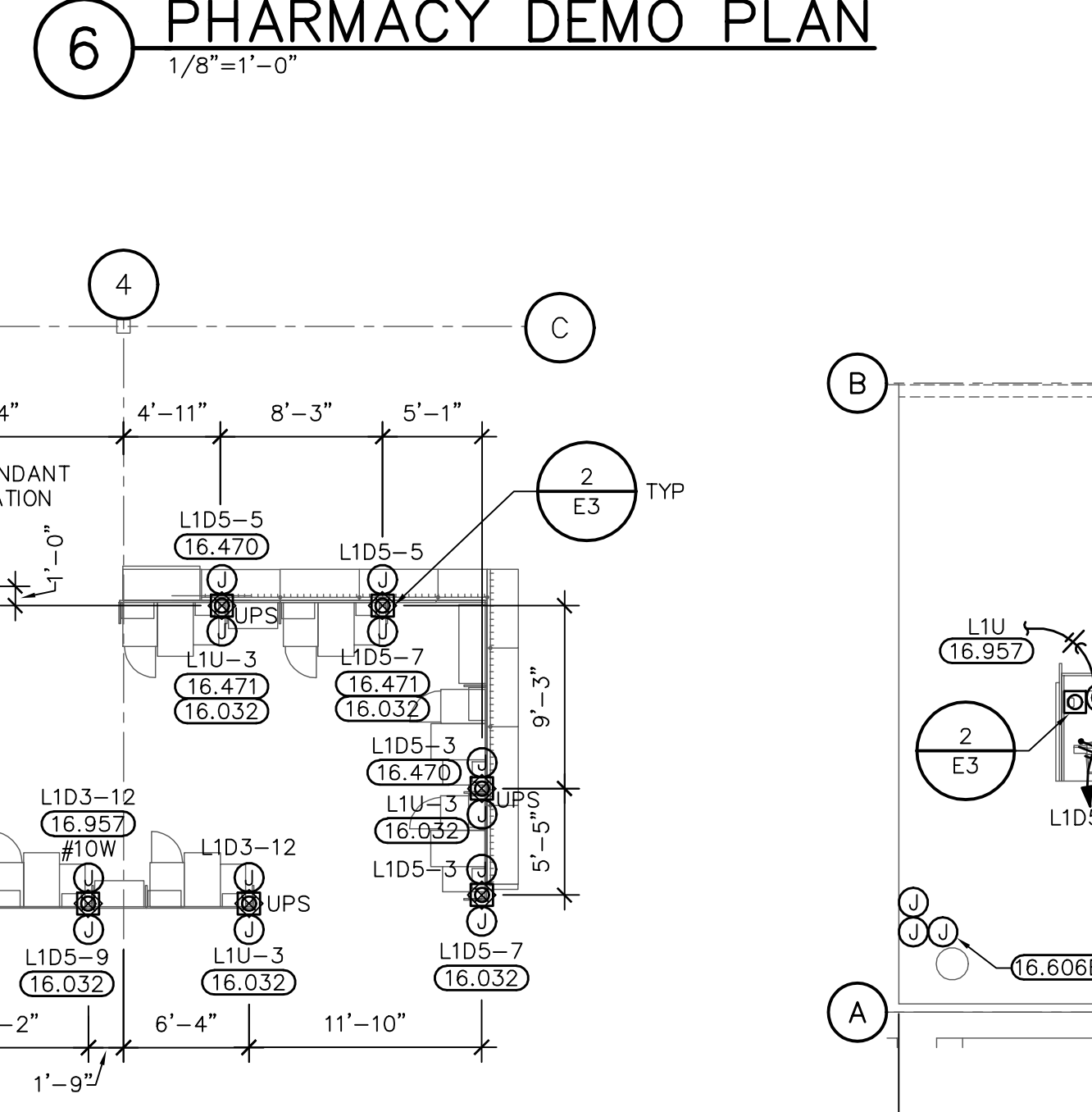
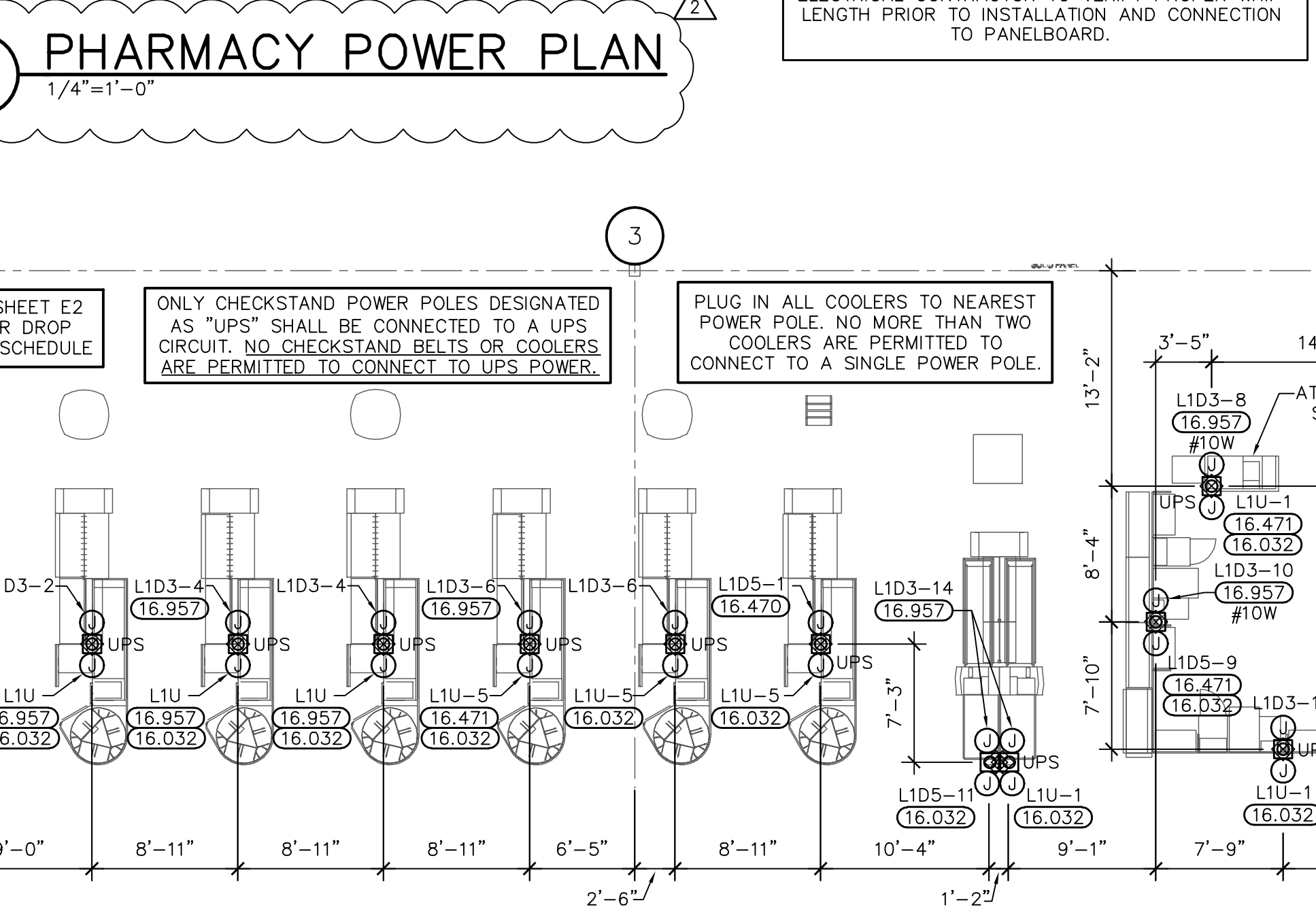
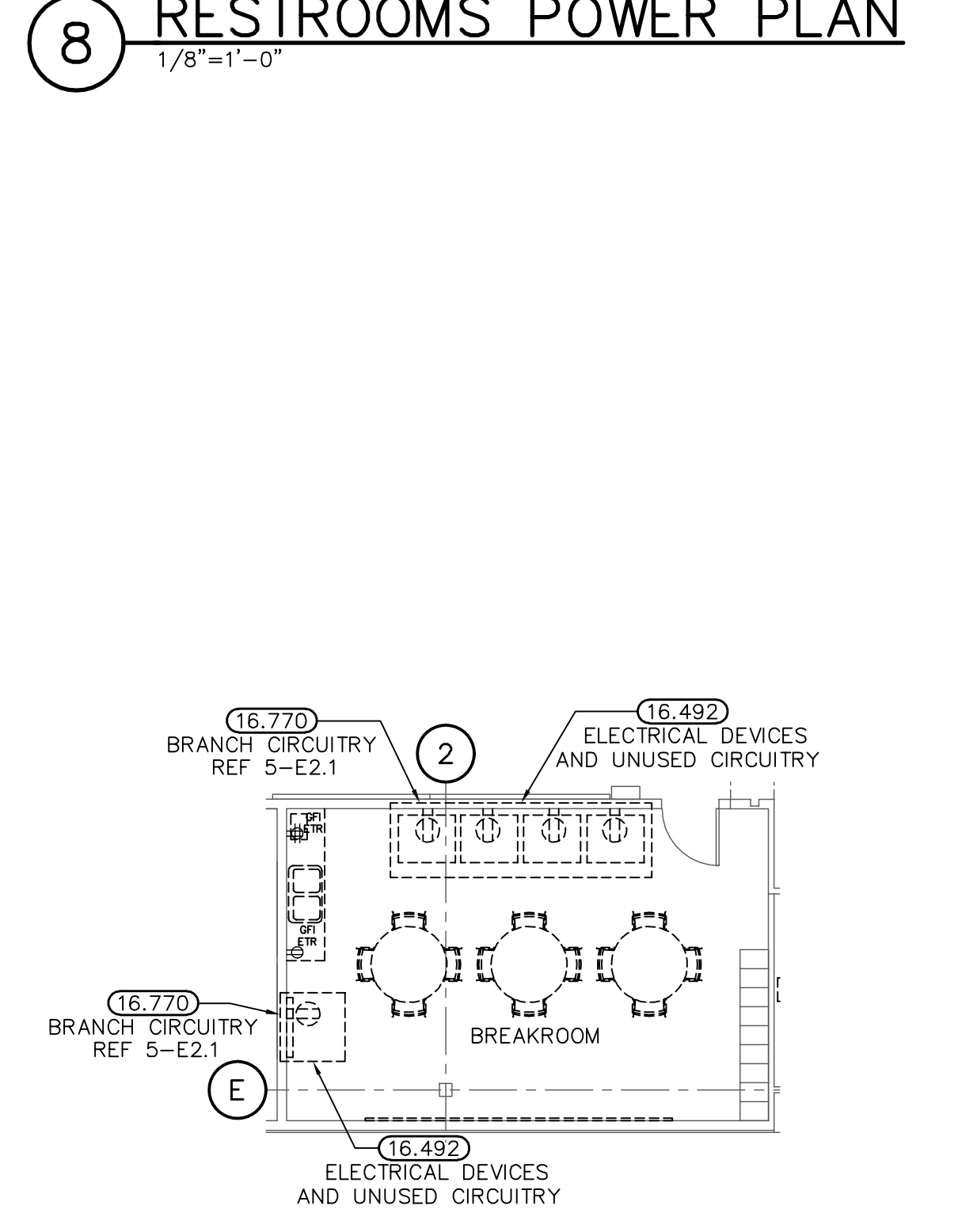
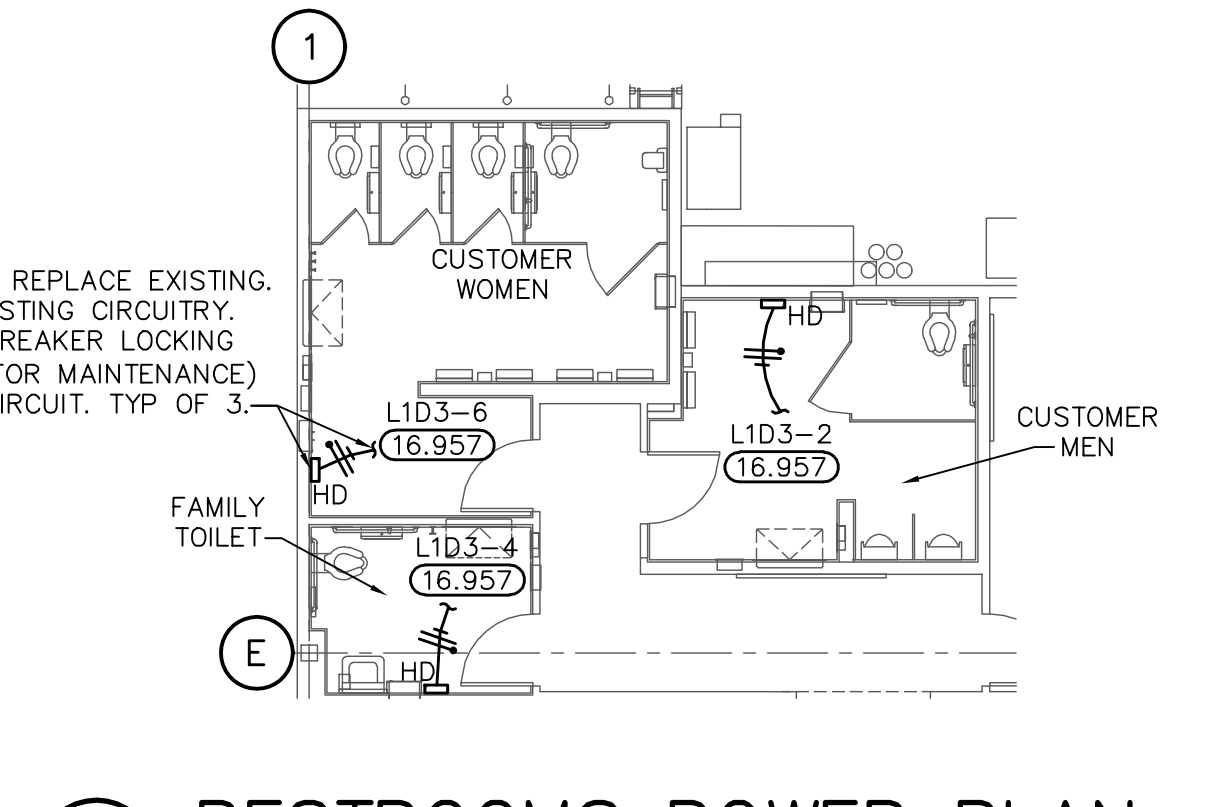
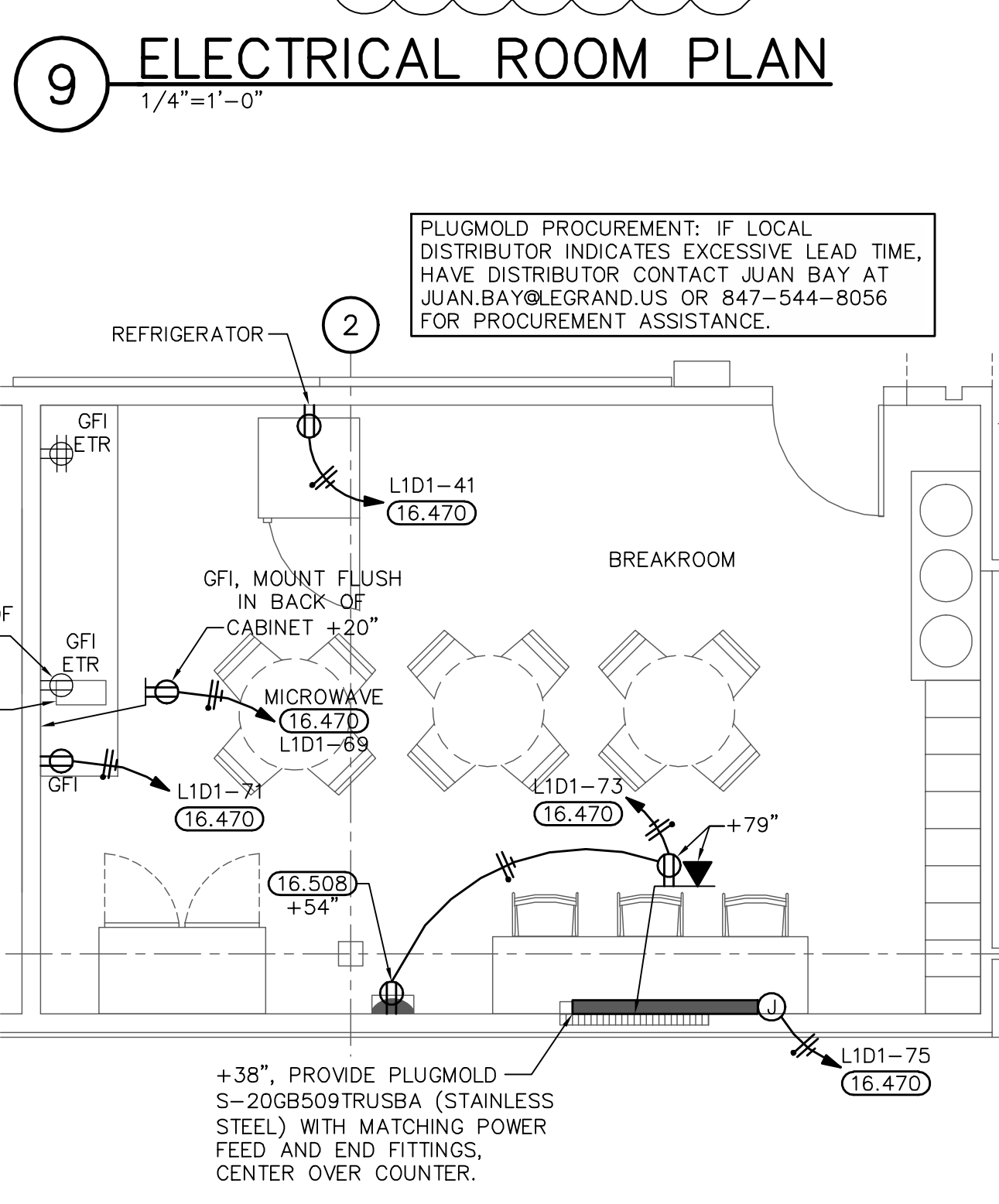
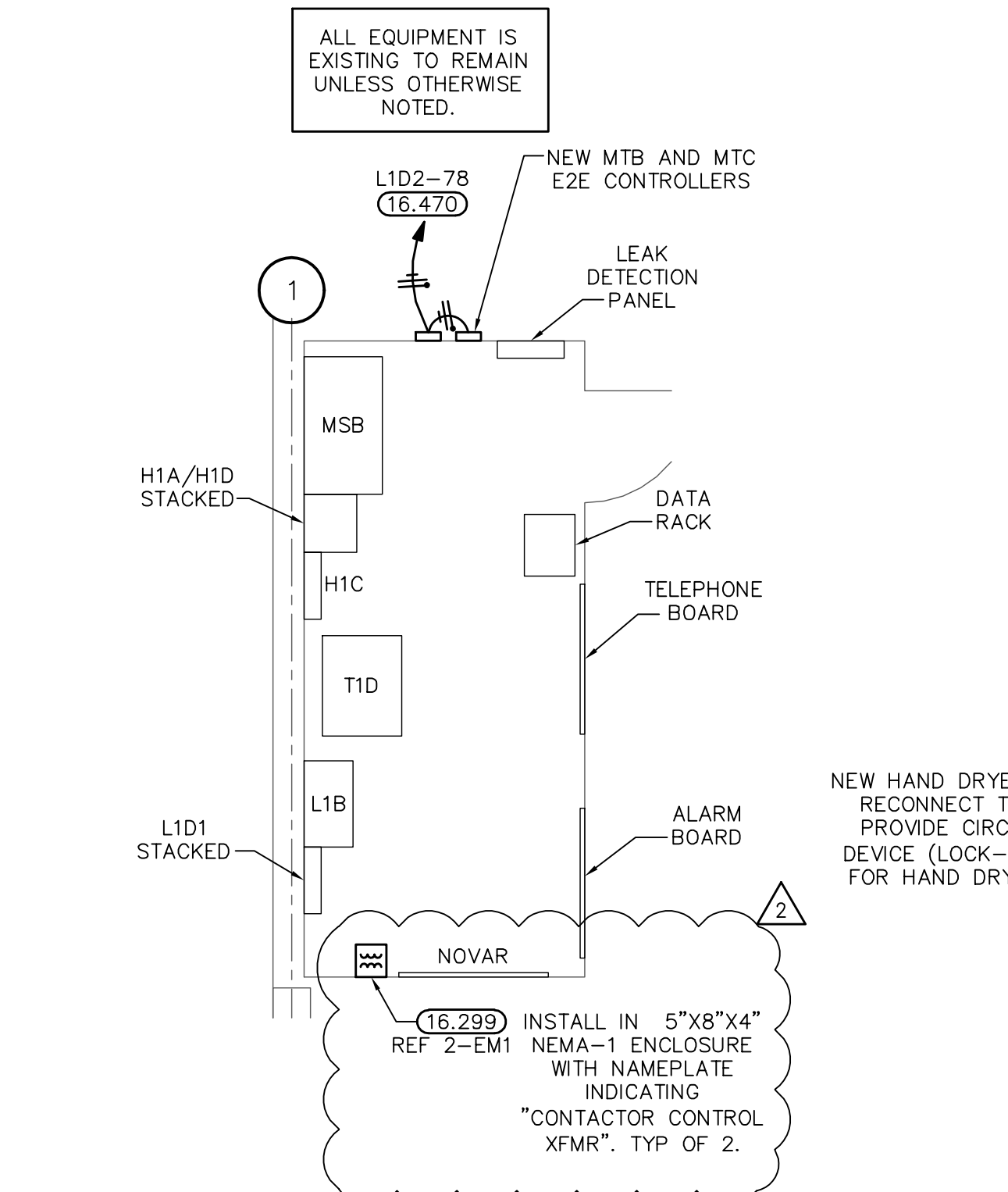
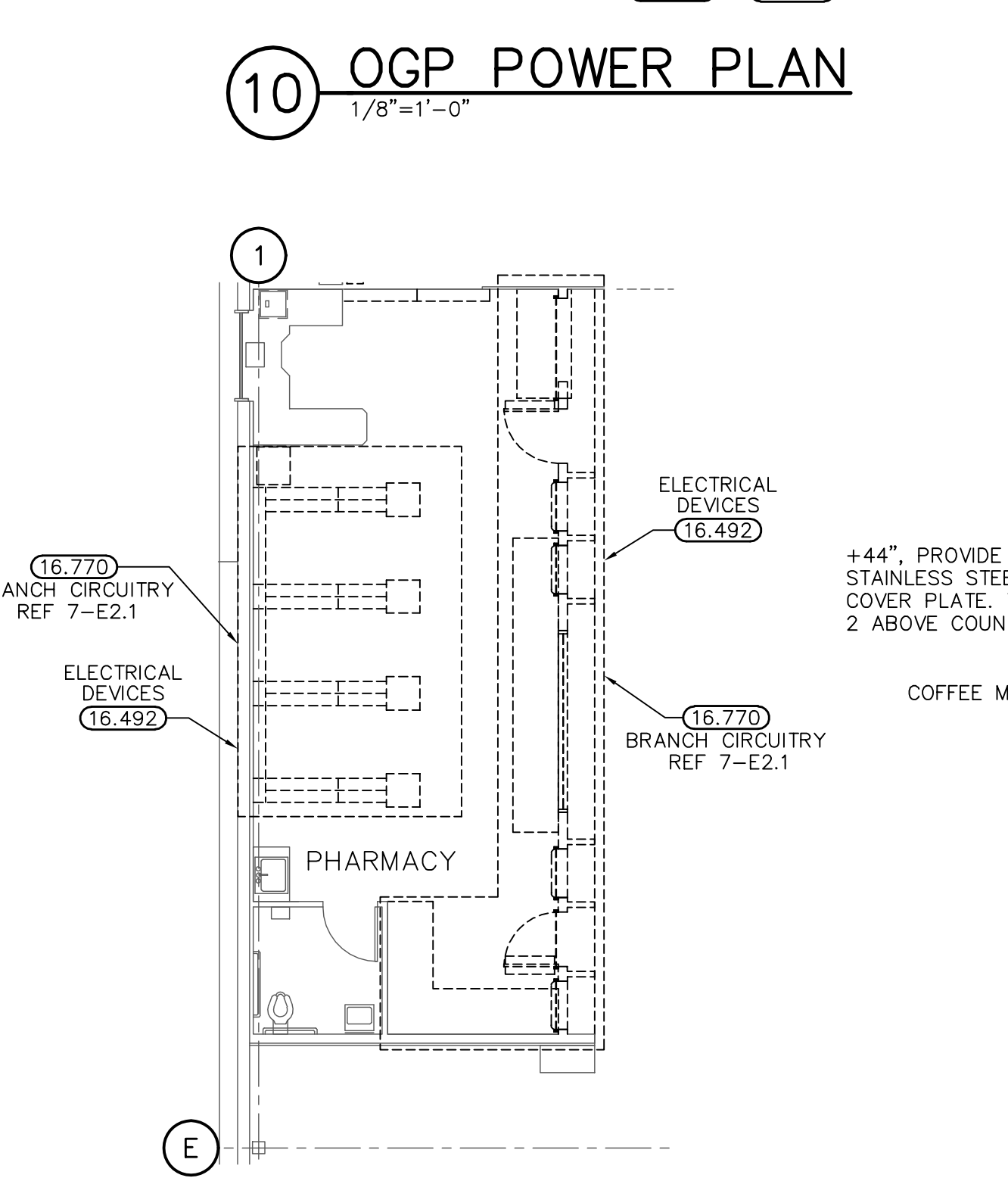
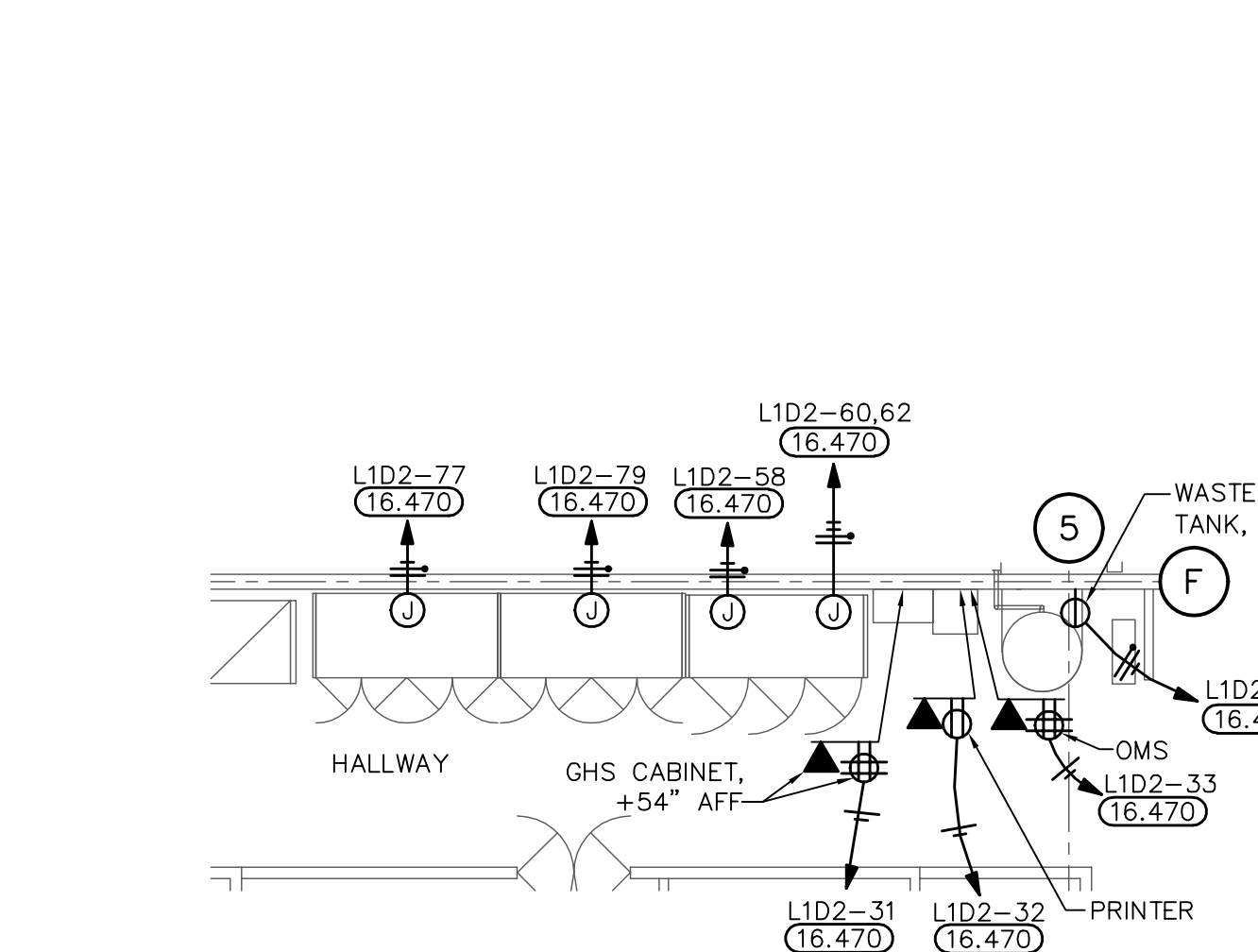
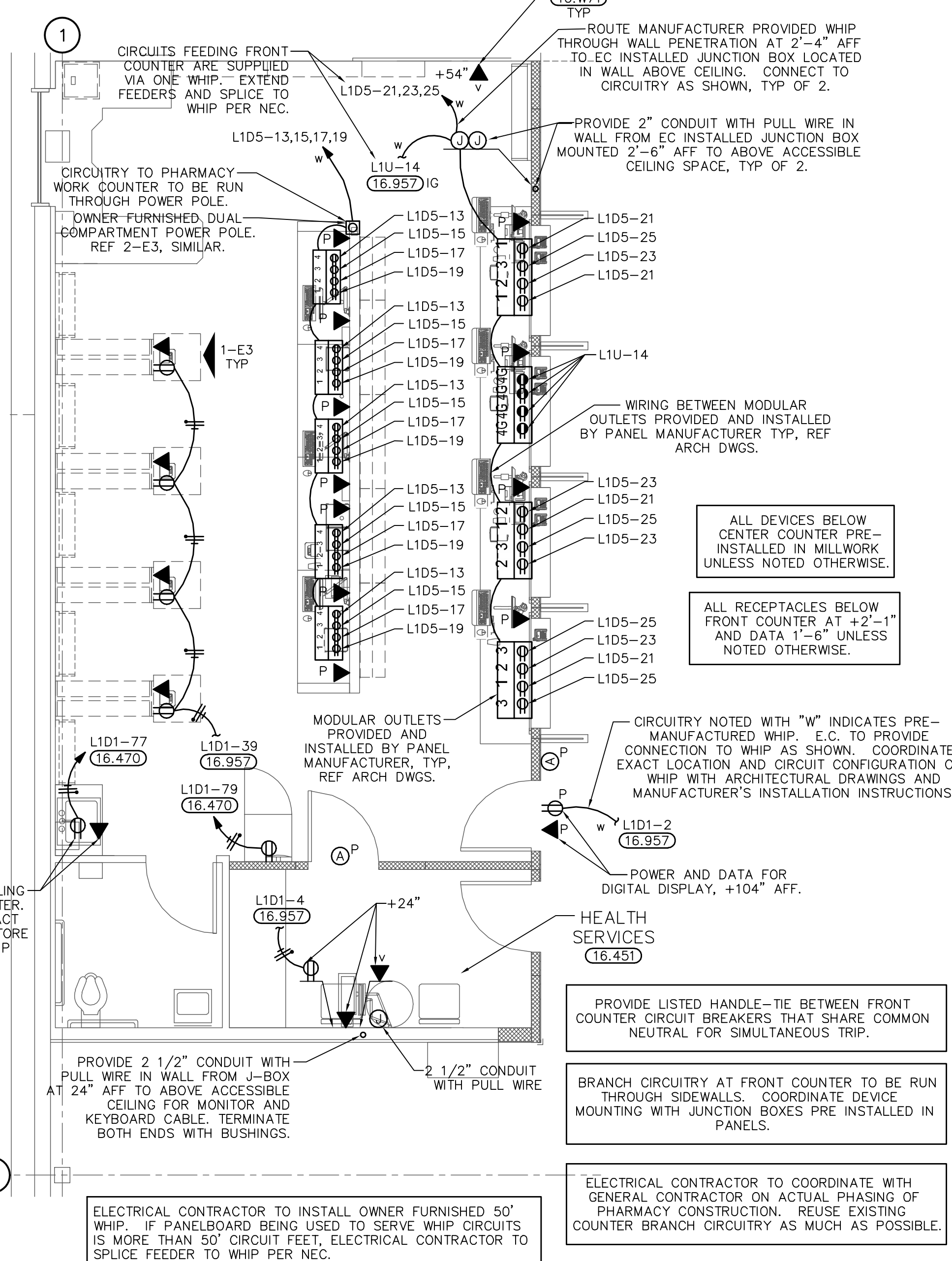
LEGEND FOR MODULAR COMPONENTS

- MODULAR POWER DISTRIBUTION SYSTEM FURNISHED BY OWNER, INSTALLED BY E.C.
- VOICE/DATA BOX PRE-INSTALLED BY MODULAR MANUFACTURER.
- OUTLET, BOX, AND WIRING BETWEEN DEVICES PRE-INSTALLED BY MODULAR MANUFACTURER. E.C. TO MAKE FINAL CONNECTION AS REQUIRED.
- ALARM SYSTEM JUNCTION BOX PRE-INSTALLED BY MODULAR MANUFACTURER.

RECEPTACLE INSTALLED IN POWER STRIP
POWER STRIP
NUMBER INDICATES PIN LOCATION ON REAR OF RECEPTACLE. THIS DENOTES WHICH CIRCUIT THE RECEPTACLE IS ATTACHED TO.

AMPINERGY MODULAR POWER DISTRIBUTION MANUFACTURED BY COMSCOPE - REFER TO MANUFACTURER'S INSTRUCTIONS FOR PROPER MOUNTING.

OWNER FURNISHED MODULAR POWER DISTRIBUTION INCLUDES ALL REQUIRED LINE ENTRY CABLES, POWER-TO-POWER CABLE ASSEMBLIES, POWER DISTRIBUTION MODULES, POWER STRIPS AND OUTLETS.



REFER TO SHEET E2 FOR POWER DROP NOTES AND SCHEDULE.

ONLY CHECKSTAND POWER POLES DESIGNATED AS "UPS" SHALL BE CONNECTED TO A UPS CIRCUIT. NO CHECKSTAND BELTS OR COOLERS ARE PERMITTED TO CONNECT TO UPS POWER.

PLUG IN ALL COOLERS TO NEAREST POWER POLE. NO MORE THAN TWO COOLERS ARE PERMITTED TO CONNECT TO A SINGLE POWER POLE.

ALL DEVICES BELOW CENTER COUNTER PRE-INSTALLED IN MILLWORK UNLESS NOTED OTHERWISE.

ALL RECEPTABLES BELOW FRONT COUNTER AT +2'-1" AND DATA 1'-6" UNLESS NOTED OTHERWISE.

EXISTING CONDITIONS WERE TAKEN FROM ORIGINAL DRAWINGS AND MAY NOT REFLECT EXACT "AS-BUILT" CONDITIONS. CONTRACTOR SHALL FIELD KNOWLEDGE DOES NOT RELIEVE THE RESPONSIBILITY OF SUBMITTING FINAL BIDS. CONTRACTOR SHALL CAREFULLY COORDINATE NEW WORK AND DEMOLITION WITH ALL OTHER DISCIPLINES AND EXISTING CONDITIONS.

EACH SUBCONTRACTOR IS RESPONSIBLE FOR HAVING A THOROUGH KNOWLEDGE OF ALL DRAWINGS AND SPECIFICATIONS IN THEIR RELATED FIELD. THE FAILURE TO ACQUAINT THEMSELVES WITH THIS KNOWLEDGE DOES NOT RELIEVE THE RESPONSIBILITY OF PERFORMING THE WORK PROPERLY. NO ADDITIONAL COMPENSATION SHALL BE ALLOWED BECAUSE OF CONDITIONS THAT OCCUR DUE TO FAILURE TO FAMILIARIZE WORKERS WITH THIS KNOWLEDGE.