

RACK DISCHARGE AIR TEMPERATURE AND DEFROST PARAMETERS											
CIRCUIT #	APPLICATION	MODEL NUMBER	MANUFACTURER	EQUIPMENT #	TARGET DISCHARGE AIR TEMPERATURE (°F)	SUPERHEAT SET POINT (°F)	FREQUENCY PER DAY	PUMP OUT	MAX DURATION (MIN)	TERMINATION TEMP (°F)	DRIP TIME (MIN)
B9	M.D. Dairy	DX6XN	Kysor/Warren	(RELOCATED CASES)	33	6-8	6	0	35	47	0
B11	M.D. Island	IM	Hussmann	RD1023.552, RD1024.552 8/25/2015	32	6-8	6	0	20	48	0
C1	M.D. Dairy	DX6XN	Kysor/Warren	(RELOCATED CASES)	33	6-8	6	0	35	47	0
C2	M.D. Dairy	DX6XN	Kysor/Warren	(RELOCATED CASES)	33	6-8	6	0	35	47	0
C7	M.D. Island	IM	Hussmann	RD1023.552, RD1024.552 8/25/2015	32	6-8	6	0	20	48	0
C8	M.D. Island	IM	Hussmann	RD1023.552, RD1024.552 8/25/2015	32	6-8	6	0	20	48	0
C11	M.D. Meat	MSX	Hussmann	(RELOCATED CASES)	33	4-7	4	0	35	48	0

*EMS CONTRACTOR TO OPTIMIZE DEFROST PARAMETERS FOR NEW CASES WITHIN EXISTING STORE SETTINGS

CIM-B3 SCHEDULE (E)		
1	B09a	(SENSOR) (E)
2	B09b	(SENSOR) (E)
3	B09c	(REMOVED)
4	B09d	(REMOVED)
5	B10a	(SENSOR) (E)
6	B10b	(SENSOR) (E)
7	B10c	(SENSOR) (E)
8	Spare	(E)
AUX		

EMS EQUIPMENT SALVAGE REQUIREMENTS

ALL DEMOLISHED NOVAR EMS EQUIPMENT SHALL BE RETURNED TO WALMART MECHANICAL SERVICES CONSTRUCTION MANAGER. EQUIPMENT TO BE RETURNED INCLUDES: EXECUTIVE CONTROLLER(S), IOW(S), CIM(S), COM(S), ETC. PROVIDE DOCUMENTATION FOR ALL EQUIPMENT REMOVED IN ACCORDANCE WITH SPECIFICATIONS AND REQUIRED CLOSE-OUT DOCUMENTS.

CIM-C1 SCHEDULE (E)		
1	C01a	(SENSOR) (E)
2	C01b	(SENSOR) (E)
3	C02a	(SENSOR) (E)
4	C02b	(SENSOR) (E)
5	SPARE	(E)
6	C04	(SENSOR) (E)
7	C5	(SENSOR) (E)
8	C6	(SENSOR) (E)
AUX		

CIM-C3 SCHEDULE (E)		
1	C09a	(SENSOR) (E)
2	C09b	(SENSOR) (E)
3	C09c	(SENSOR) (E)
4	SPARE	(E)
5	C11a	(SENSOR) (E)
6	C11b	(SENSOR) (E)
7	C11c	(SENSOR) (R)
8	C11d	(SENSOR) (R)
AUX		

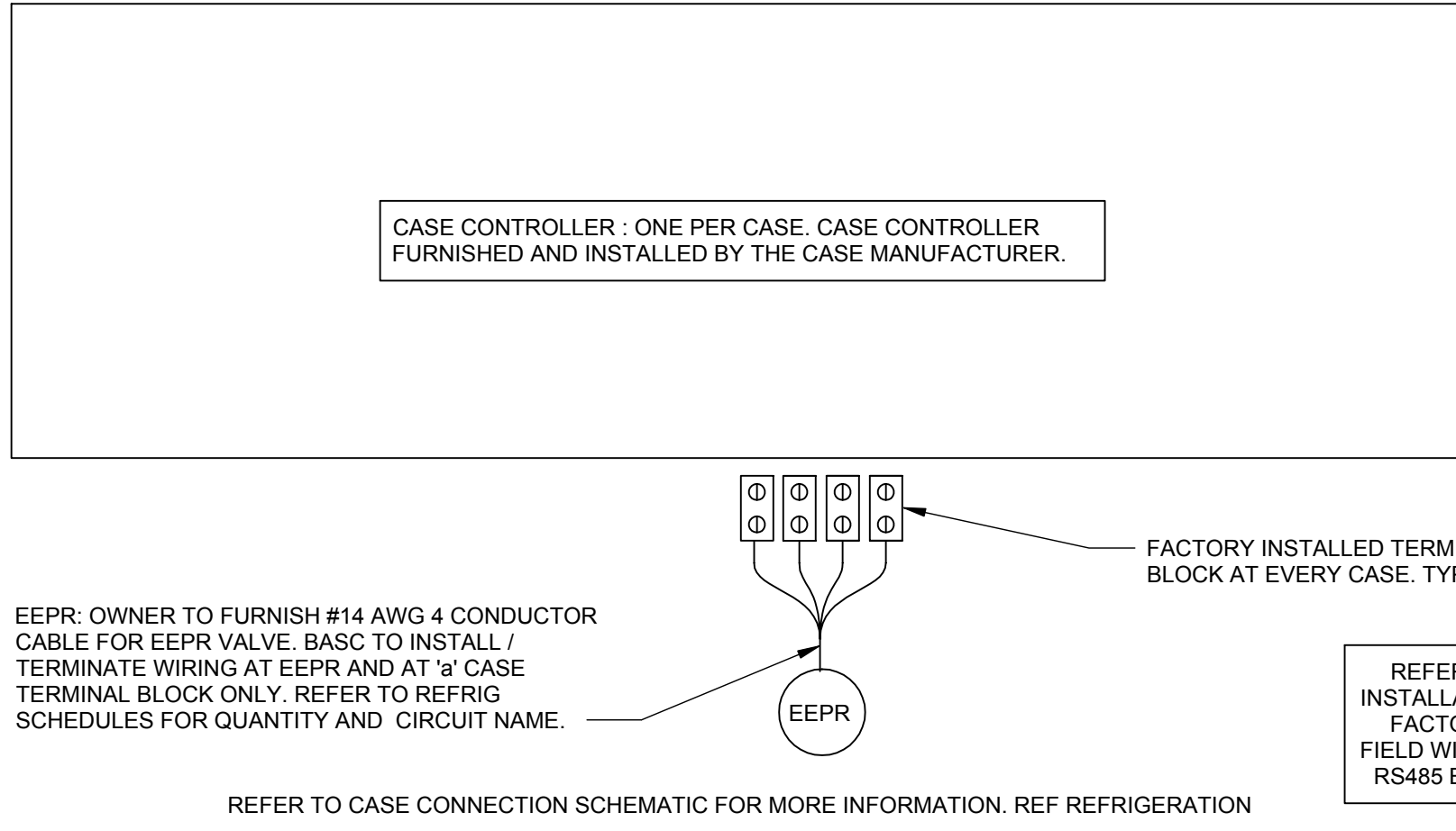
GENERAL REFRIGERATION EMS NOTES

- EMS CONTRACTOR SHALL CONTACT THE EMS SUPPLIER TO OBTAIN A CURRENT MODULE CONFIGURATION PRINTOUT BEFORE TERMINATING SENSOR LEADS AT INPUT MODULES. THE REQUEST FOR THE CONFIGURATION PRINTOUT SHALL BE MADE PRIOR TO THE INSTALLATION OF EMS CABLES. WIRING TERMINATIONS SHALL BE LANDED ACCORDING TO THE EMS SUPPLIER CONFIGURATION SHEETS.
- EMS CONTRACTOR SHALL PROVIDE COMPLETED REFRIGERATION SENSOR INPUT VERIFICATION FORMS TO THE EMS SUPPLIER AT THE BEGINNING OF THE REFRIGERATION EQUIPMENT STARTUP. EMS INSTALLER SHALL PROVIDE ASSISTANCE TO THE EMS SUPPLIER FOR SPOT CHECKING OF SENSORS FOR ACCURACY.
- ALL EMS CABLE ON THE SALES FLOOR SHALL BE ROUTED IN CONDUIT AND CONCEALED FROM VIEW AND ROUTED ALONGSIDE OTHER PIPING OR CONDUIT AS MUCH AS POSSIBLE.
- EMS CONTRACTOR SHALL BE PRESENT AND AVAILABLE TO RESOLVE ISSUES AND PROVIDE REFRIGERATION STARTUP ASSISTANCE UNTIL RELEASED BY THE EMS SUPPLIER AND WAL-MART REFRIGERATION COORDINATOR.
- DURING THE REFRIGERATION STARTUP, EMS CONTRACTOR SHALL COMPLETE ALL UNRESOLVED REFRIGERATION WORK PRIOR TO WORKING ON OTHER EMS INSTALLATION ITEMS.
- WHEN THE EMS SUPPLIER IS NOT SCHEDULED TO PERFORM THE ON SITE REFRIGERATION STARTUP, THE CONTRACTOR IS RESPONSIBLE FOR PERFORMING ALL CHECKS AND TEST TO ENSURE A FULLY FUNCTIONAL REFRIGERATION CONTROL SYSTEM. CONTACT THE EMS SUPPLIER FOR THE BLANK TEST VERIFICATION FORMS AND INSTRUCTIONS FOR COMPLETING ALL COMPLETED TEST VERIFICATION FORMS SHALL BE RETURNED TO THE WALMART MECHANICAL SERVICES CONSTRUCTION MANAGER.
- REFER TO ARCHITECTURAL DRAWINGS FOR PIPING INSTALLATION AND SEALING REQUIREMENTS FOR DEVICES SHOWN ON COOLER/FREEZER PANELS. DO NOT INSTALL PIPING WITHIN COOLER/FREEZER PANELS.
- ROUTE ALL UTILITY SERVICE LINES (PIPES AND CONDUIT) WITHIN STUD WALLS WHEREVER POSSIBLE. ON COOLER/FREEZER PANELS IN FOOD PREP AREAS WHERE UTILITIES MUST BE EXPOSED, CONTRACTOR TO HAVE THE OPTION OF THE FOLLOWING:
 - SURFACE MOUNT UTILITIES WITH NON-CORROSIVE ANCHORS; SEAL BOTH SIDES OF PIPE/CONDUIT TO PANEL CONTINUOUSLY WITH SEALANT.
 - INSTALL UTILITIES 1/2" OFF FACE OF PANEL TO ALLOW FOR CLEANING; USE ONLY NON-CORROSIVE MATERIALS FOR SPACERS AND ANCHORS.
 - COVER UTILITIES WITH 20 GAUGE STAINLESS STEEL BENT PLATES MOUNTED TO WALL WITH NON-CORROSIVE ANCHORS; APPLY CONTINUOUS SEALANT ALONG EDGES AND JOINTS.
- REFERENCE ARCHITECTURAL DEMOLITION PLANS FOR FULL EXTENT OF DEMOLITION WORK REQUIRED.

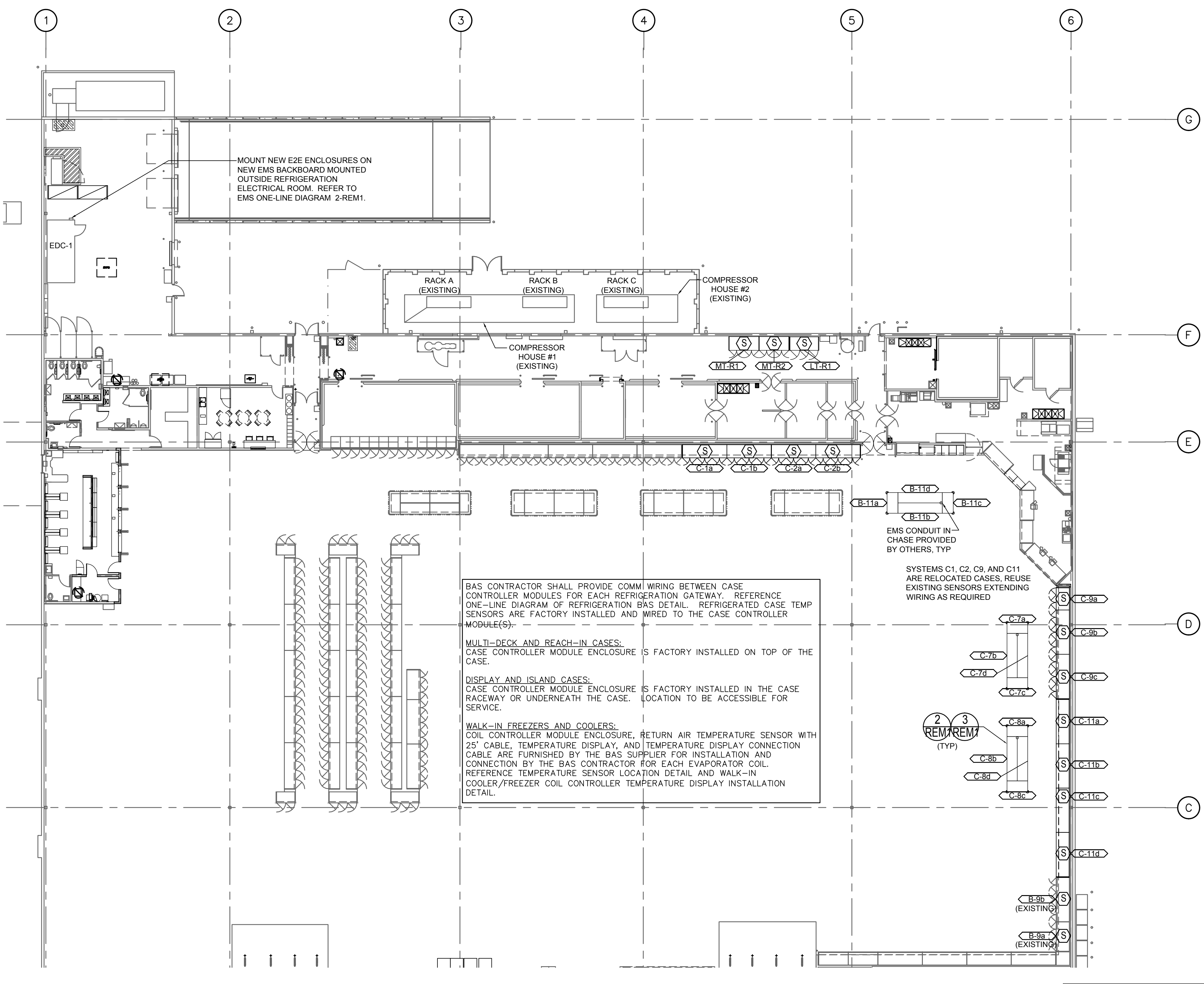
CONSULTANTS
CTA ARCHITECTS ENGINEERS
306 W. BIAL ROAD, SUITE 104
MISSISSAUGA, ONT. L4X 1L3
Phone: (416) 709-8522
Fax: (416) 728-8287

STIPULATION FOR REUSE
THIS DRAWING WAS PREPARED FOR USE ON A SPECIFIC SITE AT THE TIME OF ITS CREATION. IT IS NOT TO BE REUSED FOR ANY OTHER PROJECT OR SITE. THE USER OF THIS DRAWING FOR ANY OTHER PROJECT OR SITE IS RESPONSIBLE FOR OBTAINING THE SERVICES OF A PROFESSIONAL ARCHITECT AND ENGINEER TO VERIFY THE ACCURACY OF THIS DRAWING FOR REUSE. THIS DRAWING IS NOT AUTHORIZED AND MAY BE CONTRARY TO THE LAW.

Walmart
Neighborhood Market
FORT WORTH, TX
STORE NO. 2979-211
JOB NUMBER: USMR-000304
GENERAL REMODEL



3 CASE CONTROLLER WIRING NTS



1 REFRIGERATION ENERGY MANAGEMENT PLAN 1/16" = 1'-0"

REM SYMBOLS

SYMBOL	DESCRIPTION
◁LTA-X	REFRIGERATION CIRCUIT
XCM.20R	REFRIGERATION RACK CONTROLLER
RIM	RACK INPUT MODULE
ROM	RACK OUTPUT MODULE
CIM	CASE INPUT MODULE
DIS	DIGITAL INPUT SWITCH (DUAL-TEMP)
RIB	RELAY IN A BOX
S	CASE/COIL TEMPERATURE MODULE
BIM	UNIVERSAL INPUT MODULE
MINIG	INPUT/OUTPUT MODULE
C#	CONTACTOR
IR	INTERFACE RELAY
RCC	RCC CASE CONTROLLER
---	NEW EQUIPMENT
---	EXISTING EQUIPMENT
---	EQUIPMENT TO BE DEMOLISHED

CIM NOTES

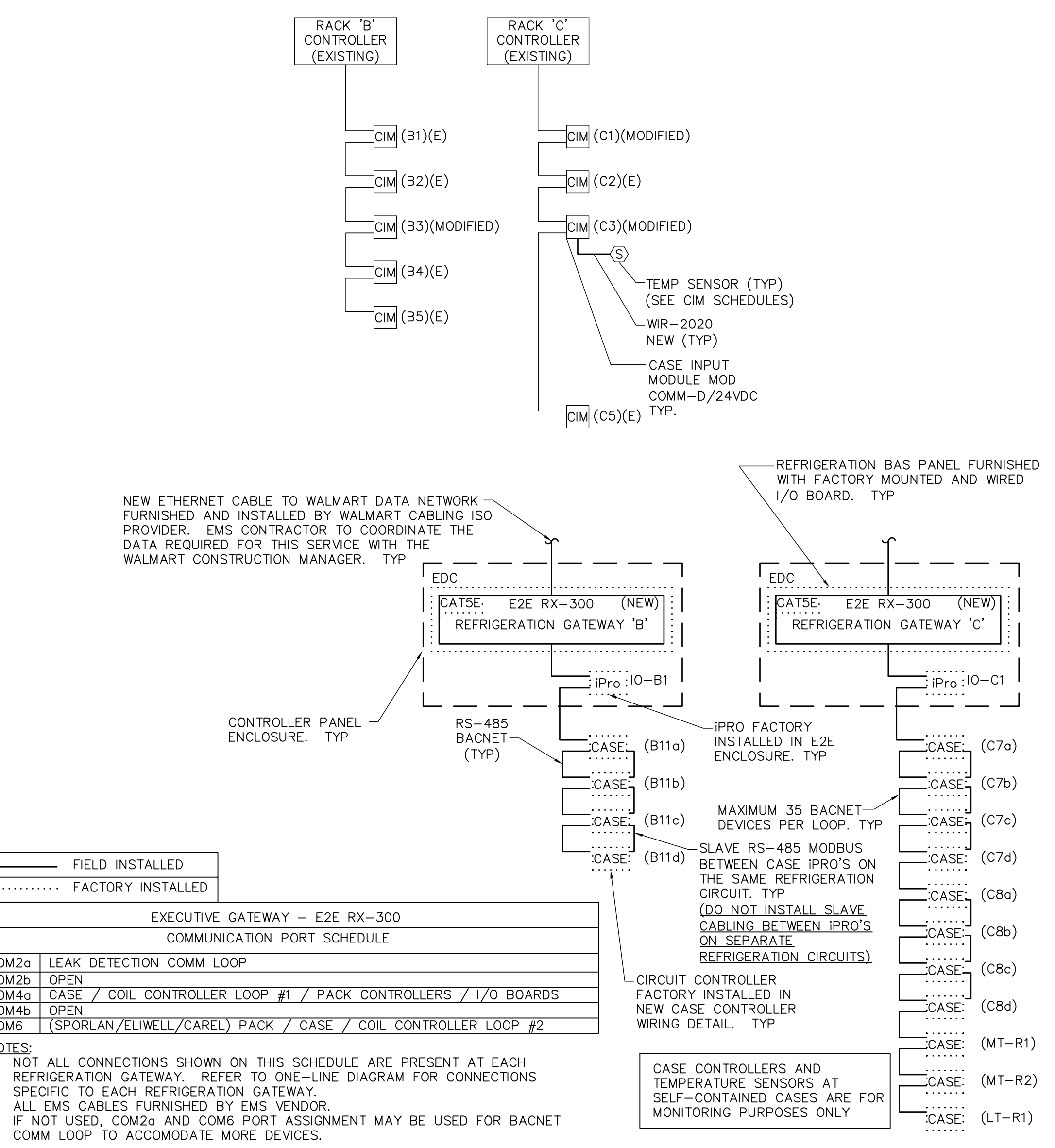
- (E) - EXISTING DEVICE TO REMAIN
(R) - EXISTING DEVICE TO RELOCATE AND RECONNECT
- MONITORING ONLY DEVICE
** - FACTORY INSTALLED DEVICE
- NOTE: ALL DEVICES NOT NOTED ARE NEW
- WIRE LEGEND
WR-1010 (TAN CABLE 18-2, 20-2 TWISTED PAIR)
WR-2020 (BLUE CABLE 22-2 TWISTED PAIR)
BELDEN 8719 (16-2 TWISTED PAIR)
BELDEN 8761 (22-2 TWISTED PAIR)
BELDEN 8771 (22-3 TWISTED PAIR)
BELDEN 9418 (18-4 W/DRAIN GROUND)
BELDEN 1120A (18-3 TWISTED PAIR)
- NOTES:
1. ALL CABLE WR-2020 UNLESS NOTED OTHERWISE.
2. ALL CABLE FURNISHED AND INSTALLED BY EMS CONTRACTOR.

ONE-LINE REFLECTS THE INTENDED DESIGN BASED ON NEW CASES AND EXISTING SYSTEM NUMBERS. VERIFY ALL EXISTING CONDITIONS AND LOCATION OF ALL EMS EQUIPMENT PRIOR TO ROUGH-IN.

NOTE: ALL WORK ON THIS SHEET IS TO BE COMPLETED BY A WAL-MART APPROVED CONTRACTOR.

24 HOURS PRIOR TO SHUTTING DOWN ANY REFRIGERATION SYSTEMS, HVAC SYSTEMS, OR ENERGY MANAGEMENT CONTROL SYSTEMS, SEND E-MAIL TO NSRM@WALMART.COM. THE E-MAIL SHALL STATE WHAT, WHY, AND WHEN IT IS BEING SHUT DOWN AND HOW LONG IT IS ANTICIPATED TO BE DOWN. THEN SEND A FOLLOW UP E-MAIL TO NSRM@WALMART.COM AFTER THE WORK IS COMPLETE AND THE SYSTEM IS BACK UP AND RUNNING.

EACH SUBCONTRACTOR IS RESPONSIBLE FOR HAVING A THOROUGH KNOWLEDGE OF ALL DRAWINGS AND "AS-BUILT" CONDITIONS. CONTRACTOR SHALL FIELD FAILURE ALL EXISTING CONDITIONS PRIOR TO SUBMITTING FINAL BIDS. CONTRACTOR SHALL CAREFULLY COORDINATE NEW WORK AND DEMOLITION WITH ALL OTHER DISCIPLINES AND EXISTING CONDITIONS.



2 REFRIGERATION EMS ONE-LINE DIAGRAM NTS

Feb 09, 2018 - 1:26pm - USER: stavep
V: Walmart\2018 remodels\CN 2979 Fort Worth, TX\CAD\4250 - REM1 REFRIGERATION ENERGY MANAGEMENT PLAN AND DETAILS - 2979.dwg

ISSUE BLOCK	
02/12/18	PERMIT/ BID
30 X 42	SHEET SET

CHECKED BY: JR
DRAWN BY: SP
PROTO: 52
PROTO CYCLE: 12/29/17
DOCUMENT DATE: 02/12/18

DOCUMENTS WITHOUT SIGNATURE AND REQUIRED SEAL OF AOR/EOR ARE NOT FOR CONSTRUCTION

REGISTERED TO CONDUCT BUSINESS: 800250643
REGISTERED AS ENGINEERING FIRM: F-2217
REGISTERED AS: CTA INC.
DBA: CTA ARCHITECTS ENGINEERS

February 07, 2018
License #111150

REFRIGERATION ENERGY MANAGEMENT PLAN AND DETAILS
CPC

SHEET: REM1