

2012 TEXAS ACCESSIBILITY STANDARDS

THE PROVIDED INFORMATION IS CONDENSED FROM THE TEXAS ACCESSIBILITY STANDARDS. IT SHALL SERVE AS CRITERIA FOR THE CONSTRUCTION OF ALL ACCESSIBLE ELEMENTS AND SPACES FOR THE HANDICAPPED. IN THE EVENT OF ANY CONFLICT BETWEEN THESE CRITERIA AND OTHER INFORMATION CONTAINED IN THE PROJECT DOCUMENTS, GFF SHALL BE NOTIFIED IMMEDIATELY. THE COMPLETE VERSION OF THE TEXAS ACCESSIBILITY STANDARDS MAY BE DOWNLOADED AT THE TDLR (TEXAS DEPARTMENT OF LICENSING AND REGULATION) WEBSITE.

CHAPTER 3 : BUILDING BLOCKS

301 GENERAL

301.1 SCOPE. THE PROVISIONS OF CHAPTER 3 SHALL APPLY WHERE REQUIRED BY CHAPTER 2 OR WHERE REFERENCED BY A REQUIREMENT IN THIS DOCUMENT.

302 FLOOR OR GROUND SURFACES

302.1 GENERAL. FLOOR AND GROUND SURFACES SHALL BE STABLE, FIRM, AND SLIP RESISTANT AND COMPLY WITH 302.2.

EXCEPTIONS:

1. WITHIN ANIMAL CONTAINMENT AREAS, FLOOR AND GROUND SURFACES SHALL NOT BE REQUIRED TO BE STABLE, FIRM, AND SLIP RESISTANT.
 2. AREAS OF SPORT ACTIVITY SHALL NOT BE REQUIRED TO COMPLY WITH 302.
- 302.2 CARPET. CARPET OR CARPET TILE SHALL BE SECURELY ATTACHED AND SHALL HAVE A FIRM CUSHION, PAD, OR BACKING OR NO CUSHION OR PAD. CARPET OR CARPET TILE SHALL HAVE A LEVEL LOOP, TEXTURED LOOP, LEVEL CUT PILE, OR LEVEL CUT/NO PILE TEXTURE. PILE HEIGHT SHALL BE 1/2 INCH (13 MM) MAXIMUM. EXPOSED EDGES OF CARPET SHALL BE FASTENED TO FLOOR SURFACES AND SHALL HAVE TRIM OR THE ENTIRE LENGTH OF THE EXPOSED EDGE. CARPET EDGE TRIM SHALL COMPLY WITH 303.

302.3 OPENINGS. OPENINGS IN FLOOR OR GROUND SURFACES SHALL NOT ALLOW PASSAGE OF A SPHERE MORE THAN 1/2 INCH (13 MM) DIAMETER EXCEPT AS ALLOWED IN 407.3, 409.3, 410.4, 810.3.3 AND 810.10. ELONGATED OPENINGS SHALL BE PLACED SO THAT THE LONG DIMENSION IS PERPENDICULAR TO THE DOMINANT DIRECTION OF TRAVEL.

303 CHANGES IN LEVEL

303.1 GENERAL. WHERE CHANGES IN LEVEL ARE PERMITTED IN FLOOR OR GROUND SURFACES AND COMPLY WITH 303.

EXCEPTIONS:

1. ANIMAL CONTAINMENT AREAS SHALL NOT BE REQUIRED TO COMPLY WITH 303.
2. AREAS OF SPORT ACTIVITY SHALL NOT BE REQUIRED TO COMPLY WITH 303.

303.2 VERTICAL CHANGES IN LEVEL OF 1/4 INCH (6.4 MM) HIGH MAXIMUM SHALL BE PERMITTED TO BE VERTICAL.

303.3 BEVELED. CHANGES IN LEVEL BETWEEN 1/4 INCH (6.4 MM) HIGH MINIMUM AND 1/2 INCH (13 MM) HIGH MAXIMUM SHALL BE BEVELED WITH A SLOPE NOT STEEPER THAN 1:2.

303.4 RAMPS. CHANGES IN LEVEL GREATER THAN 1/2 INCH (13 MM) HIGH SHALL BE RAMPED, AND SHALL COMPLY WITH 405 OR 406.

304 TURNING SPACE

304.1 GENERAL. TURNING SPACE SHALL COMPLY WITH 304.

304.2 FLOOR OR GROUND SURFACES. FLOOR OR GROUND SURFACES OF A TURNING SPACE SHALL COMPLY WITH 302. CHANGES IN LEVEL ARE NOT PERMITTED.

EXCEPTION: SLOPES NOT STEEPER THAN 1:48 SHALL BE PERMITTED.

304.3 SIZE. TURNING SPACE SHALL COMPLY WITH 304.3.1 OR 304.3.2.

304.3.1 CIRCULAR SPACE. THE TURNING SPACE SHALL BE A SPACE OF 60 INCHES (1525 MM) DIAMETER MINIMUM. THE SPACE SHALL BE PERMITTED TO INCLUDE KNEE AND TOE CLEARANCE COMPLYING WITH 306.

304.3.2 T-SHAPED SPACE. THE TURNING SPACE SHALL BE A T-SHAPED SPACE WITHIN A 60 INCH (1525 MM) SQUARE MINIMUM WITH ARMS AND BASE 36 INCHES (915 MM) WIDE MINIMUM. EACH SPACED T SHALL BE CLEAR OF OBSTRUCTIONS 12 INCHES (305 MM) MINIMUM IN EACH DIRECTION AND THE BASE SHALL BE CLEAR OF OBSTRUCTIONS 24 INCHES (610 MM) MINIMUM. THE SPACE SHALL BE PERMITTED TO INCLUDE KNEE AND TOE CLEARANCE COMPLYING WITH 306 ONLY AT THE END OF EITHER THE BASE OR ONE ARM.

304.4 DOOR SWING. DOORS SHALL BE PERMITTED TO SWING INTO TURNING SPACES.

305 CLEAR FLOOR OR GROUND SPACE

305.1 GENERAL. CLEAR FLOOR OR GROUND SPACE SHALL COMPLY WITH 305.

305.2 FLOOR OR GROUND SURFACES. FLOOR OR GROUND SURFACES OF A CLEAR FLOOR OR GROUND SPACE SHALL COMPLY WITH 302. CHANGES IN LEVEL ARE NOT PERMITTED.

EXCEPTION: SLOPES NOT STEEPER THAN 1:48 SHALL BE PERMITTED.

305.3 SIZE. THE CLEAR FLOOR OR GROUND SPACE SHALL BE 30 INCHES (760 MM) MINIMUM BY 48 INCHES (1220 MM) MINIMUM.

305.4 KNEE AND TOE CLEARANCE. UNLESS OTHERWISE SPECIFIED, CLEAR FLOOR OR GROUND SPACE SHALL BE PERMITTED TO INCLUDE KNEE AND TOE CLEARANCE COMPLYING WITH 306.

305.5 POSITION. UNLESS OTHERWISE SPECIFIED, CLEAR FLOOR OR GROUND SPACE SHALL BE POSITIONED FOR EITHER FORWARD OR PARALLEL APPROACH TO AN ELEMENT.

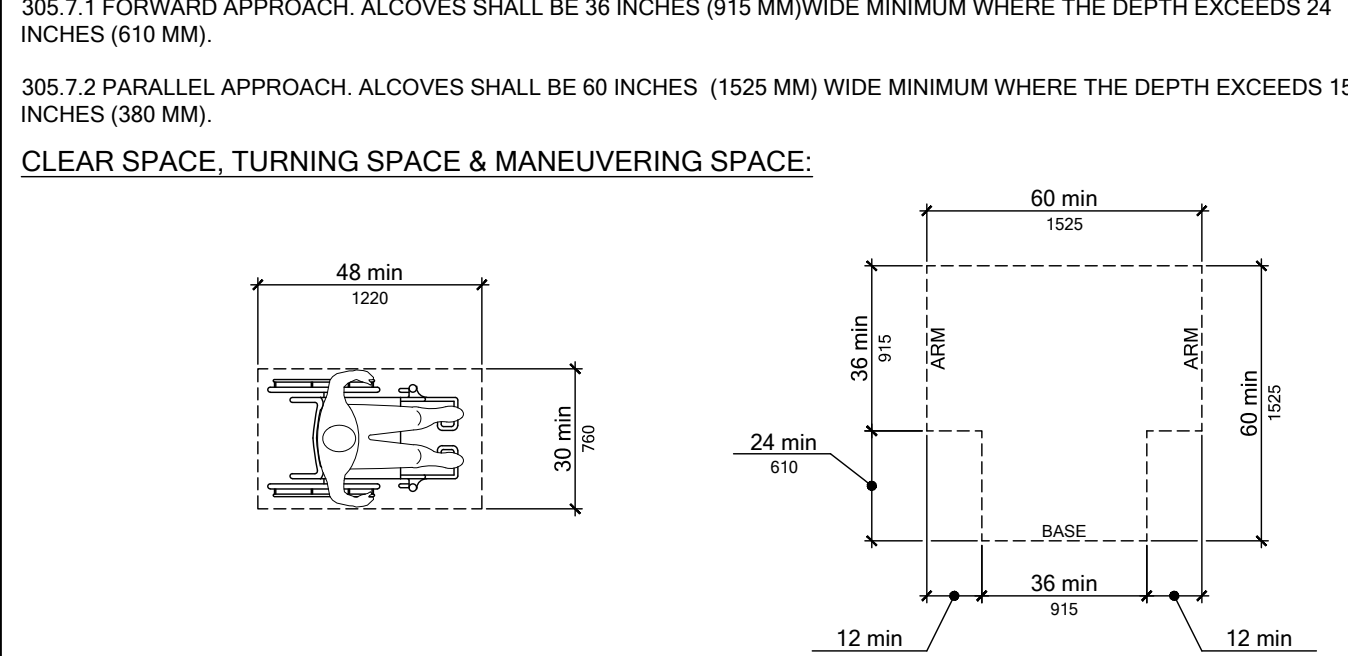
305.6 APPROACH. ONE FULL UNOBSTRUCTED SIDE OF THE CLEAR FLOOR OR GROUND SPACE SHALL ADJOIN AN ACCESSIBLE ROUTE OR ADJOIN ANOTHER CLEAR FLOOR OR GROUND SPACE.

305.7 MANEUVERING CLEARANCE. WHERE A CLEAR FLOOR OR GROUND SPACE IS LOCATED IN AN ALCOVE OR OTHERWISE CONFINED ON ALL OR PART OF THREE SIDES, ADDITIONAL MANEUVERING CLEARANCE SHALL BE PROVIDED IN ACCORDANCE WITH 305.7.1 AND 305.7.2.

305.7.1 FORWARD APPROACH. ALCOVES SHALL BE 36 INCHES (915 MM) WIDE MINIMUM WHERE THE DEPTH EXCEEDS 24 INCHES (610 MM).

305.7.2 PARALLEL APPROACH. ALCOVES SHALL BE 60 INCHES (1525 MM) WIDE MINIMUM WHERE THE DEPTH EXCEEDS 15 INCHES (380 MM).

CLEAR SPACE, TURNING SPACE & MANEUVERING SPACE:



305.8 SIDE REACH.

305.8.1 UNOBSTRUCTED. WHERE A CLEAR FLOOR OR GROUND SPACE ALLOWS A PARALLEL APPROACH TO AN ELEMENT AND THE SIDE REACH IS UNOBSTRUCTED, THE HIGH SIDE REACH SHALL BE 48 INCHES (1220 MM) MAXIMUM AND THE LOW SIDE REACH SHALL BE 15 INCHES (380 MM) MINIMUM ABOVE THE FINISH FLOOR OR GROUND.

EXCEPTIONS:

1. AN OBSTRUCTION SHALL BE PERMITTED BETWEEN THE CLEAR FLOOR OR GROUND SPACE AND THE ELEMENT WHERE THE DEPTH OF THE OBSTRUCTION IS 10 INCHES (255 MM) MAXIMUM.
2. OPERABLE PARTS OF FUEL DISPENSERS SHALL BE PERMITTED TO BE 54 INCHES (1370 MM) MAXIMUM MEASURED FROM THE SURFACE OF THE VEHICULAR WAY WHERE FUEL DISPENSERS ARE INSTALLED ON EXISTING CURBS.

305.8.2 OBSTRUCTED HIGH REACH. WHERE A CLEAR FLOOR OR GROUND SPACE ALLOWS A PARALLEL APPROACH TO AN ELEMENT AND THE HIGH SIDE REACH IS OVER AN OBSTRUCTION, THE HEIGHT OF THE OBSTRUCTION SHALL BE 34 INCHES (865 MM) MAXIMUM AND THE DEPTH OF THE OBSTRUCTION SHALL BE 24 INCHES (610 MM) MAXIMUM. THE HIGH SIDE REACH SHALL BE 48 INCHES (1220 MM) MAXIMUM FOR A REACH DEPTH OF 10 INCHES (255 MM) MAXIMUM, WHERE THE REACH DEPTH EXCEEDS 10 INCHES (255 MM). THE HIGH SIDE REACH SHALL BE 46 INCHES (1170 MM) MAXIMUM FOR A REACH DEPTH OF 24 INCHES (610 MM) MAXIMUM.

EXCEPTIONS:

1. THE TOP OF WASHING MACHINES AND CLOTHES DRYERS SHALL BE PERMITTED TO BE 36 INCHES (915 MM) MAXIMUM ABOVE THE FINISH FLOOR.
2. OPERABLE PARTS OF FUEL DISPENSERS SHALL BE PERMITTED TO BE 54 INCHES (1370 MM) MAXIMUM MEASURED FROM THE SURFACE OF THE VEHICULAR WAY WHERE FUEL DISPENSERS ARE INSTALLED ON EXISTING CURBS.

REACH RANGES:



305.8.3 SIDE REACH.

305.8.3.1 UNOBSTRUCTED. WHERE A CLEAR FLOOR OR GROUND SPACE ALLOWS A PARALLEL APPROACH TO AN ELEMENT AND THE SIDE REACH IS UNOBSTRUCTED, THE HIGH SIDE REACH SHALL BE 48 INCHES (1220 MM) MAXIMUM AND THE LOW SIDE REACH SHALL BE 15 INCHES (380 MM) MINIMUM ABOVE THE FINISH FLOOR OR GROUND.

EXCEPTIONS:

1. AN OBSTRUCTION SHALL BE PERMITTED BETWEEN THE CLEAR FLOOR OR GROUND SPACE AND THE ELEMENT WHERE THE DEPTH OF THE OBSTRUCTION IS 10 INCHES (255 MM) MAXIMUM.
2. OPERABLE PARTS OF FUEL DISPENSERS SHALL BE PERMITTED TO BE 54 INCHES (1370 MM) MAXIMUM MEASURED FROM THE SURFACE OF THE VEHICULAR WAY WHERE FUEL DISPENSERS ARE INSTALLED ON EXISTING CURBS.

305.8.3.2 OBSTRUCTED HIGH REACH. WHERE A CLEAR FLOOR OR GROUND SPACE ALLOWS A PARALLEL APPROACH TO AN ELEMENT AND THE HIGH SIDE REACH IS OVER AN OBSTRUCTION, THE HEIGHT OF THE OBSTRUCTION SHALL BE 34 INCHES (865 MM) MAXIMUM AND THE DEPTH OF THE OBSTRUCTION SHALL BE 24 INCHES (610 MM) MAXIMUM. THE HIGH SIDE REACH SHALL BE 48 INCHES (1220 MM) MAXIMUM FOR A REACH DEPTH OF 10 INCHES (255 MM) MAXIMUM, WHERE THE REACH DEPTH EXCEEDS 10 INCHES (255 MM). THE HIGH SIDE REACH SHALL BE 46 INCHES (1170 MM) MAXIMUM FOR A REACH DEPTH OF 24 INCHES (610 MM) MAXIMUM.

EXCEPTIONS:

1. THE TOP OF WASHING MACHINES AND CLOTHES DRYERS SHALL BE PERMITTED TO BE 36 INCHES (915 MM) MAXIMUM ABOVE THE FINISH FLOOR.
2. OPERABLE PARTS OF FUEL DISPENSERS SHALL BE PERMITTED TO BE 54 INCHES (1370 MM) MAXIMUM MEASURED FROM THE SURFACE OF THE VEHICULAR WAY WHERE FUEL DISPENSERS ARE INSTALLED ON EXISTING CURBS.

CHILDREN'S REACH RANGES

AGES 3 AND 4	AGES 5 THROUGH 8	AGES 9 THROUGH 12
36 IN (915 MM)	36 IN (915 MM)	36 IN (915 MM)
40 IN (1015 MM)	40 IN (1015 MM)	40 IN (1015 MM)
44 IN (1120 MM)	44 IN (1120 MM)	44 IN (1120 MM)

309 OPERABLE PARTS

309.1 GENERAL. OPERABLE PARTS SHALL COMPLY WITH 309.

309.2 CLEAR FLOOR SPACE. A CLEAR FLOOR OR GROUND SPACE COMPLYING WITH 305 SHALL BE PROVIDED.

309.3 HEIGHT. OPERABLE PARTS SHALL BE PLACED WITHIN ONE OR MORE OF THE REACH RANGES SPECIFIED IN 309.

309.4 OPERATION. OPERABLE PARTS SHALL BE OPERABLE WITH ONE HAND AND SHALL NOT REQUIRE TIGHT GRASPING, PINCHING, OR TWISTING OF THE WRIST. THE FORCE REQUIRED TO ACTIVATE OPERABLE PARTS SHALL BE 5 POUNDS (22.2 N).

EXCEPTION: GAS PUMP NOZZLES SHALL NOT BE REQUIRED TO PROVIDE OPERABLE PARTS THAT HAVE AN ACTIVATING FORCE OF 5 POUNDS (22.2 N) MAXIMUM.

309.5 CLEARANCE REDUCTION. BETWEEN 9 INCHES (230 MM) AND 27 INCHES (685 MM) ABOVE THE FINISH FLOOR OR GROUND, THE KNEE CLEARANCE SHALL BE PERMITTED TO REDUCE AT A RATE OF 1 INCH (25.4 MM) IN DEPTH FOR EACH 6 INCHES (150 MM) IN HEIGHT.

309.6 WIDTH. KNEE CLEARANCE SHALL BE 30 INCHES (760 MM) WIDE MINIMUM.

309.7 KNEE CLEARANCE.

309.7.1 GENERAL. SPACE UNDER AN ELEMENT BETWEEN 9 INCHES (230 MM) AND 27 INCHES (685 MM) ABOVE THE FINISH FLOOR OR GROUND SHALL BE CONSIDERED KNEE CLEARANCE AND SHALL COMPLY WITH 306.3.

309.7.2 MAXIMUM DEPTH. KNEE CLEARANCE SHALL EXTEND 25 INCHES (635 MM) MAXIMUM UNDER AN ELEMENT AT 9 INCHES (230 MM) ABOVE THE FINISH FLOOR OR GROUND.

309.7.3 MINIMUM REQUIRED DEPTH. WHERE KNEE CLEARANCE IS REQUIRED UNDER AN ELEMENT AS PART OF A CLEAR FLOOR SPACE, THE KNEE CLEARANCE SHALL BE 11 INCHES (280 MM) DEEP MINIMUM AT 9 INCHES (230 MM) ABOVE THE FINISH FLOOR OR GROUND, AND 8 INCHES (203 MM) DEEP MINIMUM AT 27 INCHES (685 MM) ABOVE THE FINISH FLOOR OR GROUND.

309.7.4 ADDITIONAL CLEARANCE. SPACE EXTENDING GREATER THAN 6 INCHES (150 MM) BEYOND THE AVAILABLE KNEE CLEARANCE AT 9 INCHES (230 MM) ABOVE THE FINISH FLOOR OR GROUND SHALL NOT BE CONSIDERED TOE CLEARANCE.

309.7.5 WIDTH. TOE CLEARANCE SHALL BE 30 INCHES (760 MM) WIDE MINIMUM.

309.8 KNEE CLEARANCE.

309.8.1 GENERAL. SPACE UNDER AN ELEMENT BETWEEN 9 INCHES (230 MM) AND 27 INCHES (685 MM) ABOVE THE FINISH FLOOR OR GROUND SHALL BE CONSIDERED KNEE CLEARANCE AND SHALL COMPLY WITH 306.3.

309.8.2 MAXIMUM DEPTH. KNEE CLEARANCE SHALL EXTEND 25 INCHES (635 MM) MAXIMUM UNDER AN ELEMENT AT 9 INCHES (230 MM) ABOVE THE FINISH FLOOR OR GROUND.

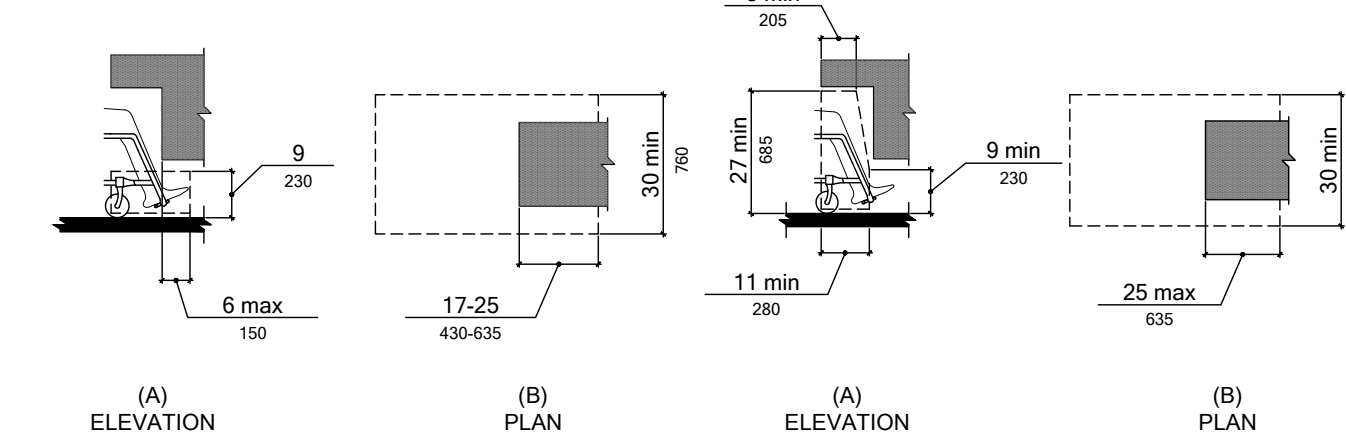
309.8.3 MINIMUM REQUIRED DEPTH. WHERE KNEE CLEARANCE IS REQUIRED UNDER AN ELEMENT AS PART OF A CLEAR FLOOR SPACE, THE KNEE CLEARANCE SHALL BE 11 INCHES (280 MM) DEEP MINIMUM AT 9 INCHES (230 MM) ABOVE THE FINISH FLOOR OR GROUND, AND 8 INCHES (203 MM) DEEP MINIMUM AT 27 INCHES (685 MM) ABOVE THE FINISH FLOOR OR GROUND.

309.8.4 CLEARANCE REDUCTION. BETWEEN 9 INCHES (230 MM) AND 27 INCHES (685 MM) ABOVE THE FINISH FLOOR OR GROUND, THE KNEE CLEARANCE SHALL BE PERMITTED TO REDUCE AT A RATE OF 1 INCH (25.4 MM) IN DEPTH FOR EACH 6 INCHES (150 MM) IN HEIGHT.

309.8.5 WIDTH. KNEE CLEARANCE SHALL BE 30 INCHES (760 MM) WIDE MINIMUM.

CHAPTER 3 : BUILDING BLOCKS

KNEE AND TOE CLEARANCES:



TOE CLEARANCE

307 PROTRUDING OBJECTS

307.1 GENERAL. PROTRUDING OBJECTS SHALL COMPLY WITH 307.

307.2 PROTRUSION LIMITS. OBJECTS WITH LEADING EDGES MORE THAN 27 INCHES (685 MM) AND NOT MORE THAN 80 INCHES (2032 MM) ABOVE THE FINISH FLOOR OR GROUND SHALL PROTRUDE 4 INCHES (100 MM) MAXIMUM HORIZONTALLY INTO THE CIRCULATION PATH.

EXCEPTION: HANDRAILS SHALL BE PERMITTED TO PROTRUDE 4 1/2 INCHES (115 MM) MAXIMUM.

307.3 POST-MOUNTED OBJECTS. FREE-STANDING OBJECTS MOUNTED ON POSTS OR PLYONS SHALL OVERHANG CIRCULATION PATHS 12 INCHES (305 MM) MAXIMUM WHEN LOCATED 27 INCHES (685 MM) MINIMUM AND 80 INCHES (2032 MM) MAXIMUM ABOVE THE FINISH FLOOR OR GROUND, WHERE A SIGN OR OTHER OBSTRUCTION IS MOUNTED BETWEEN POSTS OR PLYONS AND THE CLEAR DISTANCE BETWEEN THE POSTS OR PLYONS IS GREATER THAN 12 INCHES (305 MM). THE LOWEST EDGE OF SUCH SIGN OR OBSTRUCTION SHALL BE 27 INCHES (685 MM) MAXIMUM OR 80 INCHES (2032 MM) MINIMUM ABOVE THE FINISH FLOOR OR GROUND.

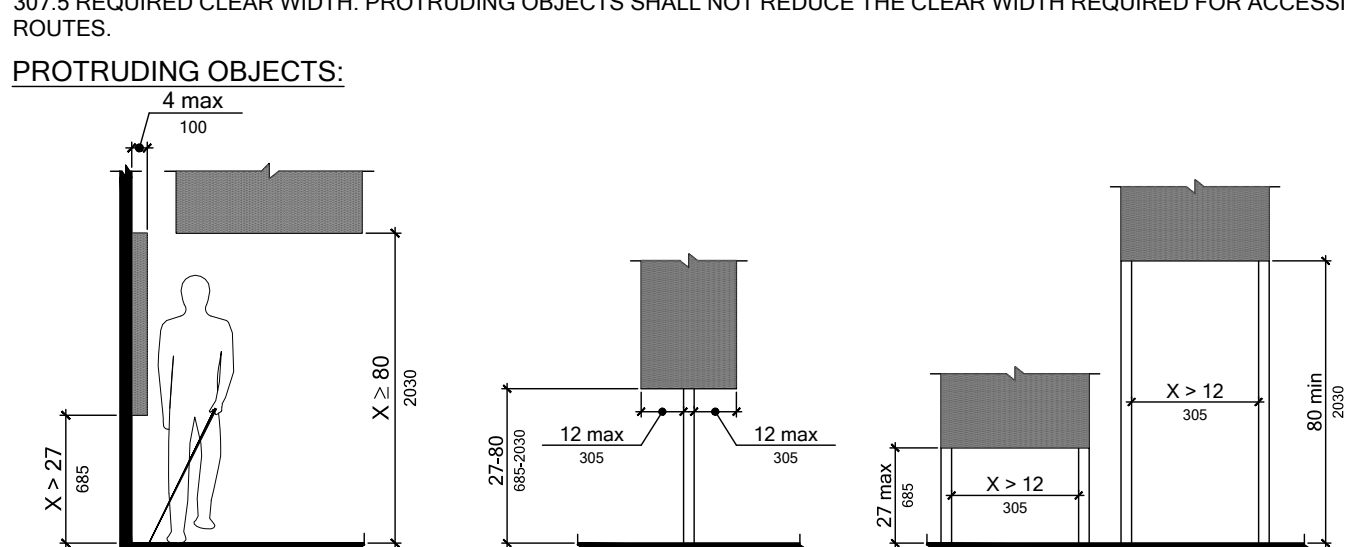
EXCEPTION: THE SLOPING PORTIONS OF HANDRAILS SERVING STAIRS AND RAMPS SHALL NOT BE REQUIRED TO COMPLY WITH 307.3.

307.4 VERTICAL CLEARANCE. VERTICAL CLEARANCE SHALL BE 80 INCHES (2032 MM) HIGH MINIMUM. GUARDRAILS OR OTHER BARRIERS SHALL BE PROVIDED WHERE THE VERTICAL CLEARANCE IS LESS THAN 80 INCHES (2032 MM) HIGH. THE LEADING EDGE OF SUCH GUARDRAIL OR BARRIER SHALL BE LOCATED 27 INCHES (685 MM) MAXIMUM ABOVE THE FINISH FLOOR OR GROUND.

EXCEPTION: DOOR CLOSERS AND DOOR STOPS SHALL BE PERMITTED TO BE 78 INCHES (1980 MM) MINIMUM ABOVE THE FINISH FLOOR OR GROUND.

307.5 REQUIRED CLEAR WIDTH. PROTRUDING OBJECTS SHALL NOT REDUCE THE CLEAR WIDTH REQUIRED FOR ACCESSIBLE ROUTES.

PROTRUDING OBJECTS:



LIMITS OF PROTRUDING OBJECTS

308 REACH RANGES

308.1 GENERAL. REACH RANGES SHALL COMPLY WITH 308.

308.2 FORWARD REACH.

308.2.1 UNOBSTRUCTED. WHERE A FORWARD REACH IS UNOBSTRUCTED, THE HIGH FORWARD REACH SHALL BE 48 INCHES (1220 MM) MAXIMUM AND THE LOW FORWARD REACH SHALL BE 15 INCHES (380 MM) MINIMUM ABOVE THE FINISH FLOOR OR GROUND.

EXCEPTIONS:

1. AN OBSTRUCTION SHALL BE PERMITTED BETWEEN THE CLEAR FLOOR OR GROUND SPACE AND THE ELEMENT WHERE THE DEPTH OF THE OBSTRUCTION IS 10 INCHES (255 MM) MAXIMUM.
2. OPERABLE PARTS OF FUEL DISPENSERS SHALL BE PERMITTED TO BE 54 INCHES (1370 MM) MAXIMUM MEASURED FROM THE SURFACE OF THE VEHICULAR WAY WHERE FUEL DISPENSERS ARE INSTALLED ON EXISTING CURBS.

308.2.2 OBSTRUCTED HIGH REACH. WHERE A HIGH FORWARD REACH IS OVER AN OBSTRUCTION, THE CLEAR FLOOR SPACE SHALL EXTEND BENEATH THE ELEMENT FOR A DISTANCE NOT LESS THAN THE REQUIRED REACH DEPTH OVER THE OBSTRUCTION. THE HIGH FORWARD REACH SHALL BE 48 INCHES (1220 MM) MAXIMUM WHERE THE REACH DEPTH IS 20 INCHES (510 MM) MAXIMUM, WHERE THE REACH DEPTH EXCEEDS 20 INCHES (510 MM). THE HIGH FORWARD REACH SHALL BE 44 INCHES (1120 MM) MAXIMUM AND THE REACH DEPTH SHALL BE 25 INCHES (635 MM) MAXIMUM.

EXCEPTIONS:

1. AN OBSTRUCTION SHALL BE PERMITTED BETWEEN THE CLEAR FLOOR OR GROUND SPACE AND THE ELEMENT WHERE THE DEPTH OF THE OBSTRUCTION IS 10 INCHES (255 MM) MAXIMUM.
2. OPERABLE PARTS OF FUEL DISPENSERS SHALL BE PERMITTED TO BE 54 INCHES (1370 MM) MAXIMUM MEASURED FROM THE SURFACE OF THE VEHICULAR WAY WHERE FUEL DISPENSERS ARE INSTALLED ON EXISTING CURBS.

308.3 SIDE REACH.

308.3.1 UNOBSTRUCTED. WHERE A CLEAR FLOOR OR GROUND SPACE ALLOWS A PARALLEL APPROACH TO AN ELEMENT AND THE SIDE REACH IS UNOBSTRUCTED, THE HIGH SIDE REACH SHALL BE 48 INCHES (1220 MM) MAXIMUM AND THE LOW SIDE REACH SHALL BE 15 INCHES (380 MM) MINIMUM ABOVE THE FINISH FLOOR OR GROUND.

EXCEPTIONS:

1. AN OBSTRUCTION SHALL BE PERMITTED BETWEEN THE CLEAR FLOOR OR GROUND SPACE AND THE ELEMENT WHERE THE DEPTH OF THE OBSTRUCTION IS 10 INCHES (255 MM) MAXIMUM.
2. OPERABLE PARTS OF FUEL DISPENSERS SHALL BE PERMITTED TO BE 54 INCHES (1370 MM) MAXIMUM MEASURED FROM THE SURFACE OF THE VEHICULAR WAY WHERE FUEL DISPENSERS ARE INSTALLED ON EXISTING CURBS.

308.3.2 OBSTRUCTED HIGH REACH. WHERE A CLEAR FLOOR OR GROUND SPACE ALLOWS A PARALLEL APPROACH TO AN ELEMENT AND THE HIGH SIDE REACH IS OVER AN OBSTRUCTION, THE HEIGHT OF THE OBSTRUCTION SHALL BE 34 INCHES (865 MM) MAXIMUM AND THE DEPTH OF THE OBSTRUCTION SHALL BE 24 INCHES (610 MM) MAXIMUM. THE HIGH SIDE REACH SHALL BE 48 INCHES (1220 MM) MAXIMUM FOR A REACH DEPTH OF 10 INCHES (255 MM) MAXIMUM, WHERE THE REACH DEPTH EXCEEDS 10 INCHES (255 MM). THE HIGH SIDE REACH SHALL BE 46 INCHES (1170 MM) MAXIMUM FOR A REACH DEPTH OF 24 INCHES (610 MM) MAXIMUM.

EXCEPTIONS:

1. THE TOP OF WASHING MACHINES AND CLOTHES DRYERS SHALL BE PERMITTED TO BE 36 INCHES (915 MM) MAXIMUM ABOVE THE FINISH FLOOR.
2. OPERABLE PARTS OF FUEL DISPENSERS SHALL BE PERMITTED TO BE 54 INCHES (1370 MM) MAXIMUM MEASURED FROM THE SURFACE OF THE VEHICULAR WAY WHERE FUEL DISPENSERS ARE INSTALLED ON EXISTING CURBS.

CHILDREN'S REACH RANGES

AGES 3 AND 4	AGES 5 THROUGH 8	AGES 9 THROUGH 12
36 IN (915 MM)	36 IN (915 MM)	36 IN (915 MM)
40 IN (1015 MM)	40 IN (1015 MM)	40 IN (1015 MM)
44 IN (1120 MM)	44 IN (1120 MM)	44 IN (1120 MM)

309 OPERABLE PARTS

309.1 GENERAL. OPERABLE PARTS SHALL COMPLY WITH 309.

309.2 CLEAR FLOOR SPACE. A CLEAR FLOOR OR GROUND SPACE COMPLYING WITH 305 SHALL BE PROVIDED.

309.3 HEIGHT. OPERABLE PARTS SHALL BE PLACED WITHIN ONE OR MORE OF THE REACH RANGES SPECIFIED IN 309.

309.4 OPERATION. OPERABLE PARTS SHALL BE OPERABLE WITH ONE HAND AND SHALL NOT REQUIRE TIGHT GRASPING, PINCHING, OR TWISTING OF THE WRIST. THE FORCE REQUIRED TO ACTIVATE OPERABLE PARTS SHALL BE 5 POUNDS (22.2 N).

EXCEPTION: GAS PUMP NOZZLES SHALL NOT BE REQUIRED TO PROVIDE OPERABLE PARTS THAT HAVE AN ACTIVATING FORCE OF 5 POUNDS (22.2 N) MAXIMUM.

309.5 CLEARANCE REDUCTION. BETWEEN 9 INCHES (230 MM) AND 27 INCHES (685 MM) ABOVE THE FINISH FLOOR OR GROUND, THE KNEE CLEARANCE SHALL BE PERMITTED TO REDUCE AT A RATE OF 1 INCH (25.4 MM) IN DEPTH FOR EACH 6 INCHES (150 MM) IN HEIGHT.

309.6 WIDTH. KNEE CLEARANCE SHALL BE 30 INCHES (760 MM) WIDE MINIMUM.

309.7 KNEE CLEARANCE.

309.7.1 GENERAL. SPACE UNDER AN ELEMENT BETWEEN 9 INCHES (230 MM) AND 27 INCHES (685 MM) ABOVE THE FINISH FLOOR OR GROUND SHALL BE CONSIDERED KNEE CLEARANCE AND SHALL COMPLY WITH 306.3.

309.7.2 MAXIMUM DEPTH. KNEE CLEARANCE SHALL EXTEND 25 INCHES (635 MM) MAXIMUM UNDER AN ELEMENT AT 9 INCHES (230 MM) ABOVE THE FINISH FLOOR OR GROUND.

309.7.3 MINIMUM REQUIRED DEPTH. WHERE KNEE CLEARANCE IS REQUIRED UNDER AN ELEMENT AS PART OF A CLEAR FLOOR SPACE, THE KNEE CLEARANCE SHALL BE 11 INCHES (280 MM) DEEP MINIMUM AT 9 INCHES (230 MM) ABOVE THE FINISH FLOOR OR GROUND, AND 8 INCHES (203 MM) DEEP MINIMUM AT 27 INCHES (685 MM) ABOVE THE FINISH FLOOR OR GROUND.

309.7.4 ADDITIONAL CLEARANCE. SPACE EXTENDING GREATER THAN 6 INCHES (150 MM) BEYOND THE AVAILABLE KNEE CLEARANCE AT 9 INCHES (230 MM) ABOVE THE FINISH FLOOR OR GROUND SHALL NOT BE CONSIDERED TOE CLEARANCE.

309.7.5 WIDTH. TOE CLEARANCE SHALL BE 30 INCHES (760 MM) WIDE MINIMUM.

309.8 KNEE CLEARANCE.

309.8.1 GENERAL. SPACE UNDER AN ELEMENT BETWEEN 9 INCHES (230 MM) AND 27 INCHES (685 MM) ABOVE THE FINISH FLOOR OR GROUND SHALL BE CONSIDERED KNEE CLEARANCE AND SHALL COMPLY WITH 306.3.

309.8.2 MAXIMUM DEPTH. KNEE CLEARANCE SHALL EXTEND 25 INCHES (635 MM) MAXIMUM UNDER AN ELEMENT AT 9 INCHES (230 MM) ABOVE THE FINISH FLOOR OR GROUND.

309.8.3 MINIMUM REQUIRED DEPTH. WHERE KNEE CLEARANCE IS REQUIRED UNDER AN ELEMENT AS PART OF A CLEAR FLOOR SPACE, THE KNEE CLEARANCE SHALL BE 11 INCHES (280 MM) DEEP MINIMUM AT 9 INCHES (230 MM) ABOVE THE FINISH FLOOR OR GROUND, AND 8 INCHES (203 MM) DEEP MINIMUM AT 27 INCHES (685 MM) ABOVE THE FINISH FLOOR OR GROUND.

309.8.4 CLEARANCE REDUCTION. BETWEEN 9 INCHES (230 MM) AND 27 INCHES (685 MM) ABOVE THE FINISH FLOOR OR GROUND, THE KNEE CLEARANCE SHALL BE PERMITTED TO REDUCE AT A RATE OF 1 INCH (25.4 MM) IN DEPTH FOR EACH 6 INCHES (150 MM) IN HEIGHT.

309.8.5 WIDTH. KNEE CLEARANCE SHALL BE 30 INCHES (760 MM) WIDE MINIMUM.

CHAPTER 4 : ACCESSIBLE ROUTES