

01 FLOOR PLAN
 Scale: 1/4" = 1'-0"
 PLAN NORTH TRUE NORTH

NOTES - NEW WORK PLAN

- THE ARCHITECTURAL DRAWINGS SHOULD BE USED WITH AND IN CONJUNCTION WITH THE CIVIL, STRUCTURAL, MEP, FIRE PROTECTION DRAWINGS AND SPECIFICATIONS. THE GENERAL CONTRACTOR IS RESPONSIBLE FOR ALL COORDINATION BETWEEN THE DRAWINGS. DISCREPANCIES SHOULD BE BROUGHT TO THE ATTENTION OF GFF.
- THE GENERAL CONTRACTOR IS ADVISED THAT THE AVAILABLE SPACE FOR ROUTING ALL ELECTRICAL, MECHANICAL, PLUMBING, FIRE PROTECTION AND COMMUNICATIONS PIPING CONDUIT, TRAYS AND DUCTWORK MAY BE MINIMAL IN MANY LOCATIONS. THE GENERAL CONTRACTOR SHALL COORDINATE ALL OF THE TRADES WORK.
- VERIFY FIELD CONDITIONS AND LOCATIONS OF ALL PLUMBING, DUCTS, STRUCTURAL ELEMENTS, ETC., AND ARRANGE & MODIFY NON-VISIBLE ITEMS TO ENSURE ADEQUATE CLEARANCES FOR PARTITION LAYOUT SHOWN.
- ALL PENETRATIONS OF FIRE RATED ASSEMBLIES SHALL BE FIRE BLOCKED AND SEALED PER UL APPROVED METHODS.
- THE GENERAL CONTRACTOR IS TO ENSURE THE CONTINUITY OF NEW OR EXISTING FIRE-RATED CONSTRUCTION.
- ALL MANUFACTURER'S NAME, TRADEMARK, LOGOS, ETC SHALL NOT BE VISIBLE TO THE PUBLIC, UNLESS REQUIRED BY THE BUILDING CODE.
- ALL WALL MOUNTED ITEMS SUCH AS MILLWORK, FURNITURE, SIGNAGE, OWNER PROVIDED EQUIPMENT, ETC SHALL BE REINFORCED WITH BRACING, BLOCKING, AND/OR STRUCTURE AS REQUIRED.
- THE GENERAL CONTRACTOR SHALL BE RESPONSIBLE FOR DETERMINING THE SUPPORT REQUIRED TO MAINTAIN THE INTEGRITY OF THE WALL AND THE SECURITY OF THE ITEM MOUNTED.
- THE GENERAL CONTRACTOR SHALL COORDINATE THE PLACEMENT OF ALL BLOCKING PRIOR TO CLOSING OF WALLS. ALL BLOCKING SHALL BE FIRE RETARDANT TREATED. USE OF COMBUSTIBLE MATERIALS ABOVE THE CEILING IS NOT PERMITTED.
- THE GENERAL CONTRACTOR TO COORDINATE ALL MILLWORK WITH FURNITURE, EQUIPMENT, LIGHTING, AUDIOVISUAL, ELECTRICAL DEVICES, DATA DEVICES, AND DRYWALL SURROUNDINGS.
- THE GENERAL CONTRACTOR TO USE APPROVED FURNITURE INSTALLATION PLAN TO DETERMINE FINAL LOCATION OF ALL POWER, VOICE, DATA, AND OTHER DEVICES SERVING FURNITURE.
- THE GENERAL CONTRACTOR SHALL COORDINATE AND CONFIRM ALL FIRE EXTINGUISHER LOCATIONS WITH GFF IN THE FIELD PRIOR TO FRAMING. COMPLY WITH ALL APPLICABLE CODES, INDUSTRY STANDARDS, ETC.
- THE GENERAL CONTRACTOR SHALL COORDINATE PROVIDING A THICKEN PARTITION AT FEC, AS REQUIRED.
- PRIOR TO COMMENCEMENT OF CONSTRUCTION, THE GENERAL CONTRACTOR SHALL MARK-OUT PARTITION LAYOUT FOR APPROVAL BY GFF.
- DO NOT SCALE DRAWINGS. WRITTEN DIMENSIONS GOVERN. IN CASE OF CONFLICT, NOTIFY GFF FOR WRITTEN CLARIFICATION PRIOR TO PROCEEDING.
- DIMENSIONS SHOWN AS "V.I.F." SHALL BE VERIFIED IN THE FIELD BY LAYING OUT THE PARTITIONS. THE GENERAL CONTRACTOR SHALL NOTIFY GFF OF ANY DISCREPANCY IN DIMENSIONS PRIOR TO PROCEEDING WITH WORK IN THAT AREA.
- DIMENSIONS MARKED "HOLD" SHALL BE MAINTAINED AND SHALL ALLOW FOR THICKNESS OF FINISHES, INCLUDING CARPET, VCT, MILLWORK, ETC. THE GENERAL CONTRACTOR SHALL NOT ADJUST DIMENSION WITHOUT WRITTEN INSTRUCTIONS FROM GFF.
- ALL WALLS TO BE CONSTRUCTED AT 90° ANGLES U.N.O.
- ALL DIMENSIONS ARE FROM FINISH FACE, U.N.O.
- ALL NEW PARTITIONS ADJOINING EXISTING CONSTRUCTION IN THE SAME PLANE SHALL BE FLUSH WITH NO VISIBLE JOINTS, U.N.O.
- ALL DOORS SHALL BE MOUNTED 6" FROM THE INTERIOR FACE OF WALL TO THE EDGE OF THE DOOR OPENING, U.N.O.
- THE GENERAL CONTRACTOR SHALL MODIFY AND/OR EXTEND THE EXISTING FIRE ALARM AND FIRE SPRINKLER SYSTEMS AS NEEDED FOR NEW CONSTRUCTION. THE GENERAL CONTRACTOR SHALL VERIFY REQUIREMENTS WITH LANDLORD.
- THE GENERAL CONTRACTOR SHALL COORDINATE CONSTRUCTION MATERIAL DELIVERY TIMES WITH LANDLORD TO MINIMIZE INTERFERENCE WITH OTHER TENANTS.

KEY NOTES - NEW WORK PLAN

- EXISTING SKYLIGHTS ABOVE, TYPICAL.
- THE INTENT OF THE COLUMN / PIPE WRAP IS TO FRAME AREA TIGHT TO COLUMN, TYP.
- ELFA VENTILATED WIRE SHELVING (16" X 36") ON ELFA VENTILATED SHELF BRACKETS AND VERTICAL SUPPORTS. PROVIDE TWO (2) SECTIONS 8" HEIGHT WITH SIX (6) SHELVES EACH. PROVIDE BLOCKING IN WALL AS NECESSARY. CONFIRM QUANTITY OF SHELVES AND ANY ACCESSORIES WITH TENANT.
- ELFA VENTILATED WIRE SHELVING (16" X 24") ON ELFA VENTILATED SHELF BRACKETS AND VERTICAL SUPPORTS. PROVIDE ONE SECTION 5" HEIGHT WITH FOUR (4) SHELVES. PROVIDE BLOCKING IN WALL AS NECESSARY. CONFIRM QUANTITY OF SHELVES AND ANY ACCESSORIES WITH TENANT.

LEGEND - NEW WORK PLAN

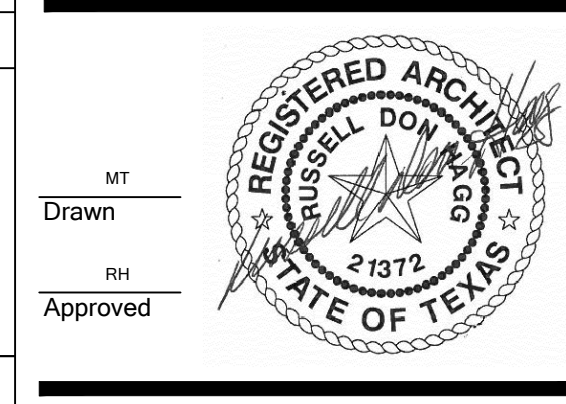
SYMBOL	DESCRIPTION	SYMBOL	DESCRIPTION
	AREA NOT IN SCOPE, UNO		EXISTING DOOR TO REMAIN
	ROOM NAME AND NUMBER		DOOR NUMBER HARDWARE SET DOOR TYPE
	EXISTING PARTITION		NEW DOOR
	NEW PARTITION		EXISTING RECESSED FIRE EXTINGUISHER CABINET
	PARTITION TYPE, TO BE TYPE A-4, UNO		ELEVATION MARKER
	DETAIL MARKER		ALIGN ELEMENTS

LEGEND - RATED WALL ASSEMBLIES

REFERENCE PARTITION TYPE NOTED ON PLAN FOR COMPLETE INFORMATION ON FIRE RATED ASSEMBLY.	
	SMOKE PARTITION
	1-HOUR RATED WALL
	2-HOUR RATED WALL

No. Date Revision

No.	Date	Revision



FLOOR PLAN

Project No. 17211.00
 Date 01.12.18

**FUSION MEDICAL AESTHETICS
 THE FOUNDRY: WHEELHOUSE II
 2625 WHITMORE STREET, LEASE SPACE E
 FORT WORTH, TX 76107**