

### GENERAL NOTES - PARTITIONS:

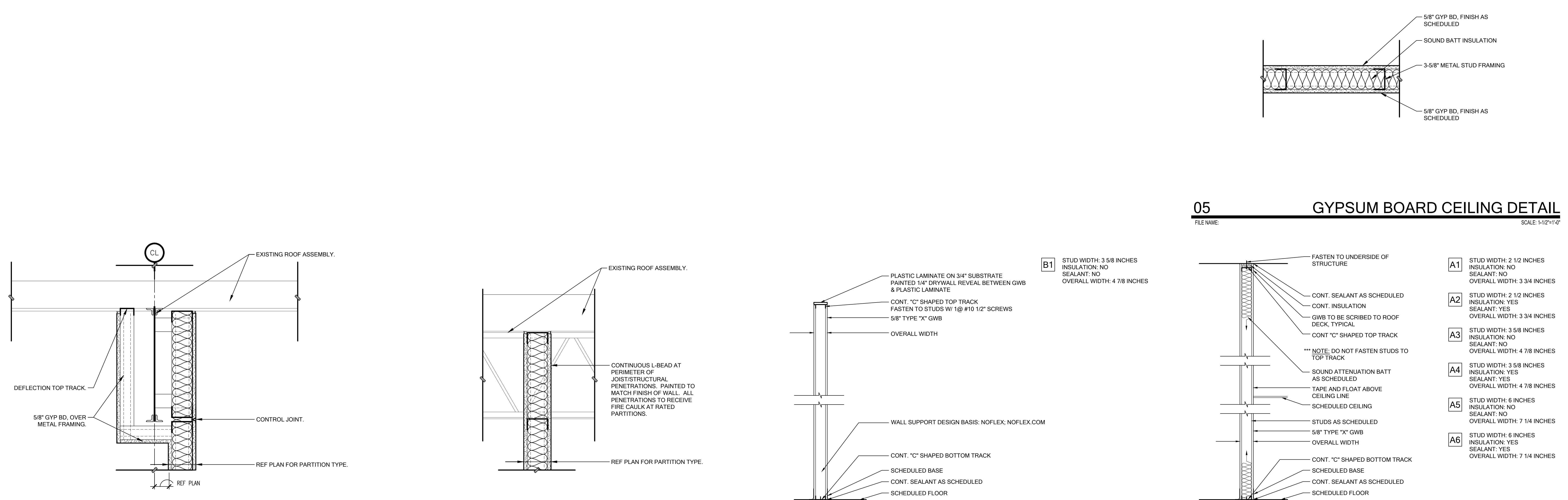
1. ALL INTERIOR PARTITIONS ARE INDICATED ON THE FLOOR PLANS. SEE FLOOR PLANS FOR LOCATIONS OF FIRE RATED PARTITIONS.
2. PARTITION REQUIREMENTS SHOWN ARE CONSIDERED A MINIMUM STANDARD. WHERE CONDITIONS OF THE WORK EXCEED LIMITS RECOMMENDED BY MANUFACTURER, PROVIDE NEXT LARGER SIZE STUD IN GAUGE AND SPACING AS NEEDED.
3. ALL MISCELLANEOUS Furring TO BE 5/8" TYPE "X" GYPSUM BOARD ON 2 1/2" METAL STUDS AT 16 INCHES O.C., UNLESS NOTED OTHERWISE.
4. PROVIDE CONTROL JOINTS AT GYPSUM BOARD PARTITIONS AS REQUIRED BY THE CURRENT EDITION OF THE GYPSUM CONSTRUCTION HANDBOOK. ADVISE ARCHITECT OF PROPOSED LOCATIONS OF CONTROL JOINTS PRIOR TO INSTALLATION.
5. PROVIDE BLOCKING OR BACKER MATERIALS FOR ATTACHMENT OR MOUNTING OF WALL HUNG ITEMS, EQUIPMENT OR FURNITURE.
6. PERFORMANCE REQUIREMENTS:
  - A. DESIGN AND INSTALL ASSEMBLIES TO WITHSTAND LATERAL LOADING (AIR PRESSURE) OF 5 PSF WITH DEFLECTION LIMIT NOT MORE THAN L/240 OF PARTITION HEIGHT FOR GYPSUM BOARD.
  - B. ASSEMBLIES WITH TILE, MASONRY OR OTHER HARD SURFACE FINISHES: DECREASE DEFLECTION LIMIT TO L/360.
  - C. ATRIUMS, LOBBIES, SERVICE CORRIDORS, EXITS AND ELEVATOR LOBBIES: INCREASE LATERAL LOADING TO 10 PSF. INCREASE DEFLECTION LIMIT TO L/360.
7. GYPSUM BOARD PARTITIONS: PROVIDE 5/8" TYPE "X" GYPSUM BOARD, UNLESS NOTED OTHERWISE.
  - A. RESTROOMS, LOCKER ROOMS, KITCHENS, UTILITY ROOMS, ETC: PROVIDE 5/8" TYPE "X" WATER RESISTANT GYPSUM BOARD.
  - B. WET AREAS, SHOWERS AND AREAS TO RECEIVE FULL-HEIGHT TILE FINISHES: PROVIDE TILE BACKER BOARD.
8. FIRE RATED PARTITIONS: COMPLY WITH REQUIREMENTS OF DESIGNATED UL ASSEMBLY AS LISTED IN UL FIRE RESISTANCE DIRECTORY. ENSURE CONTINUITY OF FIRE RATED ENCLOSURES.
  - A. WHEN FIRE RATED PARTITIONS INTERSECT WITH NON-RATED PARTITIONS, CARRY FIRE RATED ASSEMBLY THROUGH NON-RATED CONSTRUCTION.
  - B. CUTOUPS FOR ELECTRIC DEVICES ON OPPOSITE SIDES OF PARTITION IN SAME STUD SPACE, WITHIN 24" NOT ALLOWED UNLESS WALL OPENING PROTECTIVE MATERIAL IS USED PRIOR TO WALL CLOSURE (HILTI CP-617, CP-617L, FIRE STOP PUTTY PAD).
9. FIRESTOPPING AND FIRE SAFING: PROVIDE UL LISTED PENETRATION AND JOINT SYSTEMS AT PENETRATIONS AND TERMINATIONS IN ACCORDANCE WITH SECTION 07500.
10. FULL HEIGHT PARTITIONS: PROVIDE FOR DEFLECTION OF STRUCTURE AT TERMINATION OF PARTITION WITH STRUCTURE ABOVE. PROVIDE CONTINUOUS LONG LEG TRACK & SLIP JOINT AT HEAD OF PARTITIONS WHICH EXTEND TO OR ARE BRACED TO DECK OR OTHER STRUCTURAL ELEMENTS. DO NOT ATTACH STUDS TO HEAD TRACK. CUT GYPSUM BOARD SHORT TO ALLOW FOR DEFLECTION.
11. PLUMBING CHASE PARTITIONS:
  - A. SIDE WITH PLUMBING FIXTURES: PROVIDE NEXT LARGER SIZE STUD IN GAUGE AND SPACING AS REQUIRED TO PROPERLY SUPPORT FIXTURES.
  - B. BRACING: PROVIDE BRACING BETWEEN STUDS ON OPPOSITE SIDES AS RECOMMENDED BY MANUFACTURER.
  - C. FIRE RATED PARTITIONS: MAINTAIN FIRE RATED CONSTRUCTION. ENSURE CONTINUITY OF FIRE RATED ENCLOSURES.
12. MECHANICAL CHASE PARTITIONS:
  - A. USE SEALANT AT ALL WALLS FORMING CHASES USED FOR AIR TRANSFER TO MAINTAIN AIRTIGHTNESS OF CHASE.
  - B. FIRE RATED PARTITIONS: MAINTAIN FIRE RATED CONSTRUCTION. ENSURE CONTINUITY OF FIRE RATED ENCLOSURES.

### INTERIOR METAL STUD SCHEDULE:

NON-STRUCTURAL - COMPOSITE PARTITIONS									
STUD MEMBER	STUD SPACING				STUD MEMBER	STUD SPACING			
	5 pcf L/240	5 pcf L/360	10 pcf L/360	10 pcf L/360		5 pcf L/240	5 pcf L/360	10 pcf L/360	10 pcf L/360
250S125-33	12"	15'-8"	13'-8"	10'-10"	600S125-33	12"	28'-1"	24'-6"	19'-5"
	16"	14'-3"	12'-5"	9'-10"		16"	25'-6"	22'-3"	17'-8"
250S125-27	12"	15'-4"	13'-5"	10'-11"	600S125-27	12"	26'-9"	23'-5"	18'-7"
	16"	13'-11"	12'-5"	9'-11"		16"	24'-4"	21'-3"	16'-10"
250S125-18	12"	14'-2"	12'-9"	10'-2"	600S125-18	12"	22'-9"	19'-11"	15'-10"
	16"	12'-10"	11'-7"	9'-0"		16"	20'-1"	18'-1"	14'-2"
362S125-33	12"	19'-2"	16'-9"	13'-4"	362S125-27	12"	18'-2"	15'-10"	12'-6"
	16"	17'-5"	15'-3"	11'-11"		16"	16'-6"	14'-5"	11'-1"
362S125-18	12"	18'-2"	15'-10"	12'-6"	12"	16'-8"	14'-7"	11'-6"	
	16"	15'-2"	13'-3"	10'-4"	16"	13'-2"	11'-6"	8'-11"	

NOTES:

1. DATA IS FROM THE STEEL STUD MANUFACTURERS ASSOCIATION (SSMA) PRODUCT TECHNICAL GUIDE AND IS FOR REFERENCE ONLY. REFER TO USS CONSTRUCTION HANDBOOK AND THE SSMA PRODUCT TECHNICAL GUIDE FOR CURRENT DESIGN REQUIREMENTS.
2. VALUES IN TABLE ABOVE ARE BASED ON COMPOSITE WALL SHEATHED ON BOTH SIDES FULL HEIGHT WITH 5/8" GYPSUM WALLBOARD.
3. FOR CEILINGS AND SOFFITS, REFER TO THE SSMA PRODUCT TECHNICAL GUIDE FOR ALLOWABLE INTERIOR SPANS.
4. REFER TO THE CURRENT GYPSUM CONSTRUCTION HANDBOOK AND CURRENT SSMA CATALOG FOR STANDARD DETAILS FOR OPENINGS, FRAMING, BACKING, BRIDGING, STRAPPING AND BRACING.



INTERIORS



3300 West 7th Street, Suite 110  
Fort Worth, Texas 76107 | 817.303.1500

2806 Fairmount Street, Suite 300  
Dallas, Texas 75201 | 214.303.1500

FUSION MEDICAL AESTHETICS  
THE FOUNDRY: WHEELHOUSE II

2625 WHITMORE STREET, LEASE SPACE E  
FORT WORTH, TX 76107

No.	Date	Revision



**PARTITION TYPES,  
DETAILS & SCHEDULES**

Project No. 17211.00  
Date 01.12.18