

ELECTRICAL SPECIFICATIONS:

- PERFORM ALL WORK IN ACCORDANCE WITH ALL APPLICABLE NATIONAL AND LOCAL CODES AND CODE AUTHORITIES.
- SUBMIT SHOP DRAWINGS FOR ALL MATERIAL FURNISHED UNDER THIS DIVISION OF WORK. PROVIDE A MINIMUM OF SIX COPIES.
- SECURE AND PAY FOR ALL NECESSARY PERMITS, LICENSES AND INSPECTIONS REQUIRED BY LAW FOR THE COMPLETION OF THE WORK. SECURE AND PAY FOR ALL CERTIFICATES OF APPROVAL THAT ARE REQUIRED AND DELIVER THEM TO THE ARCHITECT BEFORE FINAL ACCEPTANCE OF THE WORK.
- IDENTIFY ELECTRICAL EQUIPMENT USING LAMINATED THREE-PLY, ENGRAVED, PLASTIC NAMEPLATES WITH BLACK SURFACE AND WHITE INTERIOR CORE, AT LEAST 1/16 INCH THICK. ATTACH NAMEPLATES USING CHROMIUM PLATED SCREWS. PROVIDE NAMEPLATES FOR PANELBOARDS, TRANSFORMERS AND DISCONNECT SWITCHES.
- EXAMINE THE PROJECT SITE AND MAKE ALLOWANCES IN THE BID TO ACCOMMODATE EXISTING CONDITIONS.
- ALL MATERIAL SHALL BE NEW, UNLISTED, AND FREE FROM DEFECTS, UNLESS EXISTING MATERIAL IS SPECIFICALLY SHOWN TO BE REUSED. INSTALL ALL MATERIAL IN ACCORDANCE WITH GOOD WORKMANSHIP STANDARDS.
- SUBSTITUTIONS OF SPECIFIED MATERIAL SHALL BE APPROVED IN WRITING BY THE ARCHITECT PRIOR TO BIDDING.
- PROVIDE FACTORY FINISH ON ALL MATERIAL FURNISHED TO THE JOBSITE AND TOUCH UP FINISHES WHICH HAVE BEEN DAMAGED.
- PROVIDE TYPEWRITTEN DIRECTORIES IN ALL NEW PANELBOARDS. PROVIDE NEW TYPEWRITTEN DIRECTORIES FOR EXISTING PANELBOARDS IN WHICH THE LOADS SERVED HAVE BEEN CHANGED BY THE SCOPE OF THIS PROJECT.
- PROVIDE A COPY OF AS-BUILT PLANS TO THE OWNER UPON COMPLETION OF PROJECT.
- MAINTAIN OPERATIONS OF ALL BUILDING SYSTEMS DURING CONSTRUCTION. COORDINATE ALL SHUTDOWNS OR SYSTEM DISRUPTIONS WITH OWNER SEVEN DAYS IN ADVANCE.
- USE EMT CONDUIT WITH SET-SCREW TYPE FITTINGS AND INSULATED BUSHINGS, 3/4 INCH MINIMUM, FOR INTERIOR, CONCEALED WORK AND EXPOSED WORK ABOVE SWITCH HEIGHT.
- USE RIGID GALVANIZED STEEL CONDUIT FOR EXPOSED WORK BELOW SWITCH HEIGHT.
- USE SCHEDULE 40 PVC CONDUIT, 3/4 INCH MINIMUM, FOR ALL UNDERGROUND WORK. PROVIDE PVC COATED, RIGID GALVANIZED STEEL BENDS.
- USE 4" SQUARE (MINIMUM) GALVANIZED STEEL OUTLET BOXES.
- USE COPPER CONDUCTORS, TYPE THHN INSULATION, OR APPROVED EQUIVALENT. USE SOLID CONDUCTORS FOR #10 AWG AND SMALLER AND STRANDED CONDUCTORS FOR #8 AWG AND LARGER. ALUMINUM CONDUCTORS ARE NOT ACCEPTABLE.
- PROVIDE CONNECTIONS TO ALL EQUIPMENT FURNISHED UNDER THIS CONTRACT AND BY OTHER DIVISIONS OF THE WORK. MAKE ALL CONNECTIONS AS RECOMMENDED BY THE MANUFACTURER AND AS REQUIRED BY APPLICABLE CODES.
- CONNECT ALL MOTORS AND TRANSFORMERS WITH FLEXIBLE CONDUIT SUCH THAT VIBRATION IS NOT TRANSMITTED TO THE STRUCTURE. USE LIQUID TIGHT FLEXIBLE CONDUIT IN DAMP AND WET LOCATIONS.
- MAKE SPLICES AND PROVIDE WORK AS REQUIRED TO MAINTAIN CIRCUIT CONTINUITY TO EXISTING DEVICES AND EQUIPMENT TO REMAIN IN SERVICE.
- REMOVE ALL EXISTING CONDUCTORS, CABLES AND EXPOSED CONDUIT RENDERED UNUSABLE BY THE SCOPE OF THIS PROJECT BACK TO THE SOURCE OF SUPPLY.
- PROVIDE SPECIFICATION GRADE WIRING DEVICES EQUAL TO HUBBELL 1231 FOR SWITCHES AND HUBBELL 5262 FOR RECEPTACLES. PROVIDE COVERPLATES FOR ALL WIRING DEVICES AND COMMUNICATIONS OUTLETS. INSTALL RECEPTACLES AT +18 INCHES AND SWITCHES AT +48" UNLESS NOTED OTHERWISE. INSTALL DEVICES IDENTIFIED WITH AN "X" SIX INCHES ABOVE THE COUNTER BACKSPLASH.
- PROVIDE FUSIBLE CLASS "R" DISCONNECT SWITCHES OF AMPERE RATING AS REQUIRED OR AS NOTED ON THE DRAWINGS. FURNISH HEAVY DUTY, QUICK MAKE, QUICK BREAK, THREE POLE SWITCHES, THREE POLE SWITCHES, USE NEMA 1 ENCLOSURES INDOORS AND NEMA 3R ENCLOSURES OUTDOORS. DISCONNECT SWITCHES SHALL BE OF THE SAME MANUFACTURER AS THE PANELBOARDS.
- FUSES SHALL BE CURRENT LIMITING, WITH 200,000 R.M.S. SYMMETRICAL AMPERES INTERRUPTING RATING AND SHALL BE UNLISTED. ALL FUSES SHALL BE OF THE SAME MANUFACTURER. FUSES 600 AMPERES AND SMALLER SHALL BE CLASS RK1, DUAL ELEMENT EQUAL TO BUSSMANN LPS-RK. FUSES IN MOTOR CIRCUITS SHALL BE SIZED AS FOLLOWS: FUSES FOR NOT LESS THAN 1.15 SERVICE FACTOR MOTORS SHALL HAVE AN AMPERE RATING 125 PERCENT OF MOTOR FULL LOAD CURRENT OR NEXT HIGHER FUSE RATING. FUSES FOR 1.0 SERVICE FACTOR MOTORS SHALL HAVE AN AMPERE RATING 115 PERCENT OF MOTOR FULL LOAD CURRENT OF NEXT HIGHER FUSE RATING.
- CIRCUIT BREAKERS SHALL BE BOLT-ON THERMAL MAGNETIC TYPE WITH NUMBER OF POLES AND AMPERE RATING AS SHOWN ON PLANS. CIRCUIT BREAKERS SHALL BE CAPABLE OF INTERRUPTING THE FAULT CURRENT AVAILABLE TO THEM WITHOUT THE USE OF SERIES CONNECTED RATINGS WITH UPSTREAM CIRCUIT BREAKERS.
- PROVIDE A GROUND SYSTEM THAT INCLUDES ALL CONNECTIONS AND TESTING OF: GROUND RODS, GROUND CABLES, GROUND BUSES, CONDUITS, FITTINGS, ANCHORS, SUPPORTS, AND OTHER MATERIALS AS REQUIRED FOR A COMPLETE INSTALLATION.
- ALL TELEPHONE AND DATA SYSTEMS CONDUITS ARE ONE INCH UNLESS NOTED OTHERWISE.
- PROVIDE PANELBOARDS WITH FLUSH ENCLOSURE, HINGED LOCKABLE DOOR, COPPER BUSING, FULL SIZE NEUTRAL BUS AND A GROUND BUS. PROVIDE PANELBOARDS WITH AN INTERRUPTING RATING AS INDICATED ON PLANS. PROVIDE CIRCUIT BREAKERS WHICH SIMULTANEOUSLY OPEN ALL POLES ON DOUBLE AND THREE POLE CIRCUIT BREAKERS. PROVIDE SINGLE POLE CIRCUIT BREAKERS SERVING FLUORESCENT LIGHTING LOADS WITH SMD MARKING. PROVIDE PANELBOARDS AS MANUFACTURED BY GENERAL ELECTRIC, SIEMENS OR SQUARE D.

ELECTRICAL SYMBOL LIST			
SYMBOL	DESCRIPTION	SYMBOL	DESCRIPTION
[Symbol]	LED LIGHT FIXTURE - REFER TO NOTE 1	[Symbol]	DUPLEX RECEPTACLE
[Symbol]	TRACK LIGHT FIXTURE	[Symbol]	DUPLEX RECEPTACLE WITH USB PORT
[Symbol]	PENDANT MOUNTED LIGHT FIXTURE	[Symbol]	GFI RECEPTACLE, WP FOR ALL OUTDOOR LOCATIONS
[Symbol]	EMERGENCY/NIGHT LIGHT	[Symbol]	SPECIAL PURPOSE RECEPTACLE
[Symbol]	UNDERCABINET LED LIGHTING	[Symbol]	JUNCTION BOX
[Symbol]	EXIT LIGHT FIXTURES	[Symbol]	MOTOR
[Symbol]	EMERGENCY LIGHTING UNIT WITH 2 LAMPS	[Symbol]	TELEPHONE OUTLET WITH 3/4" C STUBBED INTO CLG
[Symbol]	SINGLE POLE SWITCH	[Symbol]	DATA OUTLET/POINT OF SALE OUTLET WITH 3/4" C STUBBED INTO CLG
[Symbol]	THREE WAY SWITCH	[Symbol]	CEILING MOUNTED SPEAKER
[Symbol]	LOW VOLTAGE SWITCH	[Symbol]	CEILING MOUNTED OCCUPANCY SENSOR
[Symbol]	MOTOR RATED SWITCH	[Symbol]	CEILING MOUNTED VACANCY SENSOR
[Symbol]	VACANCY SENSOR SWITCH	[Symbol]	CEILING MOUNTED DAYLIGHT SENSOR
[Symbol]	208/120 V PANELBOARD	[Symbol]	CEILING MOUNTED POWER PACK
[Symbol]	CONDUIT AND HOMERUN TO PANEL - NOTE 2	[Symbol]	MOUNTED ABOVE COUNTER
[Symbol]	CONDUIT W/ ONE GROUND, 3 PHASE & ONE NEUTRAL	[Symbol]	AFF ABOVE FINISHED FLOOR
[Symbol]	CONDUIT W/ ONE PHASE, ONE NEUTRAL AND ONE GROUND	[Symbol]	GFI GROUND FAULT CIRCUIT INTERRUPTING
[Symbol]	GROUND	[Symbol]	EC ELECTRICAL CONTRACTOR
[Symbol]	NON-FUSED DISCONNECT SWITCH	[Symbol]	MC MECHANICAL CONTRACTOR
[Symbol]	FUSED DISCONNECT SWITCH	[Symbol]	NF NON-FUSIBLE (DISCONNECT)
[Symbol]	DISCONNECT SIZE / POLES / FUSE SIZE	[Symbol]	WP WEATHERPROOF

NOTES:

- LETTER ADJACENT TO FIXTURE DENOTES FIXTURE TYPE. REFER TO FIXTURE SCHEDULE.
- WHEN NO HASH MARKS ARE SHOWN, PROVIDE ONE PHASE, ONE NEUTRAL AND ONE GROUND CONDUCTOR.
- ALL LIGHT FIXTURES ON LIGHTING PLANS ARE TYPE 'A' UNLESS NOTED OTHERWISE.
- SOME OF THESE SYMBOLS AND ABBREVIATIONS MAY NOT APPEAR ON THE DRAWINGS.

COMcheck Software Version 4.0.7.0
Interior Lighting Compliance Certificate

Project Information
 Energy Code: 2015 IECC
 Project Title: Medical Fusion
 Project Type: Medical Fusion Alteration

Construction Site: 2625 Whitmore Street, Fort Worth, TX 76107
Owner/Agent:
Designer/Contractor: Chase Purcell, Baird, Hampton & Brown, 6300 Ridgely Place, Fort Worth, TX 76116, 817.338.1277, cpurcell@bhinc.com

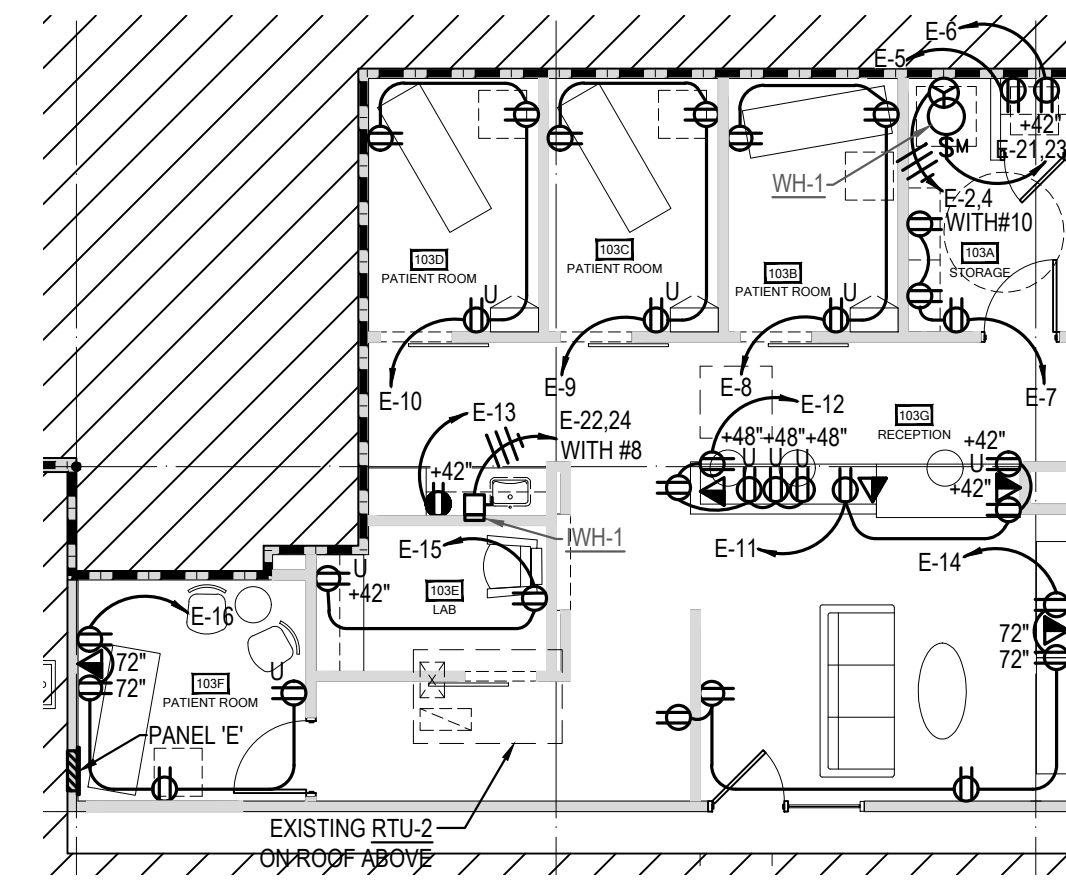
Allowed Interior Lighting Power			
A Area Category	B Floor Area (ft²)	C Allowed Watts / ft²	D Allowed Watts (B X C)
1-Health Care-Clinic	994	0.90	895
		Total Allowed Watts =	895

Proposed Interior Lighting Power				
A Fixture ID : Description / Lamp / Wattage Per Lamp / Ballast	B Lamps/Fixture	C # of Fixtures	D Watt.	E (C X D)
Health Care-Clinic (994 sq.ft.)				
E: E LED Track Light Fixture Other	1	37	18	684
F: F Direct/Indirect LED Strip Other	1	1	54	54
J: J LED Undercabinet Light Other	1	10	7	67
K: K Decorative LED Pendant Other	1	1	9	9
L: L Decorative LED Pendant Other	1	1	9	9
M: M Decorative LED Pendant Other	1	1	9	9
Total Proposed Watts =				832

Interior Lighting PASSES
 Interior Lighting Compliance Statement
 Compliance Statement: The proposed interior lighting alteration project represented in this document is consistent with the building plans, specifications, and other calculations submitted with this permit application. The proposed interior lighting systems have been designed to meet the 2015 IECC requirements for interior lighting systems in section 408.4 and to comply with any applicable mandatory requirements listed in the Inspection Checklist.

Chase Purcell - Electrical Designer
 Name - Title: _____ Signature: _____ Date: 01-10-2018

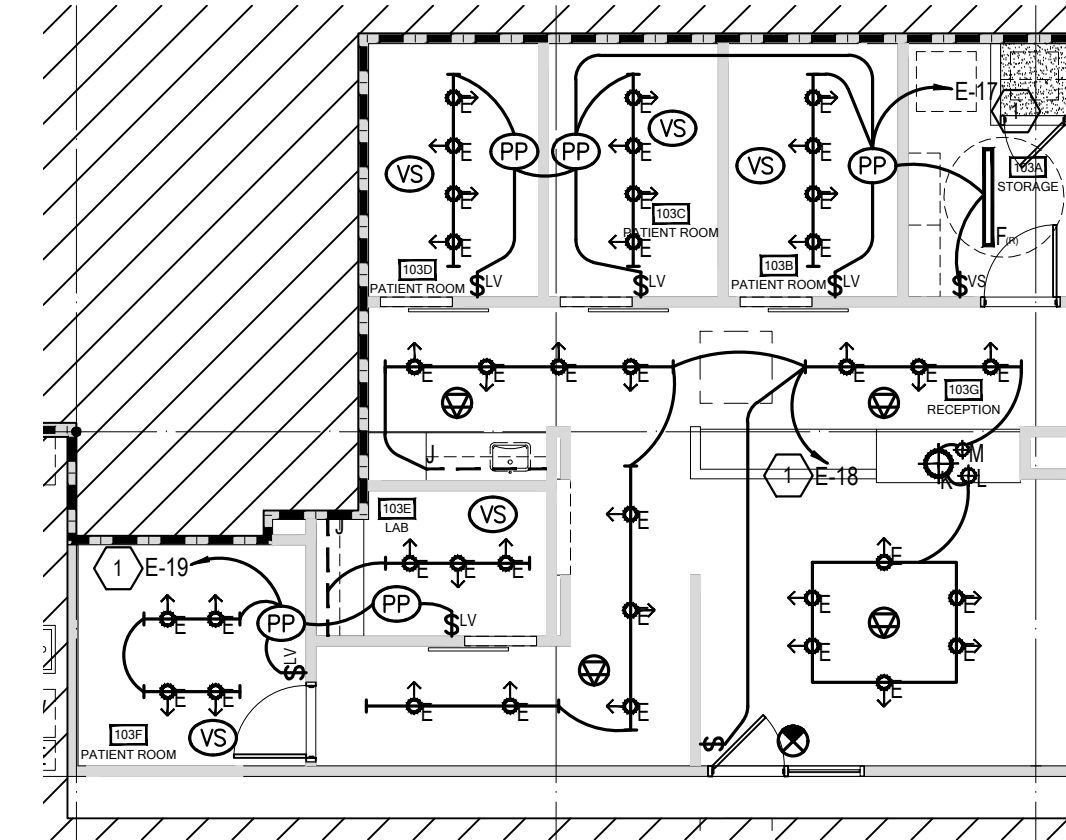
Project Title: Medical Fusion
 Data filename: E:\2017_000_000\2017.013.xxx\2017.013.095 - Fusion Medical\01 CAD\06 Elec\COMcheck Page 1 of 7
 12.21.2017.cck



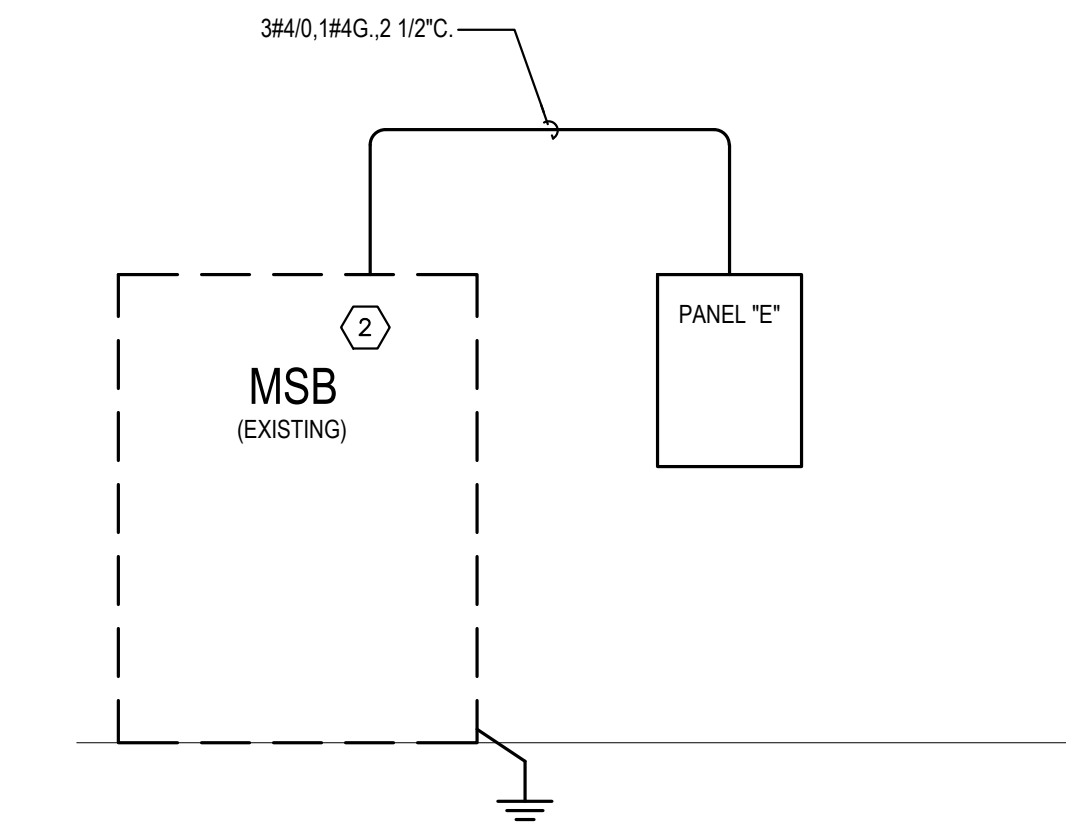
NOTES BY SYMBOL "E"

- PROVIDE CIRCUIT WITH 500V CURRENT LIMITER.
- PROVIDE A NEW 225/2 CIRCUIT BREAKER IN EXISTING MAIN PANEL TO SERVE PANEL "E".

01 POWER PLAN
 SCALE: 1/8" = 1'-0"



02 LIGHTING PLAN
 SCALE: 1/8" = 1'-0"



03 RISER DIAGRAM
 SCALE: NTS

PANELBOARD 'E' SCHEDULE											
SERVICES	LOAD				AMP S	CIRCUIT BREAKER	MOTOR	LOAD	SERVICES	AMP S	REMARKS
	CON	NON	CON	NON							
RTU-1		3536			50	1 2 30			DRYER		
VA-SHER	1000				20	5 6 20 1	180		STORAGE RECEP.TS		
STORAGE RECEP.TS			540		20	7 8 20 1	540		ROOM 103B RECEP.TS		
ROOM 103C RECEP.TS		540			20	9 10 20 1	540		ROOM 103D RECEP.TS		
ROOM 103G RECEP.TS			540		20	11 12 20 1	900		ROOM 103G RECEP.TS		
SINK RECEPTACLES	180				20	13 14 20 1	900		WAITING RM RECEP.TS		
ROOM 103E RECEP.TS		360			20	15 16 20 1	720		ROOM 103F RECEP.TS		
ROOM 103C LIGHTING	500				20	17 18 20 1	500		CENTRAL LIGHTING		
ROOM 103F LIGHTING		500			20	19 20 20 1			SPARE		
WH-1		1250			20	21 22 40	4150		WH-1		
					20	23 24 2					
SPARE					20	25 26 20 1			SPARE		
SPARE					20	27 28 20 1			SPARE		
SPARE					20	29 30 20 1			SPARE		
SPARE					20	31 32 20 1			SPARE		
NOT USED					-	33 34 - -			NOT USED		
NOT USED					-	35 36 - -			NOT USED		
NOT USED					-	37 38 - -			NOT USED		
NOT USED					-	39 40 - -			NOT USED		
NOT USED					-	41 42 - -			NOT USED		
	500	6506	500	6226			500	6520	0	7060	
VOLTAGE	AMPS		LOCATION		SECT	MTG	MAIN		AIC	REMARKS	
208/120 V, 1P, 4W	225		225		F		225/2		42K	GROUND BUS	
CONNECTED LOADS:		14026	13786		MINIMUM PANEL RATING IN VOLT AMPERES:		SEE RISER		SEE RISER		

LIGHTING FIXTURE SCHEDULE			
TYPE	DESCRIPTION	LAMPS	WATTS
E	LINE VOLTAGE TRACK LIGHT, 2110 LUMENS, 3500K CCT, 120V, 0-10V DIMMING, WHITE LEDRA BRUCK# 350430-21LM-35K-90-120-ELV-WH-ECO'WH	LED	18.5W
F	4' DIRECT/INDIRECT PENDANT MOUNT LED, FROSTED ACRYLIC LENS, 5400 LUMENS, 0-10V DIMMING, 3500K CCT, WHITE FINISH TEXAS FLUORESCENTS# 45P-SF-48L-UR18W036V-DV-35K-WH-HC301WH	LED	54W
J	UNDERCABINET LED, LENGTH DETERMINED BY CONTRACTOR, 220 LUMENS PER FOOT, 3500K CCT, 120V, WHITE FINISH LEDRA BRUCK# 138840-LENGTH-35K-95-120-WH	LED	6.7W/FT
K	CLEAR GLASS PENDANT LED, WEST ELM LIGHTING# SCULPTUREAL GLASS GEO PENDANT - LARGE (CLEAR)	LED	9W
L	SMOKE SHADE GLASS PENDANT LED, WEST ELM LIGHTING# SCULPTUREAL GLASS PENDANT, SMALL PEBBLE, SMOKE SHADE, BRASS CANOPY	LED	9W
M	DUSTY BLUSH GLASS PENDANT LED, WEST ELM LIGHTING# SCULPTUREAL GLASS GEO PENDANT - MEDIUM WITH DUSTY BLUSH COLOR	LED	9W

No.	Date	Revision

CP
 Drawn
 MA
 Approved

ELECTRICAL FLOOR PLANS

Project No. 17211.00
 Date 01.15.2018

