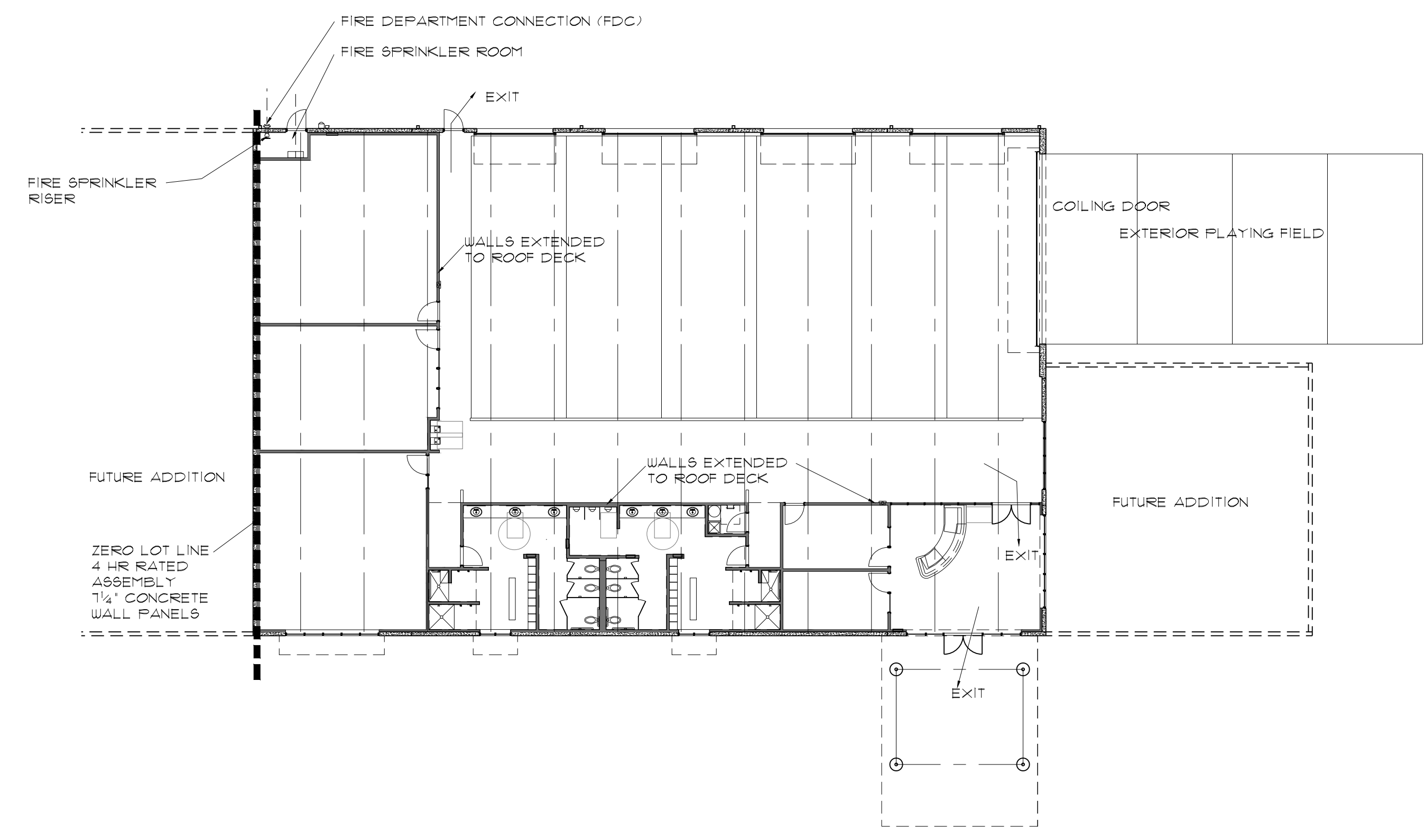


1 SITE PLAN - CODE ANALYSIS
SCALE: 1" = 30'-0"

PARKING:
58 PARKING SPACES PROVIDED
3 HANDICAP PARKING SPACES PROVIDED



2 FLOOR PLAN - CODE ANALYSIS
SCALE: 1/16" = 1'-0"
THIS BUILDING SHALL HAVE AN APPROVED FIRE SPRINKLER SYSTEM

D1 FITNESS CENTER										
BUILDING CODES										
2015 IBC	INTERNATIONAL BUILDING CODE							TABLE 601	TYPE II-B CONSTRUCTION TYPE	
2015 IECC	INTERNATIONAL ENERGY CONSERVATION CODE							STRUCTURAL FRAME	0 HR	
2015 IPC	INTERNATIONAL PLUMBING CODE							BEARING WALLS EXTERIOR	0 HR	
2015 IMC	INTERNATIONAL MECHANICAL CODE							INTERIOR	0 HR	
2017 NEC	NATIONAL ELECTRICAL CODE							FLOOR CONSTRUCTION	0 HR	
2015 IFC	INTERNATIONAL FIRE CODE							ROOF CONSTRUCTION	0 HR	
TEXAS ACCESSIBILITY STANDARDS (ADA)										
100% FIRE SPRINKLER SYSTEM										
TABLE 602 TYPE II B										
WEST BUILDING LINE ON WEST PROPERTY LINE								4 HR FR WALL ASSEMBLY		
Building Areas										
D1 FITNESS CENTER		10,000 SF								
OCCUPANCY										
OCCUPANT LOAD:		FITNESS CENTER	A-3	10,000 SF	200.00	OCCUPANTS	50	SF / OCCUPANT		
TOTAL OCCUPANCY				10,000 SF	200.00	OCCUPANTS				
ALLOWABLE AREA										
TYPE II B										
TABLE 503										
BUILDING TYPE										
A-3 OCCUPANCY				10,000 SF BLD AREA	9,500 SF	ALLOWABLE				
				FIRE SPRINKLER SYS INCREASE	200%	AREA - OK				
					19,000 SF					

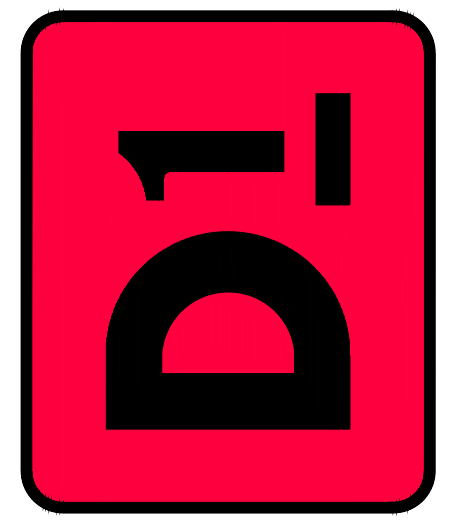
SA
STUCKEY ARCHITECTS
ARCHITECTURE PLANNING INTERIORS
208 N. MAIN STREET, SUITE 140
WEATHERFORD, TEXAS 76086
TELEPHONE: (817) 341-0754
FAX: (817) 341-0755
EMAIL: rst@stuckeyarchitects.com



FEBRUARY 9, 2018
ROBERT A. STUCKEY
ARCHITECT, TEXAS #3093

D1 FITNESS CENTER
THE GROVES OF ALEDO

ALEDO, TEXAS



CODE ANALYSIS

REVISIONS

DRAWN BY: RAS PROJ. MGR.: RAS
DATE: FEBRUARY 9, 2018 PROJ. NO.:

SHEET NO.

G1.1

SHEET
02 OF 35