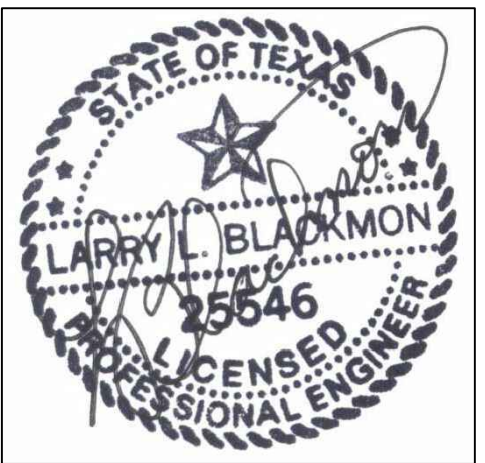




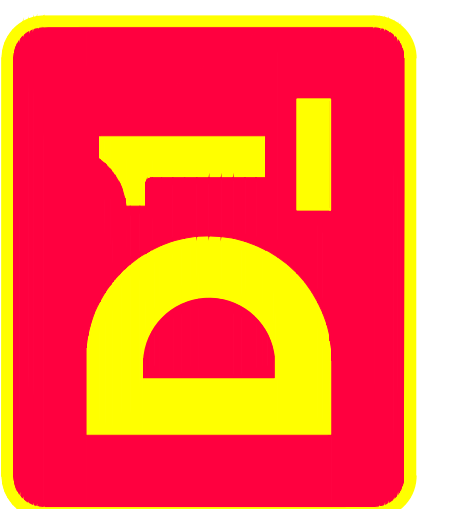
STUCKEY ARCHITECTS
 ARCHITECTURE PLANNING INTERIORS
 208 N. MAIN STREET, SUITE 140
 WEATHERFORD, TEXAS 76086
 TELEPHONE (817) 341-0754
 FAX - (817) 341-0755
 EMAIL: rustuckey@stuckeyarchitects.com



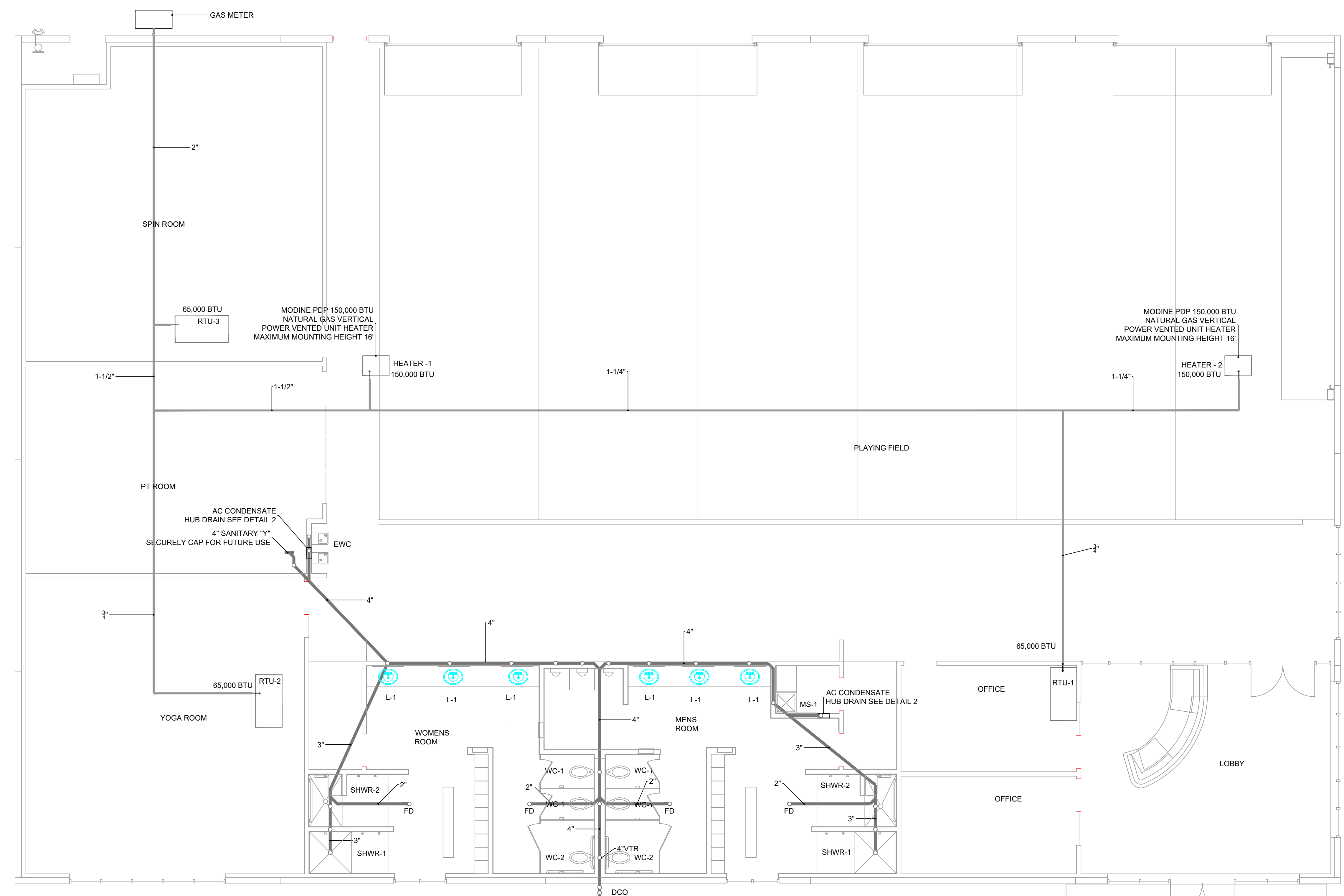
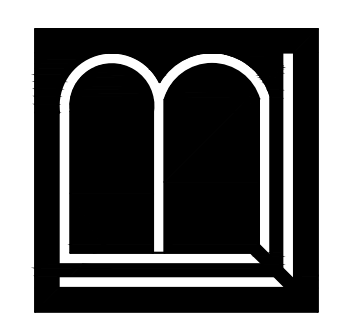
2/8/2018

D1 FITNESS CENTER
 THE GROVES OF ALEDO

ALEDO, TEXAS

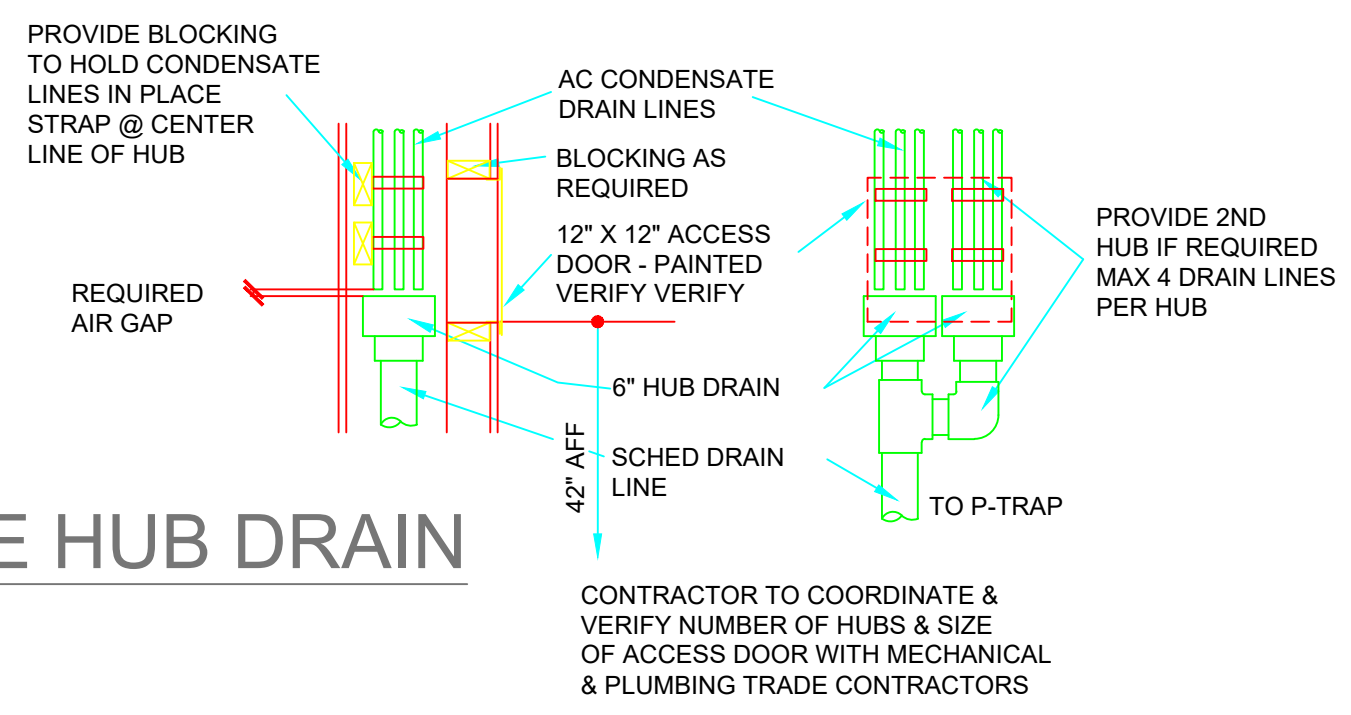


LARRY L. BLACKMON INC.
 ENGINEERING & BUILDING DESIGN
 6716 AZLE AVENUE
 FORT WORTH, TEXAS 76135
 REGISTRATION #: F-002382
 EMAIL: larry@blackmonconsultingengineers.com
 PHONE: 817-238-9801 FAX: 817-238-8804



1 SEWER/GAS PLAN
 SCALE: 3/16"=1'-0"

2 AC CONDENSATE HUB DRAIN
 SCALE: NTS



PLUMBING FIXTURES	
EW-1	80 GALLON ELECTRIC WATER HEATER MODEL MUST MEET EFFICIENCY REQUIREMENTS AND CONTAIN THERMOSTATIC TEMP. CONTROL. OR APPROVED EQUAL.
WC-1	AMERICAN STANDARD WHITE ELONGATED BOWL 3043.102, 111XL SLOAN REGAL FLUSH VALVE; 1955C BEMIS WHITE SEAT, 1.28 GPF. OR APPROVED EQUAL.
WC-2	AMERICAN STANDARD WHITE ELONGATED BOWL 3043.102, 111XL SLOAN REGAL FLUSH VALVE; 1955C BEMIS WHITE SEAT, 1.28 GPF HANDICAP APPROVED, OR APPROVED EQUAL.
L-1	AMERICAN STANDARD CADET OVAL COUNTERTOP LAVATORY 21"X17-5/8" OVAL, WHITE WELKAY FAUCET, HANDICAP PROTECTION, OR APPROVED EQUAL.
SHWR-1	AMERICAN STANDARD SINGLE CONTROL TRANSITIONAL SHOWER ONLY. #9026.501.295, #9026.501.002. OR APPROVED EQUAL.
SHWR-2	AMERICAN STANDARD ESTATE SHOWER TRIM KIT. ADA COMPLIANT. OR APPROVED EQUAL.
EWC	ELKAY TWO STATION WALL MOUNT WATER COOLER WITH 1-1/2" MCGUIRE P-TRAP, 175 LK STOP. OR APPROVED EQUAL.
MS-1	FIAT MSB-2424, 24" X 24" X 10" HIGH, MOLDED STONE W/WALL GUARDS, MOP SINK 830-AA SERVICE FAUCET W/ VAC. BREAK, 832-AA HOSE & HOSE BRACKET, 889-CC MOP HANGER, E77-AA VINYL BUMPER. OR APPROVED EQUAL.
U-1	AMERICAN STANDARD WASHBROOK URINAL FLUSH VALVE SLOAN ROYAL (TOP SPUD) OR APPROVED EQUAL.

GAS DEMAND	
RTU'S	@ 195,000 BTU
HEATERS	@ 300,000 BTU
TOTAL REQ'D	= 495,000 BTU

PLUMBING SYMBOL LEGEND	
	GREASE LINE
	GAS LINE

NOTE TO CONTRACTORS
 THE INTENT OF THE DRAWINGS HEREIN IS TO REPRESENT A COMPLETE WORKING SYSTEM PER ALL CODES. ALL CONTRACTORS SHALL BE RESPONSIBLE FOR PROVIDING AND INSTALLING ALL COMPONENTS NECESSARY TO PROVIDE A COMPLETE WORKING SYSTEM PER ALL CODES. WHETHER SHOWN OR NOT SHOWN ON THE DRAWINGS

SEWER/GAS PLAN

REVISIONS

DATE:	PROJ. NO.:

DRAWN BY:	PROJ. MGR.:
DLP	LLB

SHEET NO.

P1.1

SHEET OF